



Cleaver Street, SE11

£550,000



- Two Bedrooms
- Eat In Kitchen
- Lots of Light
- Duplex Apartment
- Great Views
- Communal Gardens



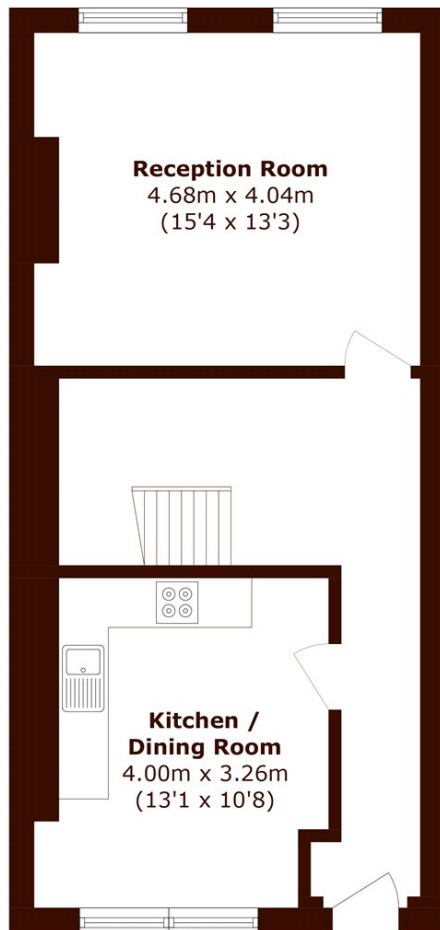


ABOUT THE PROPERTY

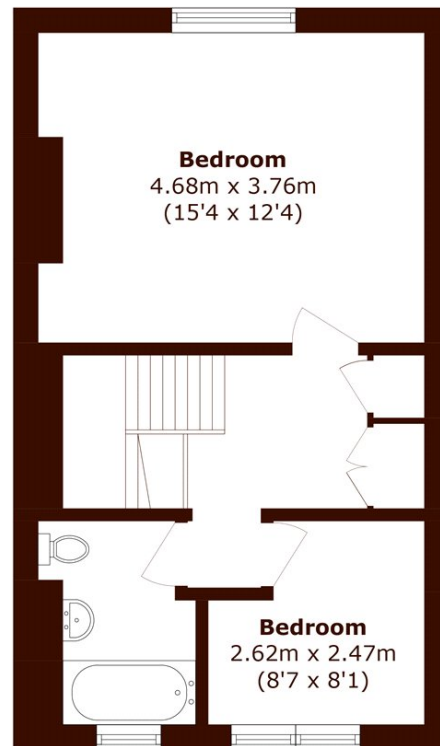
A beautifully presented duplex apartment, arranged over the upper floors of this period building in the heart of Kennington. With fantastic proportions and lots of natural light this split level, two bedroom property comprises a spacious reception and separate eat-in kitchen. Upstairs to the front of the flat is the main double bedroom which enjoys views of the city's skyline. Bedroom two makes for an ideal home office/study.

Situated a stone's throw from the prestigious Cleaver Square, and an array of local pubs, shops and restaurants, as well as the green open spaces of Kennington Park and Oval Cricket Ground. Transport links are excellent with the Northern Line at Kennington just a short walk away and the Victoria Line, and overground services into Waterloo in one direction and Clapham Junction in the other, at Vauxhall. There are also frequent buses servicing local areas.





Third Floor



Fourth Floor

Total area (approx.): 88.9 sq. m (956.9 sq. ft)

Marsh & Parsons Kennington

295 Kennington Road,
London, SE11 4QE
020 7587 1533