



Eythorne Road, SW9

£575,000

2 2 1 B

- Two Bedrooms
- Two Bathrooms
- First Floor
- Balcony
- Modern Development
- Lots Of Light





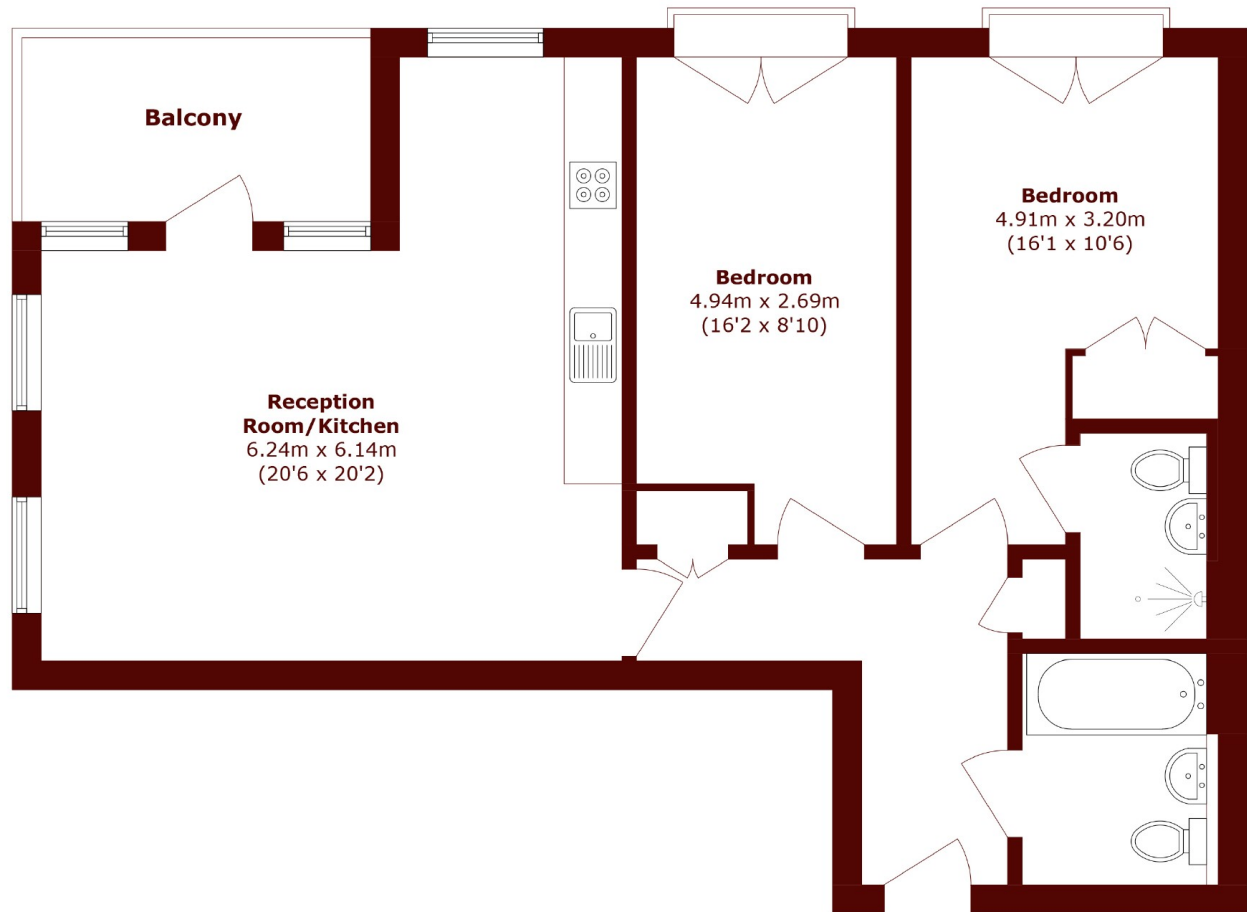
ABOUT THE PROPERTY

A bright and spacious two bedroom, two bathroom apartment set within the popular Oval Quarter development.

Featuring a large open-plan reception with floor-to-ceiling windows and a private balcony, modern kitchen with integrated appliances, and an en suite master bedroom

Just a short walk from Myatt's Field Park, this charming property offers the perfect mix of green space and city convenience. Enjoy the playground, sports facilities and vibrant summer events right on your doorstep. Located on Bramah Road, you're superbly connected to Brixton (Victoria line), Oval (Northern line), Loughborough Junction (Thameslink), and Stockwell (Northern & Victoria lines), making commuting across London effortless.





Total area (approx.): 77.1 sq. m (829.0 sq. ft)
Balcony area (approx.): 7.4 sq. m (79.6 sq. ft)

Marsh & Parsons Kennington

295 Kennington Road,
London, SE11 4QE
020 7587 1533