



St. Lawrence Way, SW9

£675,000



- Freehold
- Garden
- Quiet Location
- Four Bedrooms
- Eat-In Kitchen
- Off-Street Parking



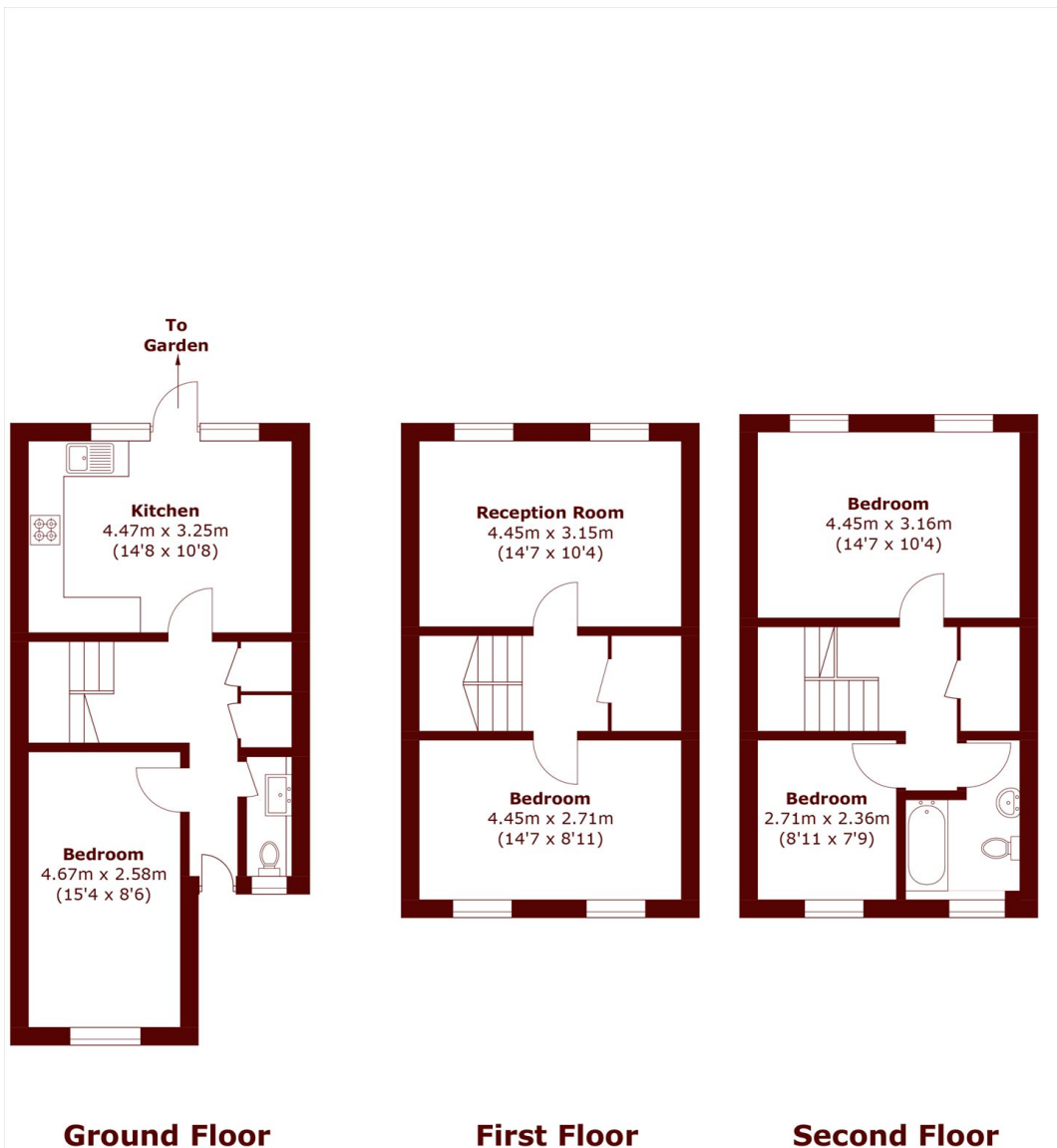


ABOUT THE PROPERTY

A bright four bedroom family home, with a spacious eat-in kitchen, and separate reception room, offering ideal family living and entertaining space - with generous proportions and presented in good condition.

Located on St. Lawrence Way, a short walk from the beautiful Myatt's Fields Park, and within easy reach of local shops, bars and restaurants. Nearby transport links include Brixton and Oval stations, Loughborough Junction and Stockwell.





Total area (approx.): 109.6 sq. m (1,179.6 sq. ft)

Marsh & Parsons Kennington

295 Kennington Road,
London, SE11 4QE
020 7587 1533