



## South Lambeth Road, SW8

£550,000



- Two Bedrooms
- Period Conversion

- Second Floor
- Modern Kitchen and Bathroom

- Excellent Transport
- Close To Amenities









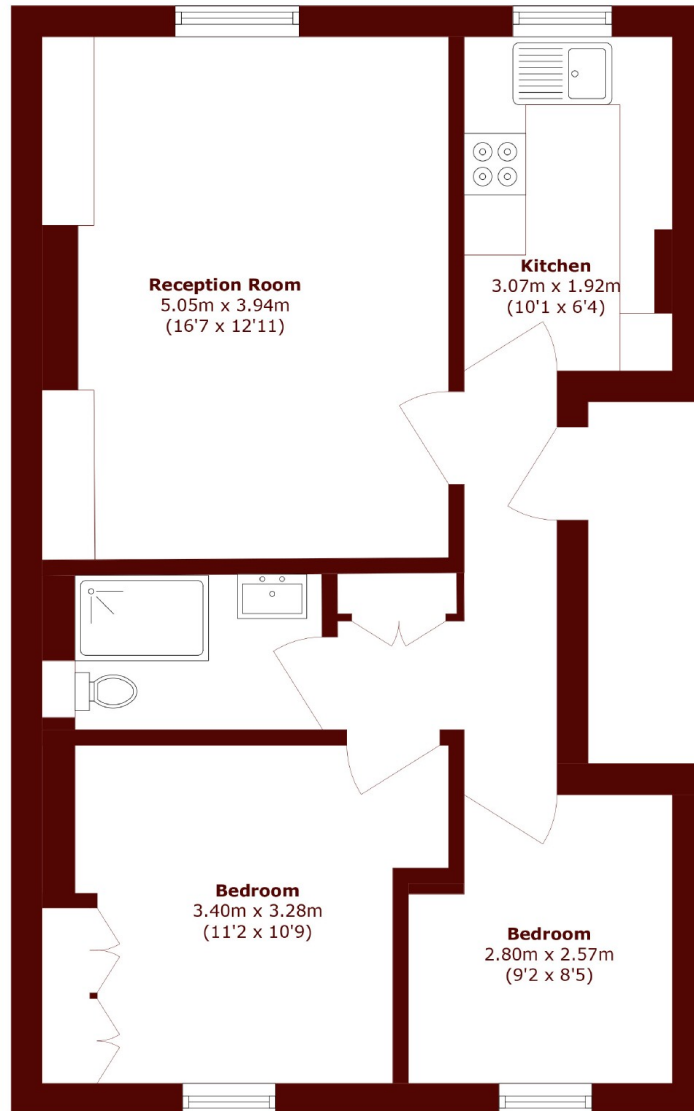
## ABOUT THE PROPERTY

A beautifully presented two-bedroom period flat set on the second floor of a handsome conversion on South Lambeth Road. The property is in really good condition throughout, combining charming period features with modern finishes.

The flat comprises a bright reception room, a well-fitted kitchen, two comfortable bedrooms, and a stylish bathroom. High ceilings and large sash windows fill the space with natural light, creating an airy and welcoming feel.

South Lambeth Road offers excellent transport links with Vauxhall, Stockwell and Oval stations all within easy reach, alongside a wide range of local shops, cafés, and amenities. The open green space of Vauxhall Park and the Thames are also nearby.





Total area (approx.): 57.4 sq. m (617.8 sq. ft)

## Marsh & Parsons Kennington

295 Kennington Road,  
London, SE11 4QE  
020 7587 1533