



## South Lambeth Road, SW8

£600,000



- Two Double Bedrooms
- Two En-suites

- Open Plan Kitchen/Living
- Excellent Transport

- Ample Storage
- Good Condition





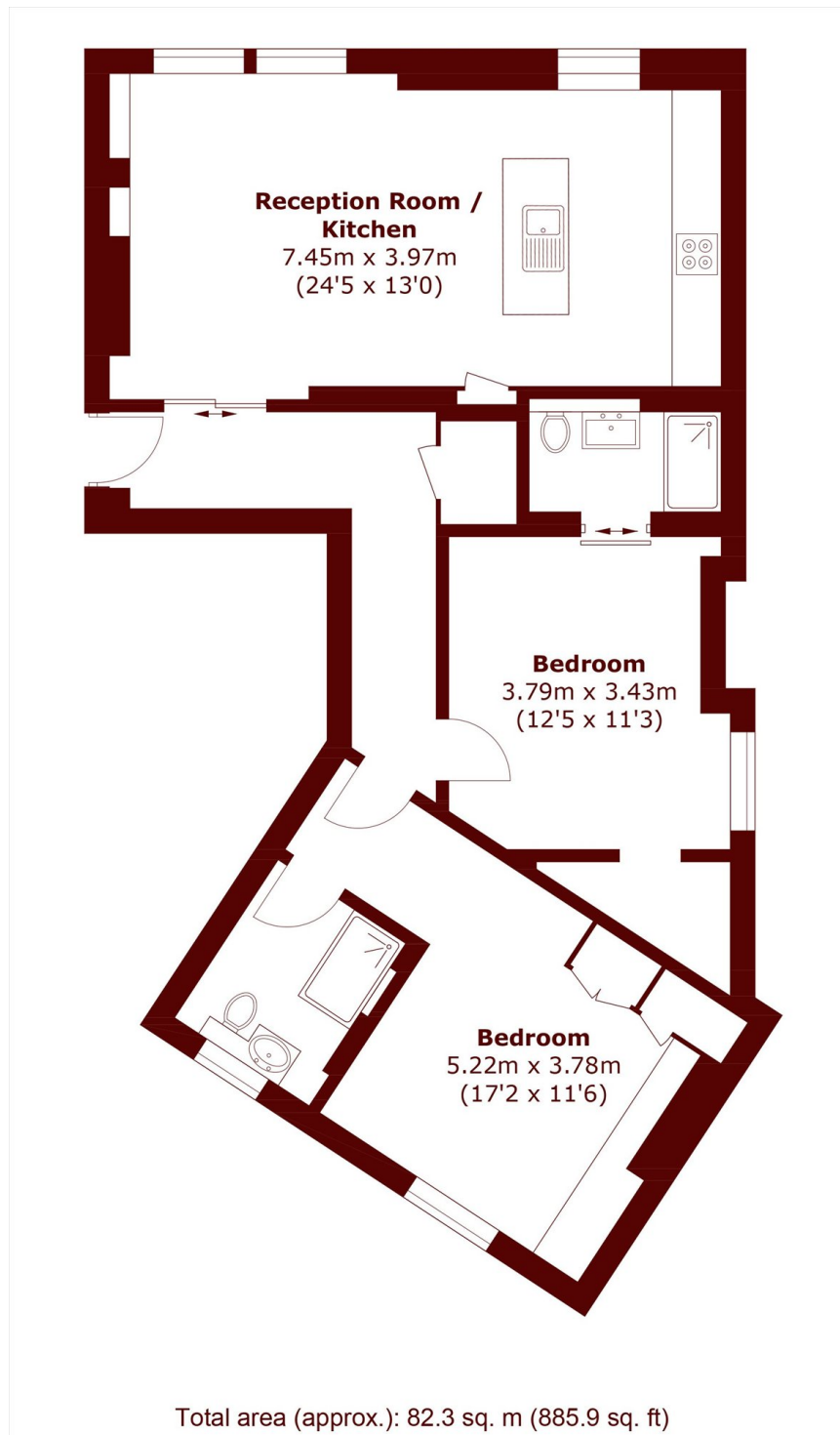


## ABOUT THE PROPERTY

Situated on the third floor of the sought-after Victoria Mansions, this beautifully presented two bedroom, two bathroom apartment offers stylish living in the heart of South Lambeth. Immaculately maintained and flooded with natural light, the flat boasts panoramic west-facing viewings across the city skyline, creating a truly captivating outlook - perfect for evening sunsets.

Set within a secure, well-maintained development, this flat combines comfort with convenience. Vauxhall Station with National Rail, London Underground along with buses and Stockwell tube station are all within easy walking distance, offering excellent transport links across London.





## Marsh & Parsons Kennington

295 Kennington Road,  
London, SE11 4QE  
020 7587 1533