



Boundary Lane, SE17

£400,000



- South Facing Terrace
- Excellent Condition
- Chain Free
- Modern Block
- Communal Courtyard
- Bike Storage



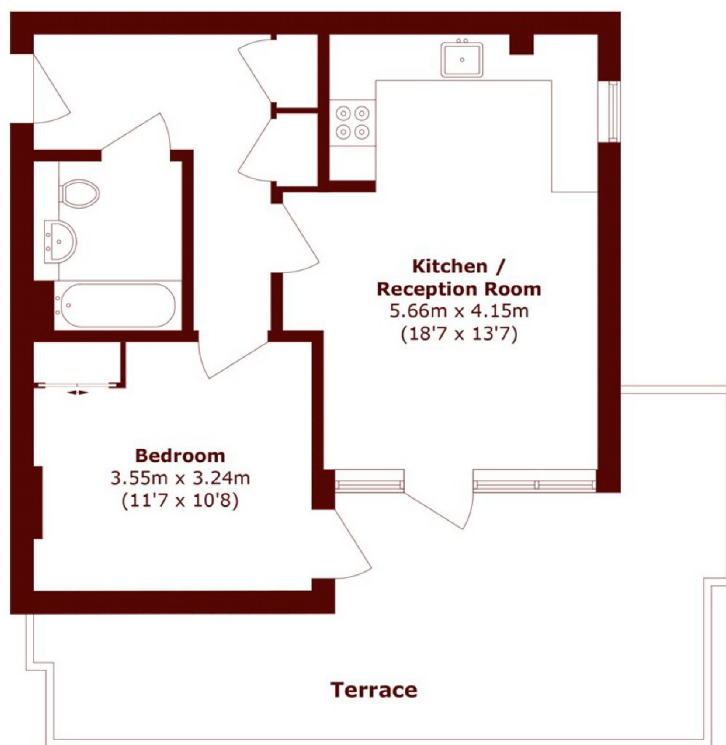


ABOUT THE PROPERTY

A beautifully presented one bedroom apartment, with a large south facing roof terrace, set on the third floor of this modern block. Offering spacious accommodation and lots of natural light. The property is offered on a chain free basis.

Located moment from Burgess Park. Nearby transport links include Elephant & Castle, providing access to the Northern and Bakerloo line, and Thameslink overground. There are numerous bus links to the City with Oval and Kennington underground stations nearby.





Total area (approx.): 47.6 sq. m (512.4 sq. ft)

Terrace area (approx.): 23.7 sq. m (255.1 sq. ft)

Marsh & Parsons Marsh & Parsons

295 Kennington Road,
London, SE11 4QE
020 7587 1533

We aim to make our particulars both accurate and reliable. However, they are not guaranteed; nor do they form part of an offer or contract. If you require clarification on any points then please contact us, especially if you're traveling some distance to view. Please note that appliances and heating systems have not been tested and therefore no warranties can be given as to their good working order.