



Plot 4 The Picket Mead Development Murton Lane

Newton, SA3 4TR

Price £1,100,000

PLOT FOUR

A small, carefully crafted development of contemporary detached homes, offering generous accommodation, refined design and modern living in a private setting.

- 1 Natural slate
- 2 Standing seam metal cladding
- 3 Self coloured render
- 4 Cedar cladding
- 5 Vertical slate hanging
- 6 Eternite Equitone cladding
- 7 Colour coated aluminium windows
- 8 Colour coated aluminium sectional garage door



FRONT ELEVATION



SIDE ELEVATION

- Exclusive development of just a handful of contemporary detached homes
- Generous accommodation extending to 2,841sqft

- Architect-designed with strong emphasis on light, space and modern living
- High-quality construction with a 10-year new home warranty



REAR ELEVATION

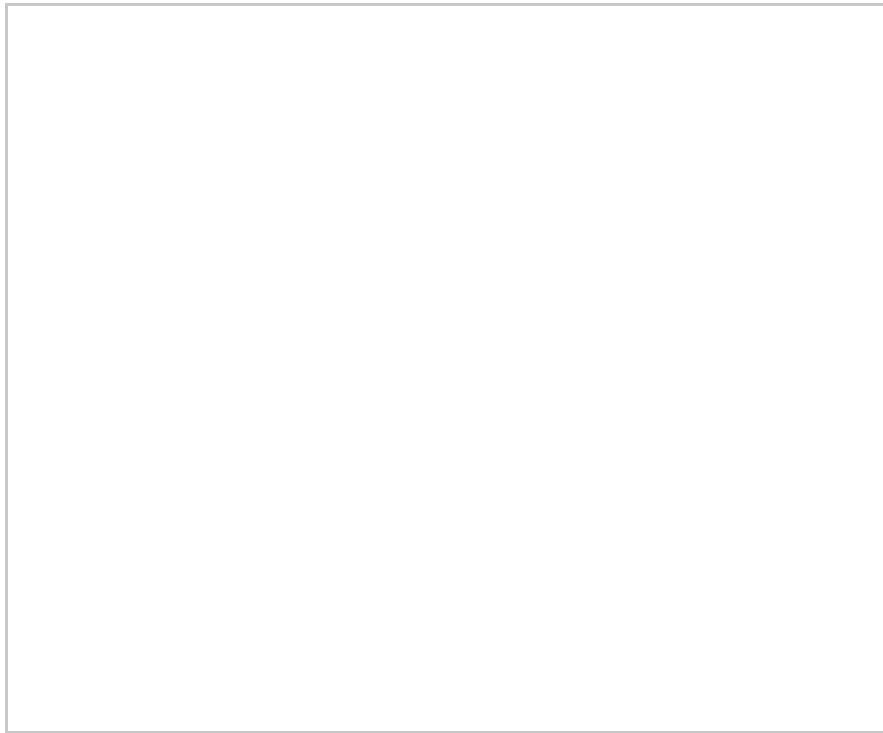
Viewing

Please contact our The Greenroom Office on 01792 986 099

if you wish to arrange a viewing appointment for this property or require further information.



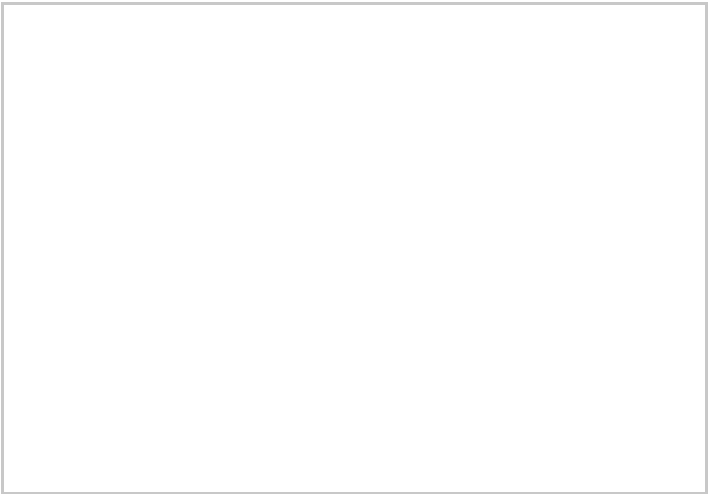
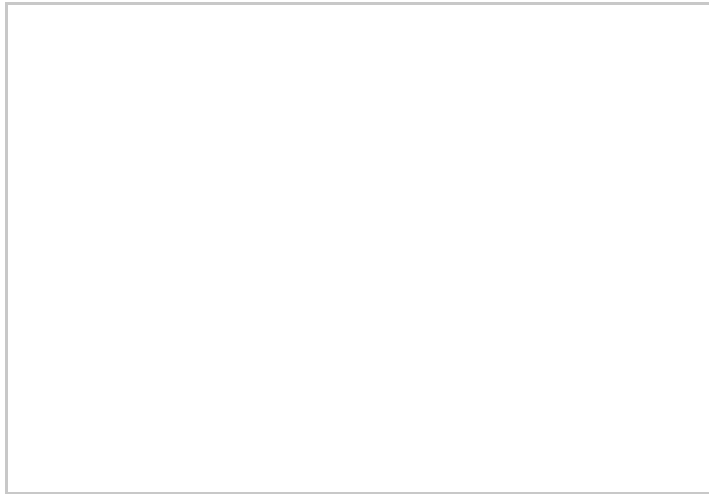
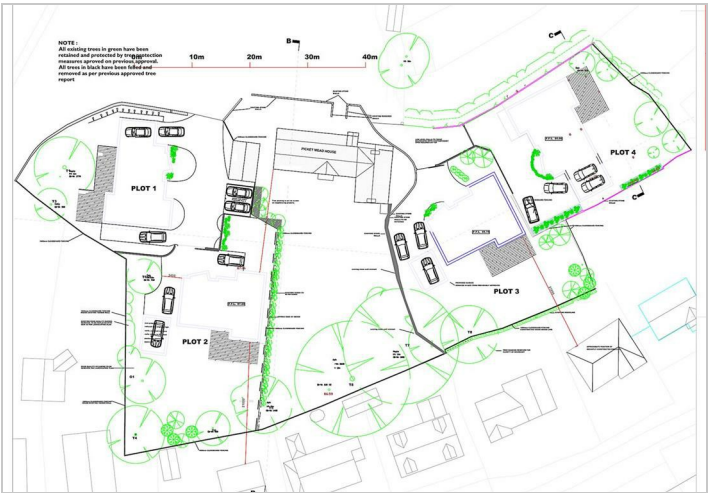
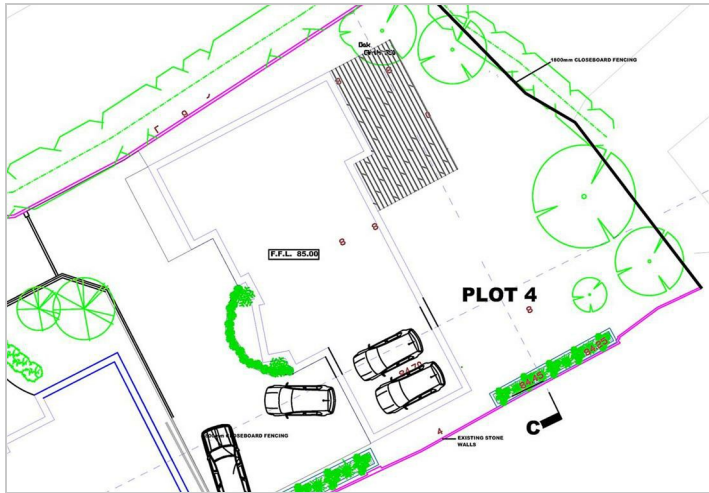
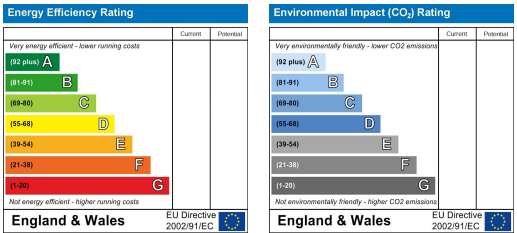
Floor Plan



Area Map



Energy Efficiency Graph



These particulars, whilst believed to be accurate are set out as a general outline only for guidance and do not constitute any part of an offer or contract. Intending purchasers should not rely on them as statements of representation of fact, but must satisfy themselves by inspection or otherwise as to their accuracy. No person in this firms employment has the authority to make or give any representation or warranty in respect of the property.