

## Meadow House, Middleton, Rhossili, Gower, SA3 1PJ





Experience coastal charm and countryside serenity at Meadow House, a beautifully maintained five-bedroom detached home in Middleton, Rhossili.

Just moments from the tranquil and unspoilt sands of Mewslade Bay, this inviting property features bright, spacious interiors and enchanting gardens with diverse spots to relax and unwind.

Complete with a private studio annexe overlooking the surrounding countryside which sits above the garage. Meadow House offers a lifestyle that's both idyllic and versatile in the heart of Gower Area of Outstanding Natural Beauty.

The property is offered with No Chain.



£595,000 FREEHOLD









### Idyllic Coastal Living at Meadow House, Middleton

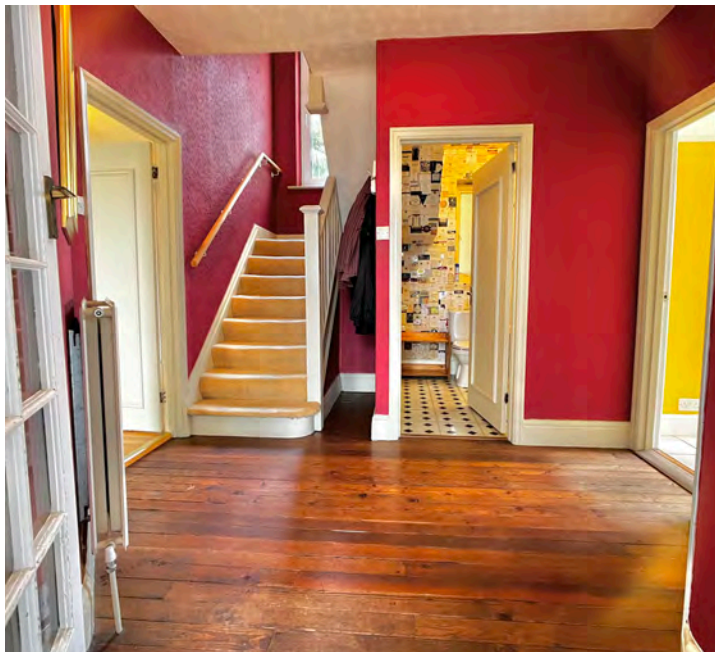
Nestled in the heart of Rhossili's picturesque Middleton, Meadow House is a charming five-bedroom detached residence, perfectly positioned just a short stroll from the breathtaking Mewslade Bay. This home blends the beauty of traditional style with contemporary comfort, offering an ideal retreat for those seeking coastal and countryside charm.

Inside, the home is beautifully maintained, with generous windows in every room inviting streams of natural light and offering captivating views of the surrounding landscapes. The layout boasts five well-proportioned bedrooms, two stylish bathrooms, and a convenient downstairs WC. Three inviting reception rooms provide versatile living spaces, complemented by a modern kitchen and practical utility room.

The gardens are a true highlight—a labor of love by the current owner. Immaculately designed and teeming with an array of flourishing plants, the grounds offer various inviting nooks to unwind, enjoy a stroll, or simply immerse yourself in nature. Two greenhouses and a spacious shed/workshop add to the allure, perfect for gardening enthusiasts or hobbyists.

For added versatility, a self-contained studio annexe sits above the garage, offering a spacious living/bedroom area and shower room with stunning views over the neighboring fields—a perfect guest retreat or private workspace.

Meadow House is not just a home; it's a lifestyle, where coastal elegance meets serene countryside charm.





























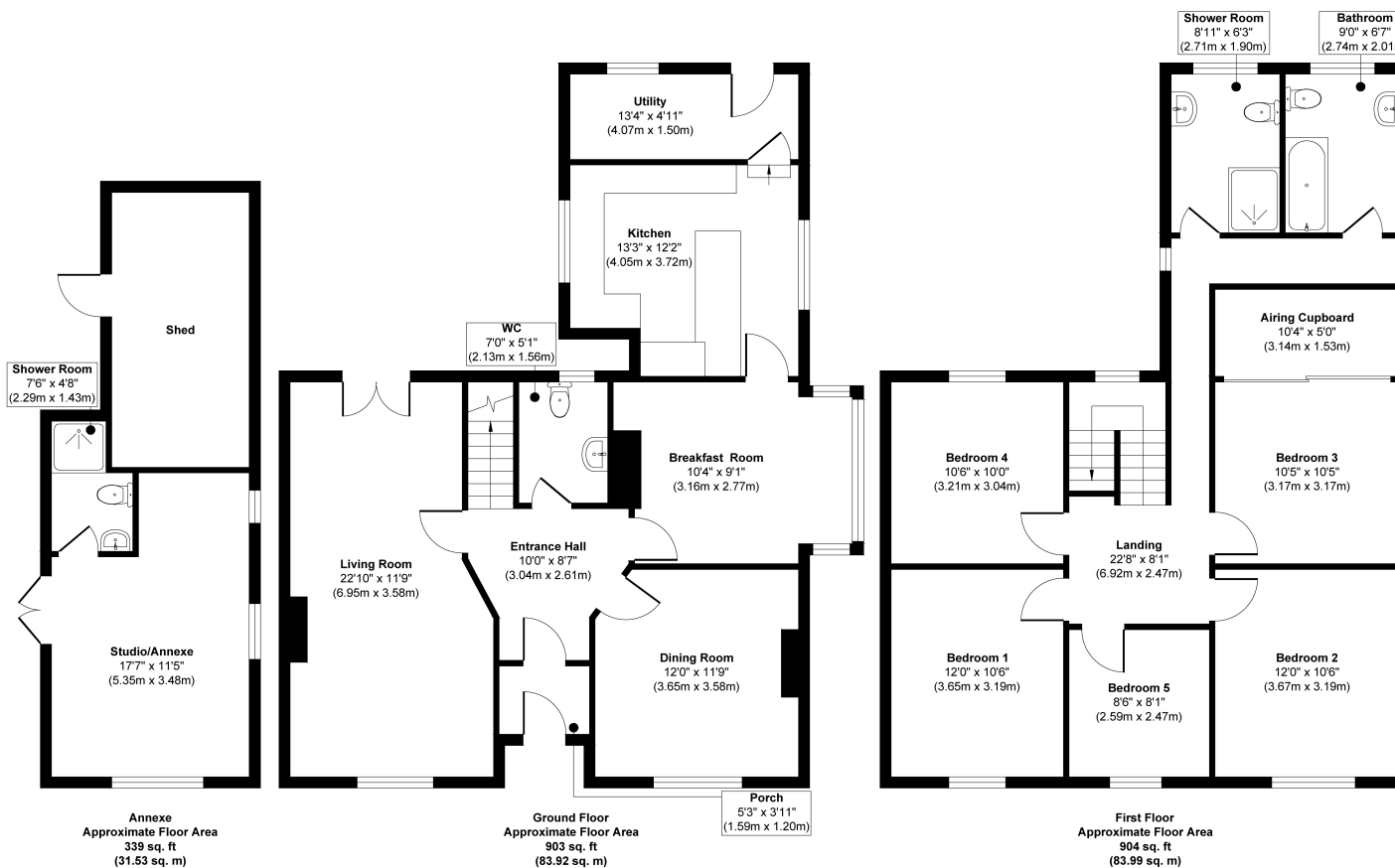


The property is FREEHOLD

Mains services are connected to the property for electricity, water and sewerage and the central heating is oil fired. The property also benefits from solar panels which are currently paid 74.4 pence per kilowatt/hour generated (approx £2,300p.a.).

The council tax band is G (£3,364p.a.)

The EPC rating is E



**Approx. Gross Internal Floor Area 2146 sq. ft / 199.44 sq. m (Including Annexe)**

Illustration for identification purposes only, measurements are approximate, not to scale.

Produced by Elements Property



Living in Middleton, Rhossili offers an exceptional lifestyle blending coastal beauty with a peaceful village atmosphere. Here's what makes it so appealing:

#### 1. Gower Peninsula and Beaches

Middleton is on the stunning Gower Peninsula, the UK's first Area of Outstanding Natural Beauty. This area is renowned for its breathtaking beaches, including nearby Mewslade Bay and Rhossili Beach, frequently voted among the best in Europe with sweeping sands and dramatic cliffs. Llangennith, a surfing hotspot, is just a short drive away.

#### 2. Social and Shopping Amenities

While Middleton and Rhossili are known for their tranquility, they offer convenient amenities such as local cafes, the Worm's Head Hotel with sea views, and charming pubs and eateries scattered throughout nearby villages. The larger village of Mumbles, only about 30 minutes by car, provides an array of boutique shops, galleries, and a vibrant dining scene, perfect for days out or weekend shopping.

#### 3. Commuting and Transport Links

Middleton is approximately 15 miles from Swansea city center, making for a straightforward commute of about 30-40 minutes by car. Swansea offers a mainline train station with services to Cardiff, Bristol, and London, plus easy access to the M4 motorway, which connects to Cardiff (about an hour's drive) and further east to London.

#### 4. School Catchments

Middleton falls within the catchment for Bishopston Comprehensive School, one of the top-rated secondary schools in the Swansea area. Primary education is also well-regarded locally, with Knelston Primary School nearby and additional options in surrounding villages. For private education, Ffynone House School in Swansea offers an excellent independent option.

With natural beauty, easy access to Swansea, and excellent local schools, Middleton, Rhossili is ideal for those seeking a scenic yet accessible lifestyle on the Gower Peninsula.





THE  
GREENROOM  
ESTATES & PROPERTY

01792 986099

info@thegreenroomhomes.com

www.thegreenroomhomes.com



Whilst every effort has been made to ensure these details are accurate, they are for illustrative purposes only and should be read as a guide and not relied upon. Internal floorplans may be subject to alteration. Dimensions listed are maximum and approximate. computer generated images are for illustrative purposes only.



Zoopla.co.uk rightmove 