

49 Woodville Road Mumbles, Swansea, SA3 4AE



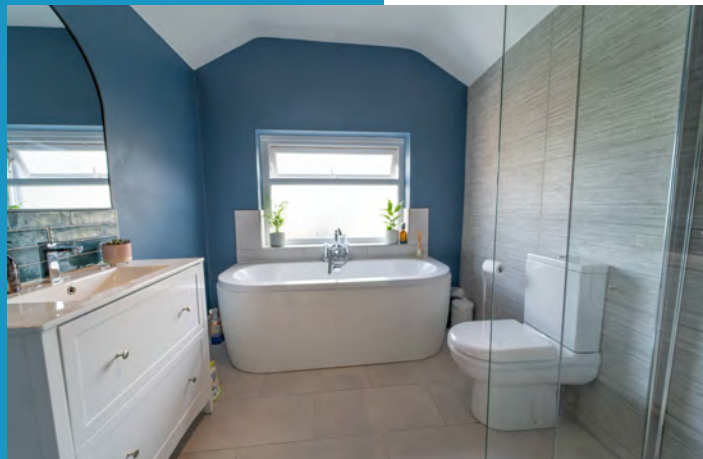
Nestled in the heart of
Mumbles, 49 Woodville Road
seamlessly blends cottage
charm with contemporary flair.

Step inside and discover
light-filled living spaces,
modern finishes, and
breathtaking views across
Swansea Bay—a truly
captivating retreat moments
from the village's vibrant
shops, cafés, and seafront.



£399,995 FREEHOLD





Nestled in the very heart of Mumbles, 49 Woodville Road is a most attractive cottage, immaculately presented and brimming with character. From the moment you step through the front door, a beautifully tiled hallway and impressively high ceilings set a welcoming tone for the rest of the home.

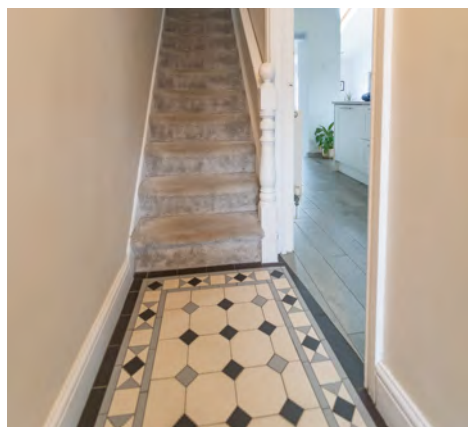
To the front, a square and elegant reception room boasts built-in shelving either side of the chimney breast, providing both a stylish focal point and practical storage. At the core of this delightful property lies a contemporary kitchen, seamlessly connecting to the family room via a short flight of steps. Bathed in natural light and showcasing a striking vaulted ceiling, this generous space also enjoys direct access to the rear garden through French doors. A useful utility room is cleverly positioned off the family room, ensuring day-to-day tasks are neatly tucked away.

The rear garden is a rare find in Mumbles—a particularly good size for the village. It features a sun terrace ideal for al fresco dining, a neat lawn beyond, and the added convenience of pedestrian access from the rear.

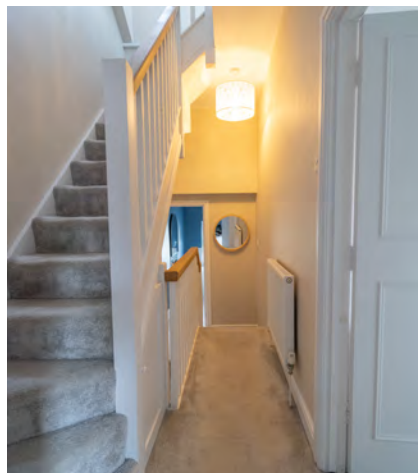
Ascending to the first floor, you will find two inviting double bedrooms and a luxurious family bathroom, while the second floor is dedicated to a fabulous master suite. Complete with built-in wardrobes and a large window fitted with a Juliet balcony, this elevated retreat presents a sweeping panoramic vista over Swansea Bay—a truly enviable outlook.

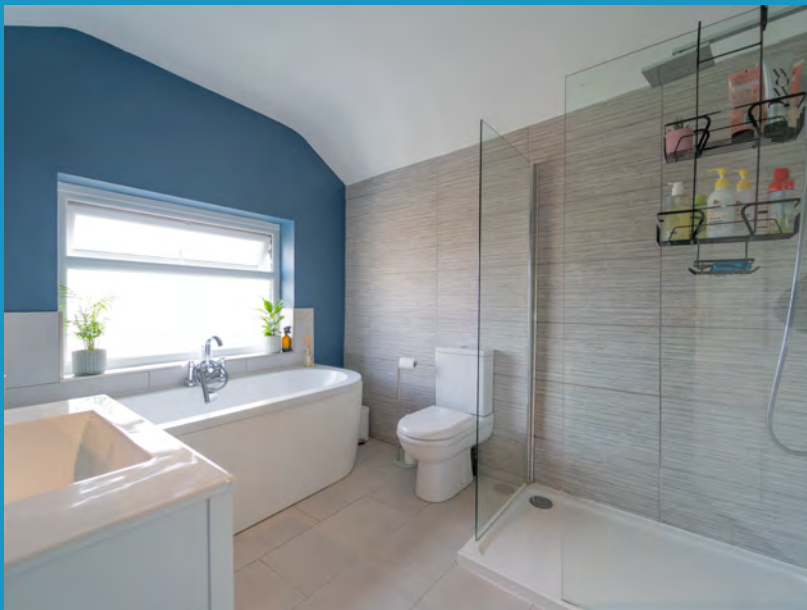
Presented in impeccable condition throughout, this charming cottage offers superb living space for a growing family or those wishing to downsize, all while being within a short stroll of Mumbles' vibrant shops, cafés, and other amenities. A marvellous opportunity to acquire a home of genuine quality in one of the village's most sought-after locations.















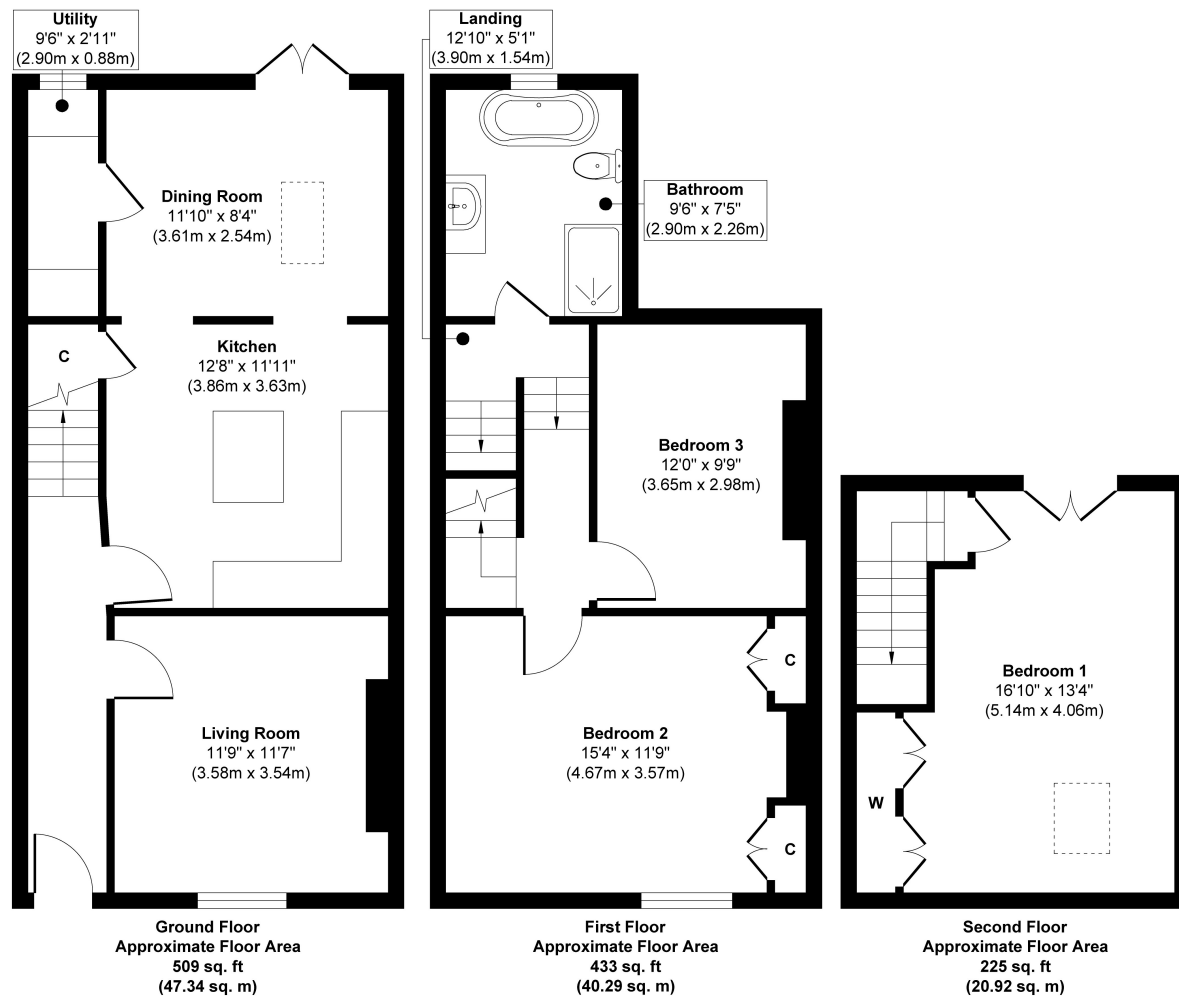
The property is FREEHOLD

The property is connected to all mains services and the central heating is fired by gas.

The Council tax is Band E (£2,467.a.)

The EPC rating is D

49 Woodville Road, Mumbles



Approx. Gross Internal Floor Area 1167 sq. ft / 108.55 sq. m

Illustration for identification purposes only, measurements are approximate, not to scale.

Produced by Elements Property

Woodville Road places you right at the heart of Mumbles' vibrant village lifestyle, where everyday conveniences and indulgent treats await at every turn.

Stroll down to Oysterwharf to enjoy waterfront dining, pick up a specialty coffee from Microlot, or stop by Boo's for a sweet treat—all just moments from your doorstep.

The location also offers swift access to key destinations such as Singleton Hospital, Swansea University, and the city centre, with the M4 corridor only a short drive away, ensuring a seamless commute for work or leisure.

Beyond the village streets, you'll find the scenic Mumbles Nature Reserve and the famed shoreline of Langland and Rotherlode Bays, perfect for coastal walks, paddleboarding, or simply soaking up the sea air.

Just a little further afield lies the expansive Gower Peninsula, home to breathtaking beaches and rolling countryside, as well as beautiful Clyne Gardens for a tranquil afternoon out.

Families will appreciate the excellent local school catchments, offering top-notch education within easy reach.

Whether you're looking for the buzz of village living, coastal adventures, or the comforts of a well-connected base, Woodville Road in Mumbles truly has it all.

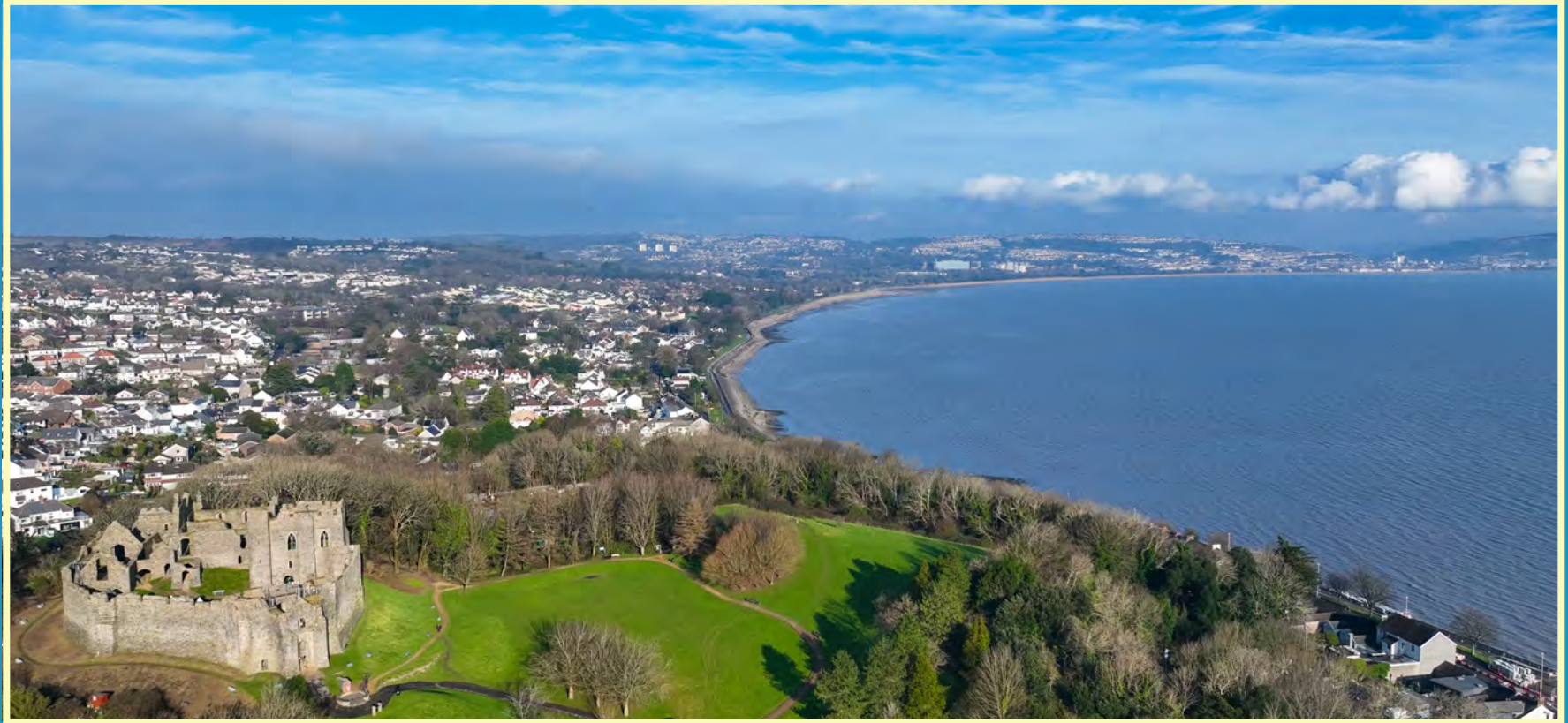


THE GREENROOM

GIVE YOUR HOME THE ATTENTION IT DESERVES...

01792 986099

info@thegreenroomhomes.com



Whilst every effort has been made to ensure these details are accurate, they are for illustrative purposes only and should be read as a guide and not relied upon. Internal floorplans may be subject to alteration. Dimensions listed are maximum and approximate. computer generated images are for illustrative purposes only.

