

12 Parkside Apartments, 16 Langland Road Mumbles, SA3 4LX



## Stylish Apartment with Park Views in Mumbles

This charming two-bedroom apartment in Parkside Apartments offers a spacious living room with patio doors leading to a west-facing balcony overlooking Underhill Park.

Complete with a modern kitchen, bathroom, and off-street parking, it's perfectly located between the boutiques of Mumbles village and the stunning beaches of Langland and Rotherslade Bay.

Ideal for relaxed coastal living!



£225,000 FREEHOLD



This lovely two-bedroom top floor apartment in Parkside Apartments, Mumbles, offers a wonderful balance of comfort and convenience. The property features a well-proportioned double bedroom and a cosy single bedroom, making it ideal for first time buyers, downsizers and those looking for a second home in Mumbles.

The modern fitted kitchen and bathroom (with a bath and shower over) provide all the essentials for contemporary living. The highlight of the home, however, is the spacious living room, which boasts large patio doors opening onto a generous west-facing balcony — perfect for enjoying the afternoon sun and overlooking the serene greenery of Underhill Park.

With off-street parking and a prime location, this apartment is just a short stroll from both the vibrant boutiques and eateries of Mumbles village and the beautiful beaches of Langland and Rotherslade Bay.

A delightful home in a highly desirable spot!













The property is FREEHOLD

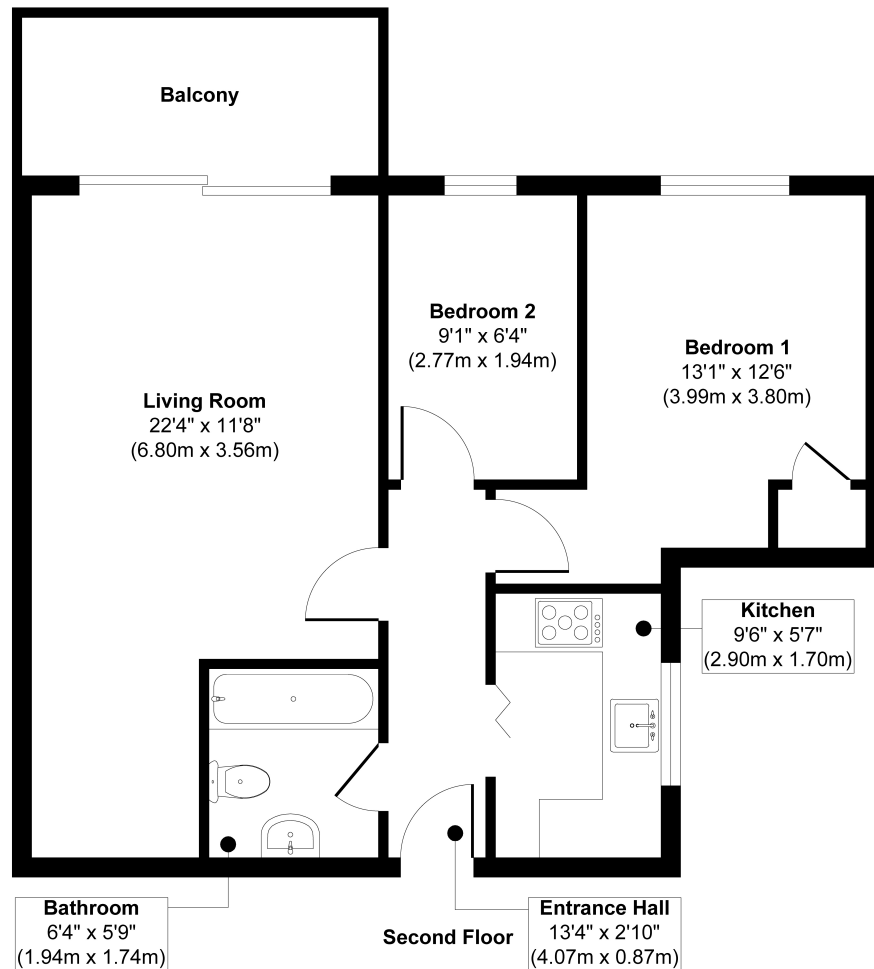
The property is connected to all mains services and the central heating is fired by a Gas boiler.

The council tax band is E (£2,314p.a.)

The EC rating is TBC



## 12 Parkside Apartments, Mumbles



**Approx. Gross Internal Floor Area 554 sq. ft / 51.53 sq. m**

Illustration for identification purposes only, measurements are approximate, not to scale.

Produced by Elements Property



Nestled along the picturesque coastline of South Wales, Mumbles is a coastal village that effortlessly blends charm, natural beauty, and vibrant community spirit. Imagine waking up to the soothing sound of the waves lapping against the shore, with stunning views of the bay greeting you each morning. Mumbles offers an idyllic lifestyle where you can enjoy the best of both worlds: the tranquility of coastal living and the convenience of modern amenities.

For those who love the outdoors, Mumbles is a dream come true. The village is the gateway to the breathtaking Gower Peninsula, renowned for its rugged cliffs, golden beaches, and scenic walking trails. Whether you're an avid hiker, a watersports enthusiast, or simply someone who enjoys a peaceful stroll along the promenade, Mumbles has something for everyone.

The village itself is a delightful mix of old and new, with its charming Victorian architecture sitting comfortably alongside contemporary cafes, boutiques, and restaurants. The vibrant food scene, with fresh seafood and local delicacies, will satisfy even the most discerning palate. And let's not forget the iconic Mumbles Pier and the historic Oystermouth Castle, which add a touch of nostalgia and history to this coastal gem.

Community is at the heart of Mumbles, where friendly locals and a calendar full of events create a welcoming atmosphere. From the bustling weekly market to the lively arts scene, there's always something happening that brings people together.

Living in Mumbles means embracing a lifestyle of relaxation and leisure, where every day feels like a holiday. It's the perfect place to unwind, enjoy nature, and be part of a close-knit community—all while being just a short drive away from the city lights of Swansea. If you're dreaming of a coastal haven with a rich heritage and a warm, welcoming vibe, Mumbles is the place to call home.





THE  
GREENROOM  
ESTATE AGENCY

01792 986099

info@thegreenroomhomes.com

www.thegreenroomhomes.com



Whilst every effort has been made to ensure these details are accurate, they are for illustrative purposes only and should be read as a guide and not relied upon. Internal floorplans may be subject to alteration. Dimensions listed are maximum and approximate. Computer generated images are for illustrative purposes only.



Zoopla.co.uk rightmove 