



Plot 5 Pen-Y-Fai Gardens

Llanelli, SA15 4EN

Offers in the region of £599,995

Pen Y Fai Gardens is an exclusive development of luxury homes from the award winning local development firm, Clews Homes.

The development is nestled on Pen Y Fai Lane with wonderful views over Llanelli and the Loughor Estuary.

Plot 5 is one of only two plots remaining on the site! It is a stunning detached home with four double bedrooms and three bathrooms on the first floor. On the ground floor there is a fantastic kitchen family room which opens onto the rear garden, a spacious reception room, a utility and WC.

The double garage is integral and this plot has a generous garden which wraps around the house.

The property will be ready for occupation in summer 2024.

Viewing

Please contact our The Greenroom Office on 01792 986 099 if you wish to arrange a viewing appointment for this property or require further information.

- Fabulous New Development From Clews Homes
- The Whiteford is a beautifully designed four bedroom detached home.
- Stunning Views Over Llanelli, The Loughor Estuary and Gower!
- Prime Llanelli Location
- Block Paved Driveways and Generous Gardens
- 10 Year Warranty



4



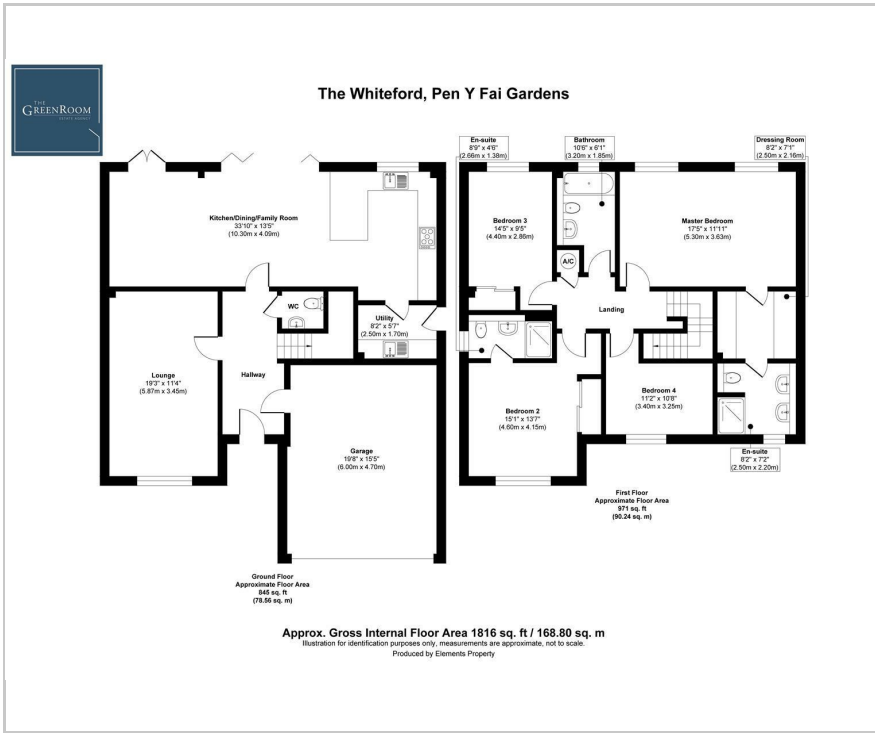
3



2



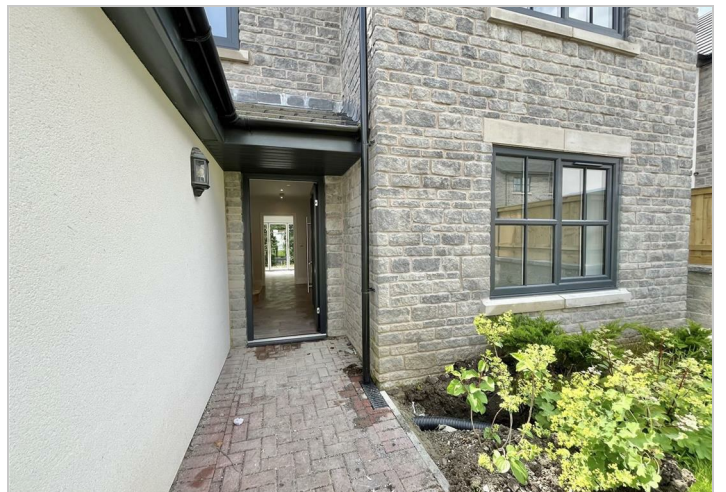
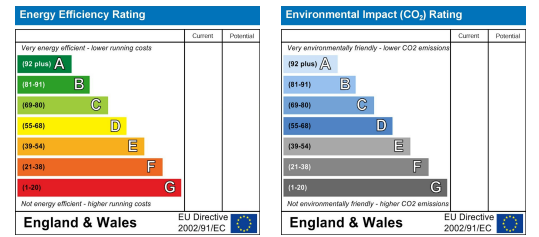
Floor Plan



Area Map



Energy Efficiency Graph



These particulars, whilst believed to be accurate are set out as a general outline only for guidance and do not constitute any part of an offer or contract. Intending purchasers should not rely on them as statements of representation of fact, but must satisfy themselves by inspection or otherwise as to their accuracy. No person in this firm's employment has the authority to make or give any representation or warranty in respect of the property.

Gower House, 28-30 Dunns Lane, Mumbles, SA3 4AA

T: 01792 986099

E: info@thegreenroomhomes.com

www.thegreenroomhomes.com