



NEIL ROBINSON

Estate Agents



# Millrose Close, Skelmersdale, WN8 8QT

£150,000

🛏 3 🚿 2 🛋 1

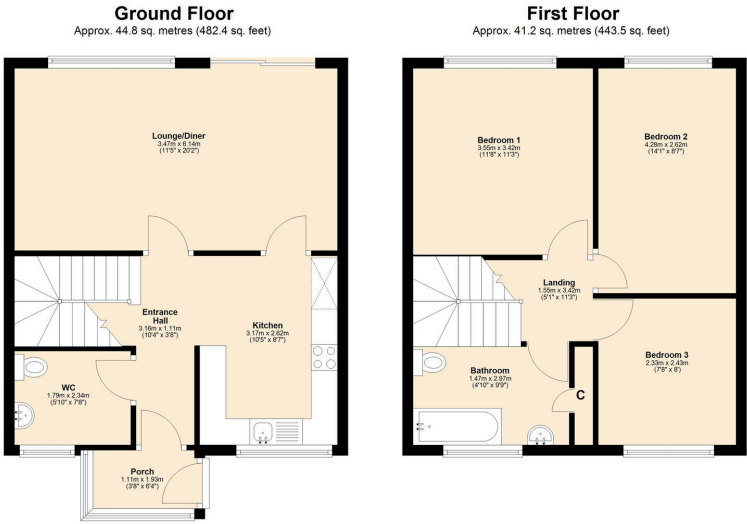


- Desirable Old Skelmersdale Location
- Spacious Family Home
- Large Lounge & Dining Area
- Fitted Kitchen
- Downstairs WC / Utility
- Three Bedrooms
- Fitted Bathroom
- Front & Rear Gardens
- Communal Parking Available
- No Chain!





Spacious three bedroom terraced property available for sale in the highly sought after residential area of Millbrook Close situated in Old Skelmersdale.



Total area: approx. 86.0 sq. metres (925.9 sq. feet)

12/10/25, 4:10 PM Energy performance certificate (EPC) - Find an energy certificate - GOV.UK

Energy performance certificate (EPC)		
109 Millbrook Close SKELMERSDALE WN8 6LJ	Energy rating <b>D</b>	Valid until 18 December 2035
		Certificate number 9350-2128-2525-2885-0775
Property type Mid-terrace house		
Total floor area 82 square metres		

**Rules on letting this property**

Properties can be let if they have an energy rating from A to E.

You can read [guidance for landlords on the regulations and exemptions](https://www.gov.uk/guidance/domestic-private-rented-property-minimum-energy-efficiency-standards-guidance) <https://www.gov.uk/guidance/domestic-private-rented-property-minimum-energy-efficiency-standards-guidance>

**Energy rating and score**

This property's energy rating is D. It has the potential to be C.

[See how to improve this property's energy efficiency](#)

The graph shows this property's current and potential energy rating.

Properties get a rating from A (best) to G (worst) and a score. The better the rating and score, the lower your energy bills are likely to be.

For properties in England and Wales:  
the average energy rating is D  
the average energy score is 60

Score	Energy rating	Current	Potential
92+	A		
81-91	B		
69-80	C		
55-68	D	55 D	77 C
35-54	E		
21-34	F		
1-20	G		

<https://find-energy-certificate.service.gov.uk/energy-certificate/9350-2128-2525-2885-0775/print-view>

1/5

Skelmersdale Office  
01695 355110  
108 The Concourse  
Skelmersdale  
WN8 6LJ

Ashton-in-Makerfield Office  
01942 466221  
405 Wigan Road  
Ashton-in-Makerfield  
WN4 0AR



[www.neilrobinson.co.uk](http://www.neilrobinson.co.uk)