



NEIL ROBINSON

Estate Agents

Ambergate, Skelmersdale, WN8 9JN

Offers Over £165,000

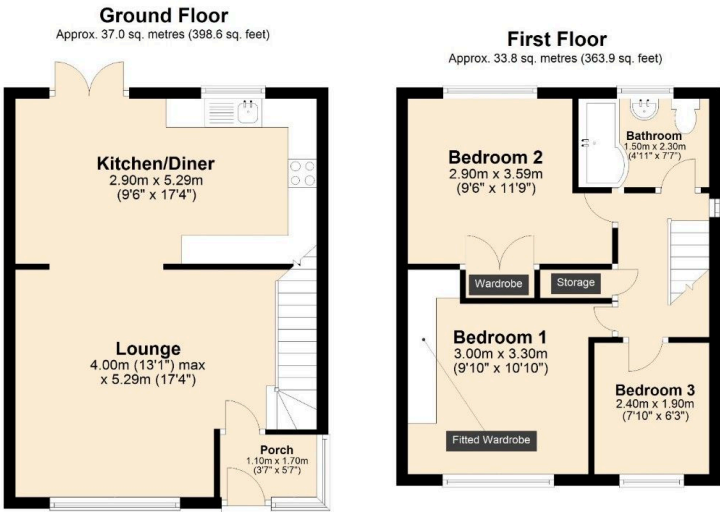
 3  1  1



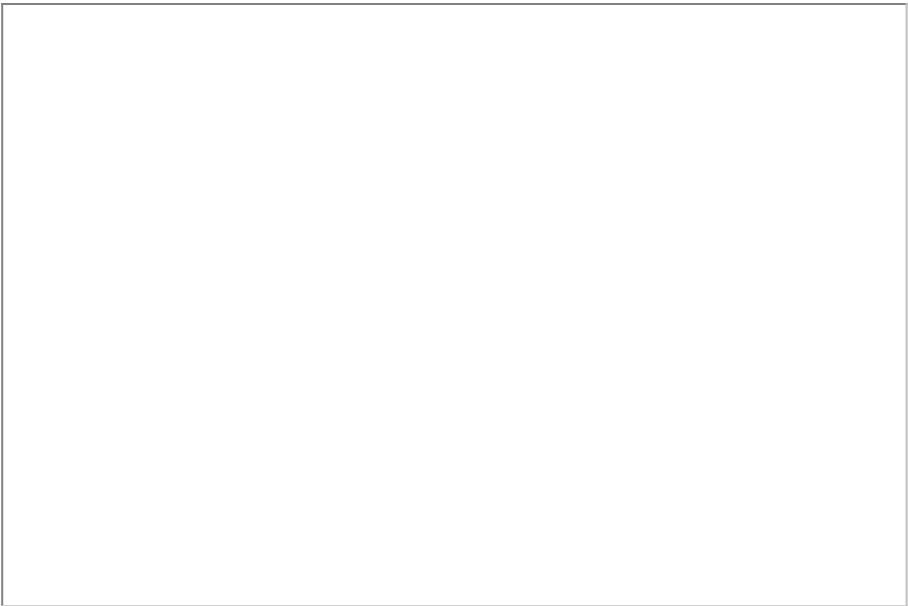
- Desirable Residential Location
- Modern Fitted Kitchen
- Three Bedrooms
- Front & Rear Gardens
- Freehold Tenure
- Semi Detached Family Home
- Spacious Lounge
- Fitted Bathroom
- Driveway
- No Chain!



Spacious three bedroom semi detached family home available for sale in the sought after residential area of Ambergate situated in Skelmersdale.



Total area: approx. 70.8 sq. metres (762.5 sq. feet)



Skelmersdale Office
01695 355110
108 The Concourse
Skelmersdale
WN8 6LJ

Ashton-in-Makerfield Office
01942 466221
405 Wigan Road
Ashton-in-Makerfield
WN4 0AR



www.neilrobinson.co.uk