



**NEIL ROBINSON**  
Estate Agents

## Palm Court, Skelmersdale, WN8 8PZ

£230,000

3 1 2



**Skelmersdale Office**  
01695 355110

108 The Concourse  
Skelmersdale  
WN8 6LJ

**Ashton-in-Makerfield Office**  
01942 466221

405 Wigan Road  
Ashton-in-Makerfield  
WN4 0AR



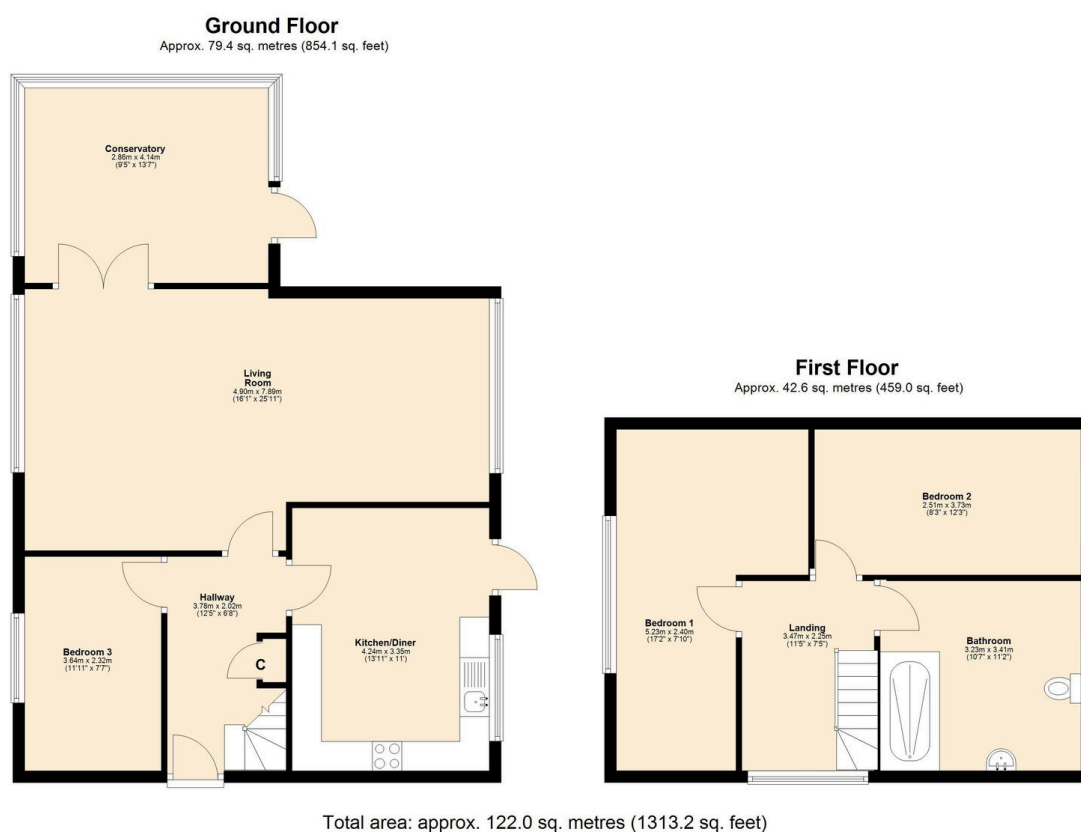
[www.neilrobinson.co.uk](http://www.neilrobinson.co.uk)



NEIL ROBINSON

Estate Agents

- Detached Family Home
- Modern Fitted Kitchen
- Conservatory
- Modern Fitted Bathroom
- Driveway
- Desirable Residential Area
- Spacious Lounge
- Three Bedrooms
- Surrounding Gardens
- Freehold Tenure



Nicely presented three bedroom detached family home available for sale in the highly sought after residential area of Palm Court situated in Old Skelmersdale.

Skelmersdale Office  
01695 355110

108 The Concourse  
Skelmersdale  
WN8 6LJ

Ashton-in-Makerfield Office  
01942 466221

405 Wigan Road  
Ashton-in-Makerfield  
WN4 0AR



[www.neilrobinson.co.uk](http://www.neilrobinson.co.uk)