



NEIL ROBINSON

Estate Agents



## Maiden Close, Skelmersdale, WN8 8JL

Offers Over £196,000

 3  3  1

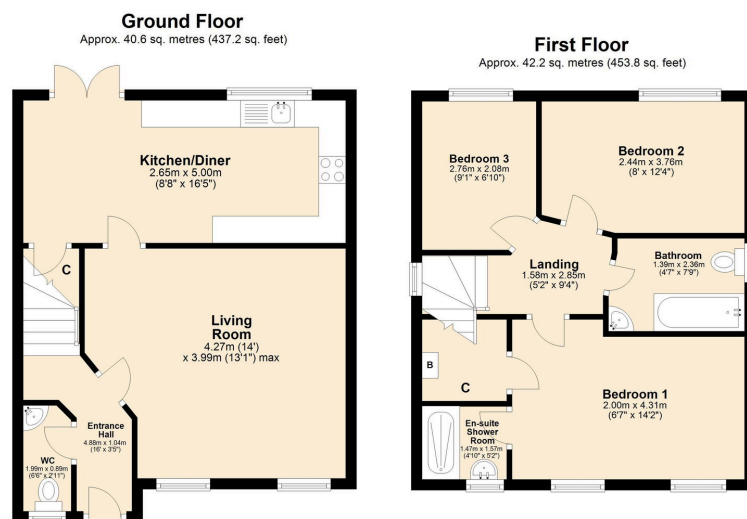


- Desirable Old Skelmersdale Location
- Kitchen & Dining Area
- Downstairs WC
- En-Suite Bathroom
- Front & Rear Gardens
- Detached Family Home
- Spacious Lounge
- Three Bedrooms
- Modern Family Bathroom
- Freehold Tenure

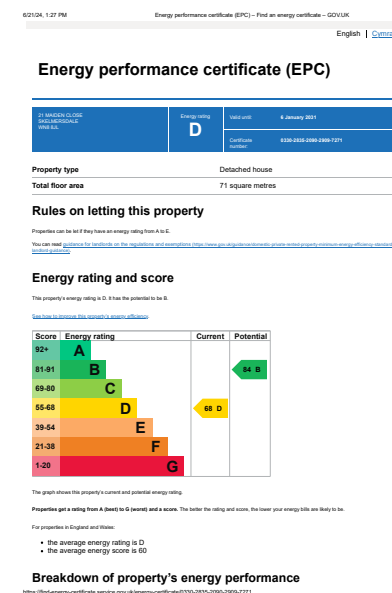




Nicely presented three bedroom detached family home for sale in the quiet residential estate of Maiden Close, situated in Old Skelmersdale.



Total area: approx. 82.8 sq. metres (891.0 sq. feet)



**Skelmersdale Office**  
01695 355110  
108 The Concourse  
Skelmersdale  
WN8 6LJ

**Ashton-in-Makerfield Office**  
01942 466221  
405 Wigan Road  
Ashton-in-Makerfield  
WN4 0AR



[www.neilrobinson.co.uk](http://www.neilrobinson.co.uk)