



Curzon Avenue, Winnington
Offers Over £140,000





Looking to take your first step onto the property ladder in Northwich, or downsize to a low-maintenance apartment in a sought-after location? This beautifully presented first-floor apartment in Winnington, Northwich, Cheshire may be the hidden gem you've been waiting for.

Set within the popular Winnington village and positioned at the end of a quiet road overlooking the River Weaver, this modern apartment offers the perfect balance of convenience, privacy and scenic surroundings, ideal for first-time buyers, professionals or those seeking a peaceful yet well-connected home.



From the moment you step inside, the sense of space is immediately noticeable. The wide, bright entrance hall runs through the heart of the apartment, enhanced by multiple windows and an open aspect that allows natural light to flood the home throughout the day.

The accommodation includes two generous double bedrooms, both enjoying tranquil river views, mature treelines and glimpses of the historic footbridges beyond, a rare and calming outlook that's hard to find in apartment living. Centrally positioned is a modern bathroom, complete with a shower over the bath, offering flexibility for busy mornings or relaxed evening soaks.

"Internally, the home is modern, well maintained and beautifully presented, offering a truly move-in-ready opportunity."

The true showstopper of this home is the open-plan living, dining and kitchen space. With Juliette balcony doors framing uninterrupted views of the River Weaver, this room creates a real sense of calm and escape, your own private retreat after a busy day. Designed for modern living, the open-plan layout allows you to entertain effortlessly while staying connected with friends or family.



The contemporary high-gloss grey kitchen is both stylish and practical, featuring an eye-level double oven, hob, ample storage and integrated appliances including a dishwasher, fridge freezer and washer dryer, making everyday living refreshingly easy.

At the opposite end of the room, there is ample space for a comfortable lounge area, perfect for relaxed evenings, social catch-ups and enjoying the ever-changing river views. As day turns to evening, the lights across Barnton glimmer through the balcony doors, creating a serene and picturesque backdrop whatever the season.

“Look outside and the sense of calm continues from inside to out.”

Despite its peaceful setting, the apartment is exceptionally well located. Roman Bar, Eleven Coffee Shop, Domino's Pizza and the Co-op are all less than a minute's walk away, making this an ideal spot for those who value both lifestyle and convenience. Northwich town centre is nearby for more shops, boutiques, restaurants and bars, providing plenty of things to do. For commuters or weekend explorers, the property also benefits from two allocated parking spaces, with easy access to spots such as Cheshire Oaks, the Trafford Centre, Manchester, Warrington, Liverpool and Chester. Those wanting the scenic escapes, you also have Anderton boat lift within walking distance which is next to Anderton Nature Park. This connects with Marbury Country Park, Carey Park and Neumann's Flashes, providing some wonderfully scenic walks, and the canal towpath can take you on a journey all across Cheshire if your feet can take it.





Beautifully maintained, modern throughout and offering easy, low-maintenance living, this apartment proves that buying your first home, or downsizing, doesn't mean compromising on space, views or location. This is a rare opportunity to secure a riverside apartment in one of Northwich's most popular locations.

It doesn't just tick boxes, it understands a busy life. And it's ready to welcome you home after a hard day.

Why Winnington?

Winnington is one of Northwich's most sought-after residential locations, offering the perfect blend of riverside living, village atmosphere and everyday convenience. Set along the River Weaver, the area is known for its scenic walks, peaceful surroundings and strong sense of community, while still being exceptionally well connected. With independent coffee shops, local bars, supermarkets and transport links all within easy reach, Winnington appeals to first-time buyers, professionals and downsizers alike. Its proximity to Northwich town centre, Barnton, Hartford, Cheshire Oaks, Manchester, Warrington, Chester and Liverpool makes it an ideal base for both commuting and lifestyle living, combining calm, character and connectivity in one highly desirable location.



"A home that is not only positioned on a fantastic spot, but is also nestled within the heart of the community."



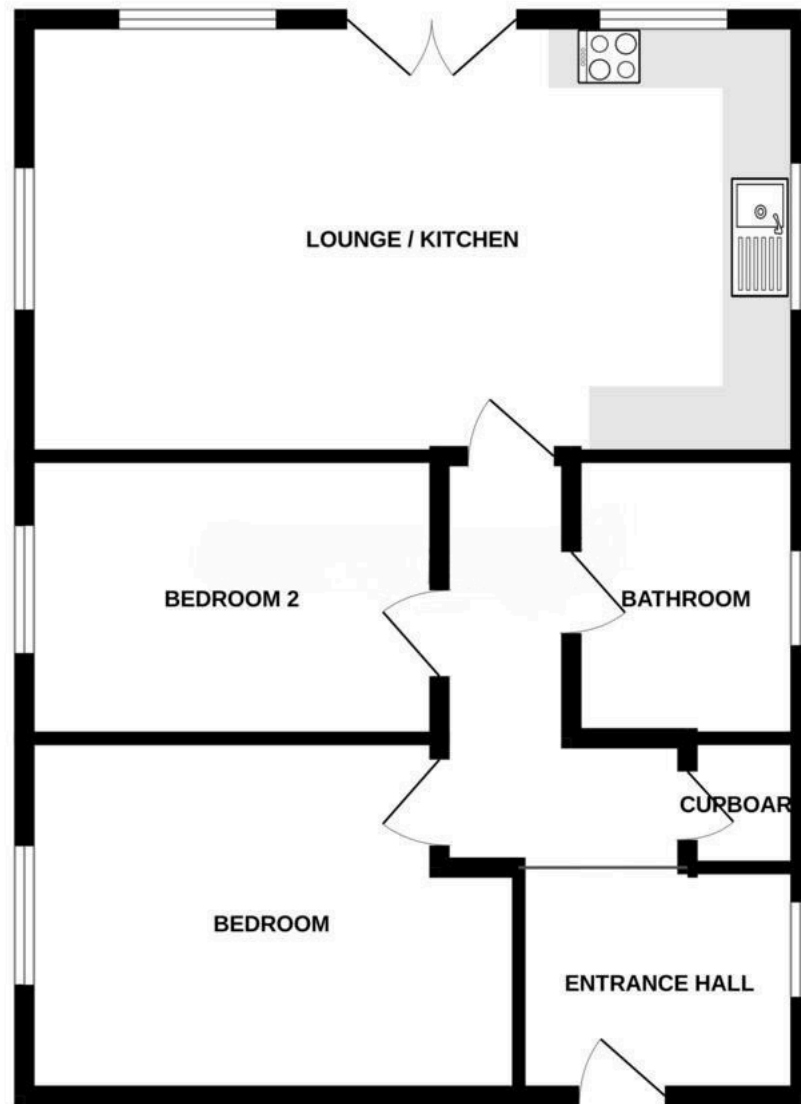
Local Life in Winnington

Winnington offers a lifestyle that's hard to beat, combining riverside living with an active, social and community-focused feel. For those who enjoy keeping active, Destination Padel at Winnington has quickly become a local favourite, offering a modern space to socialise and stay fit, while Hartford Golf Club is nearby for those who enjoy open greens and a relaxed weekend pace. The area is also home to well-supported local rugby and football clubs, adding to the strong sense of community and making it easy to get involved or enjoy matchdays close to home. Scenic River Weaver walks, nearby green spaces and cycle routes make everyday exercise effortless, while popular local spots such as Roman Bar, Eleven Coffee Shop and independent eateries provide relaxed places to meet friends. With Northwich town centre, Barnton and Hartford all close by, Winnington appeals to buyers looking for a balanced lifestyle, active when you want it, peaceful when you need it.



"Whether you are looking to escape the hustle and bustle life can bring, or the ease of access to it, you can have it all here."







Amy Walley

01606 531338 | 07749 163356 | amy.walley@theagencyuk.com



@thatpropertygirlamy