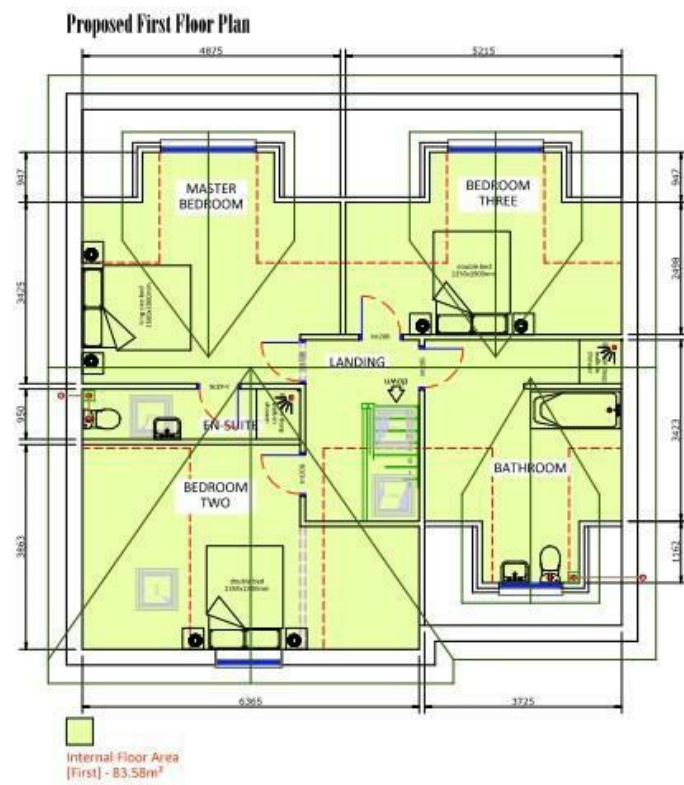
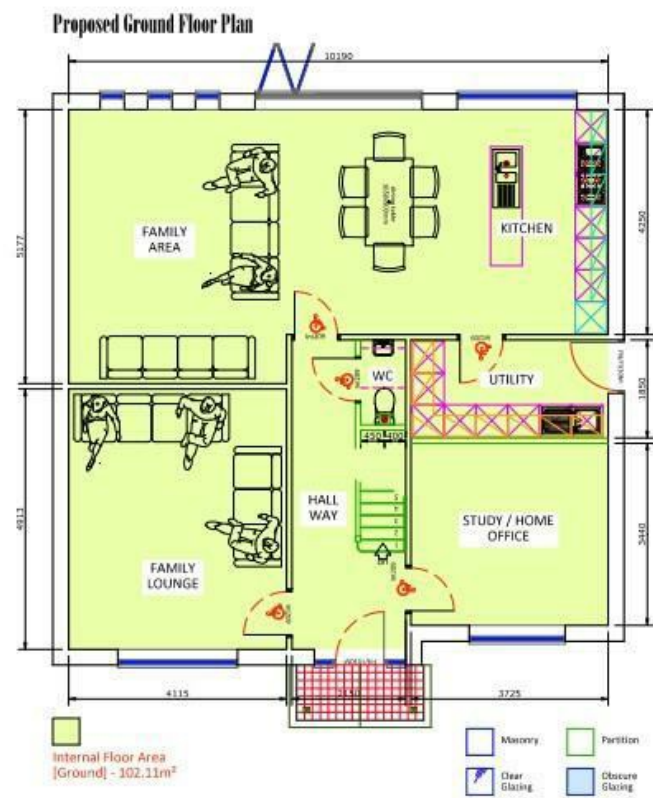


**Proposed Front Elevation**



## The Leightons, Neston, Cheshire CH64 6QD

£325,000

3 Bedroom
 3 Reception
 2 Bathroom

\*\*\*A Rare Opportunity - Build Your Dream Home - Building Plot In Highly Sought After Location\*\*

Hewitt Adams are delighted to offer to the market this building plot with outline planning permission for a circa 2000 square foot, THREE/FOUR bedroom, detached dormer bungalow which would form part of the highly sought after road The Leightons. A stones throw from Neston Town Centre and Parkgate Promenade which have excellent local amenities, good transport links and catchment for highly acclaimed schools.

There are stunning views of The Welsh Hills and Dee Estuary from the elevated position. On the site already there is a brick built double garage with double doors and the site has recently been cleared.

The outline planning permission has just over 11 months left on it without seeking an extension.

Please follow this link for further details on Cheshire West and Chester website:

<https://pa.cheshirewestandchester.gov.uk/online-applications/applicationDetails.do?activeTab=documents&keyVal=QD8VEYTEFKS00>

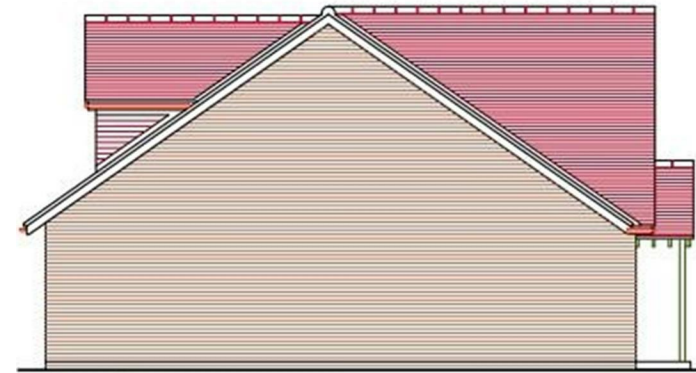




Proposed Rear Elevation



Proposed Side Elevation



Proposed Side Elevation

