

St. Quintin Gardens,
North Kensington. W10 6AS

£4,000,000



A stunning, 3 storey Victorian semi detached 6 bedroom house with large private garden, for sale in North Kensington W10.

The ground floor entertaining space flows from the wide entrance hallway and double reception room, through the bright kitchen with contemporary glazed extension, onto the 50ft garden with large terrace. Well presented throughout, highlighting contemporary style and period detailing in harmony, the property has high ceilings and a beautiful modern kitchen. Upstairs the master bedroom occupies the whole of the second floor, with ensuite bathroom and separate dressing room, there are a further 5 bedrooms, all with generous proportions and 2 bathrooms.

The house has good storage, a utility/ground floor WC and basement.

St Quintin Gardens runs between St Quintin Avenue and Barlby Road, close to local shops. There is a friendly park and playground nearby and Wormwood Scrubs is also close for excellent dog walking. The amenities of Portobello Road and Westfield Shopping Centre, as well as White City (Central Line) and Latimer Road (Circle and Hammersmith & City Lines) underground stations are on hand.



Council Tax band: G

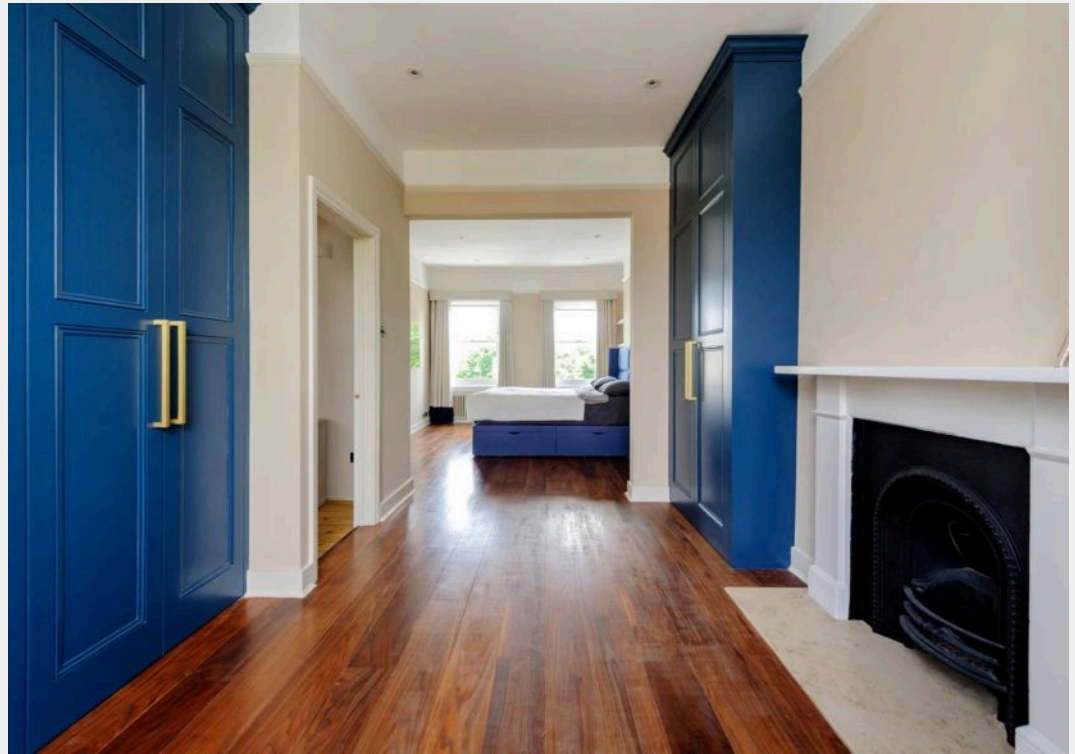
Tenure: Freehold

EPC Energy Efficiency Rating: D

EPC Environmental Impact Rating: E



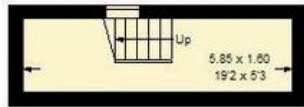




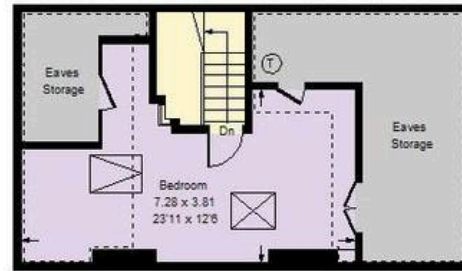


St. Quintin Gardens, W10

Approx. Gross Internal Area = 281.8 sq m / 3033 sq ft
 Eaves Storage = 21.8 sq m / 235 sq ft
 External Cupboard = 2.0 sq m / 21 sq ft
 Total = 305.6 sq m / 3289 sq ft



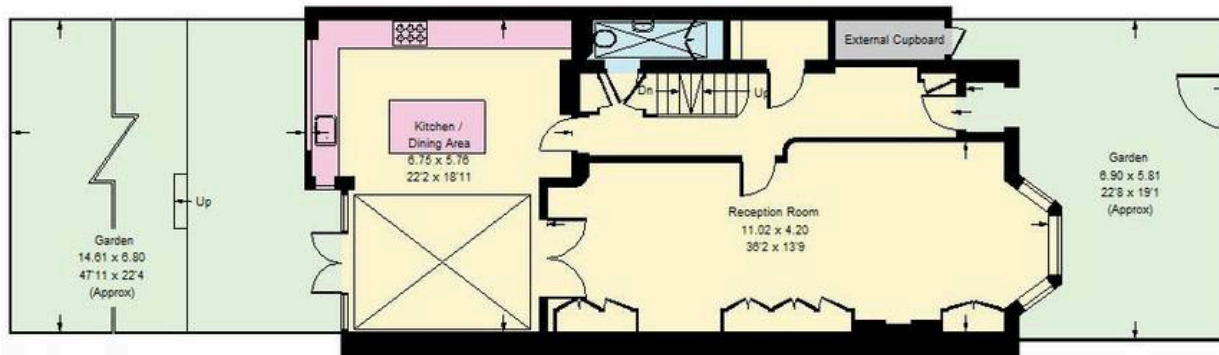
Basement



Third Floor



Second Floor



Ground Floor



First Floor

Whilst every attempt has been made to ensure the accuracy of the floor plan, measurements are approximate and not to scale.
 No guarantee is given on the total square footage of the property quoted on the plan. Figures given are for guidance.
 Plan is for illustration purposes only, not to be used for valuations.



Rigby & Marchant

115 Westbourne Studios 242 Acklam Road, London - W10 5JJ

020 7221 7210

sales@rigbyandmarchant.co.uk

www.rigbyandmarchant.co.uk/

