



Highlever Road,
North Kensington. W10 6PR



£2,300,000 | £6,717 pcm



An absolutely beautiful four bedroom family house, with lots of character and charm, offering extremely light and spacious accommodation.

The house offers 2 separate but neighboring reception rooms with wood floors and kitchen/breakfast room all on the ground floor, leading to a lovely west facing garden. Upstairs are four large double bedrooms, excellent storage space and two modern bathrooms, one with a separate walk in shower.

- 4 bedroom, 2 bathroom house
- Freehold
- West facing garden
- Eat in kitchen





59 Highlever Road

London, London

Highlever Road is a wonderful quiet residential street a short walk from Ladbroke Grove underground station, Portobello Road and serviced by excellent bus routes.

Council Tax band: G

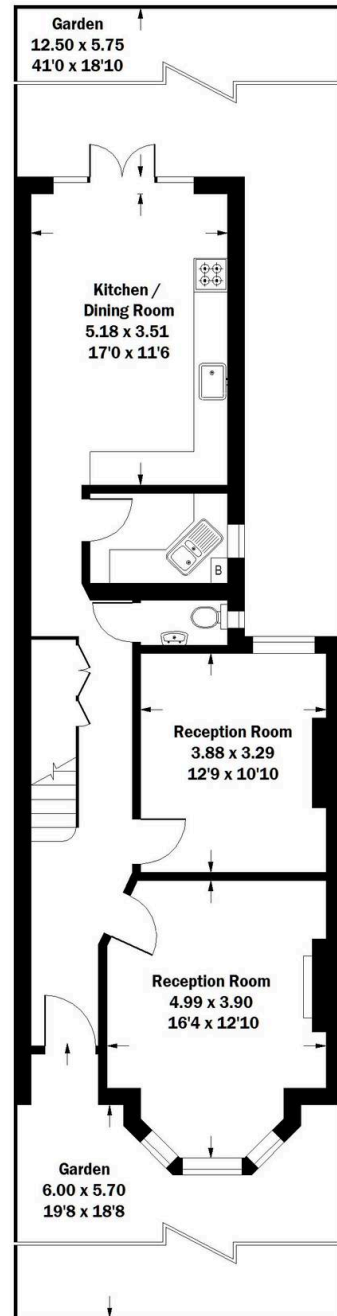
Tenure: Freehold

EPC Energy Efficiency Rating: D

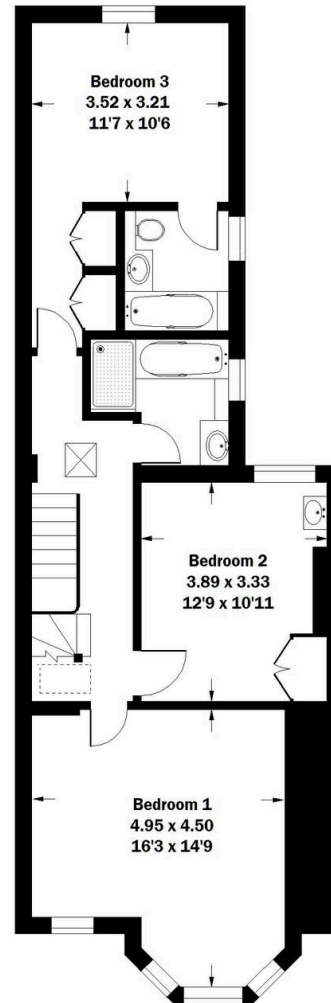
EPC Environmental Impact Rating: E

Highlever Road, W10

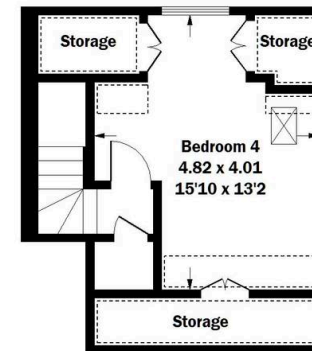
Approximate Gross Internal Area : 169 sq m / 1819 sq ft



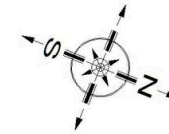
Ground Floor




First Floor



Second Floor



 = Reduced headroom
below 1.5 m / 5'0



Rigby & Marchant

115 Westbourne Studios 242 Acklam Road, London - W10 5JJ

020 7221 7210

sales@rigbyandmarchant.co.uk

www.rigbyandmarchant.co.uk/

