

**Finstock Road,**  
North Kensington. W10 6LT

**£3,500,000**





An exceptional and unique, architect designed, 5 bedroom Edwardian semi detached house, in North Kensington W10. The property has undergone a comprehensive refurbishment to exacting standards offering a wealth of reception space and maximising light throughout. The extensive living space comprises a large reception space and Kitchen with bifold doors onto the garden, cinema/family room, home office and gym.

There are 2 ensuite bedrooms and 3 further bedrooms and 2 bathrooms.

- Architecturally designed
- Semi-detached freehold house
- Extensive living space
- 5 Bedrooms, 4 bathrooms





Finstock Road is a quiet residential road in the St. Quintin Conservation area, serviced by some of the best schools to be found in London.

The location is surrounded by the vibrant Portobello Road, the boutiques of Notting Hill and the excellent amenities of Westfield Shopping Centre.

Ladbroke Grove Underground Station can be reached by foot on the Circle and Hammersmith & City lines and the A40 is easily accessed for routes in and out of London.

Council Tax band: G

Tenure: Freehold

EPC Energy Efficiency Rating: D

EPC Environmental Impact Rating: E









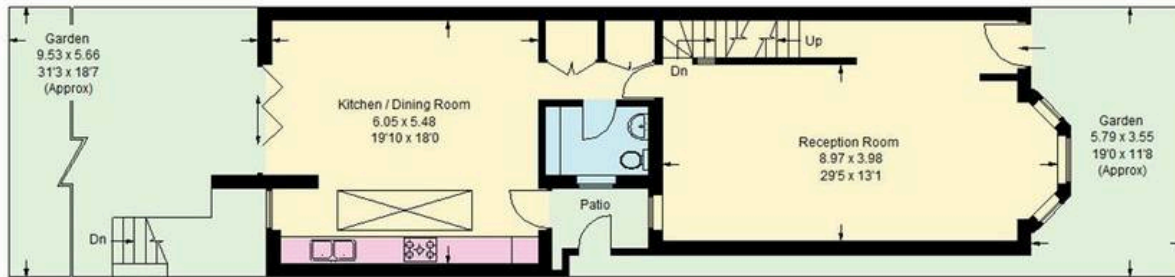




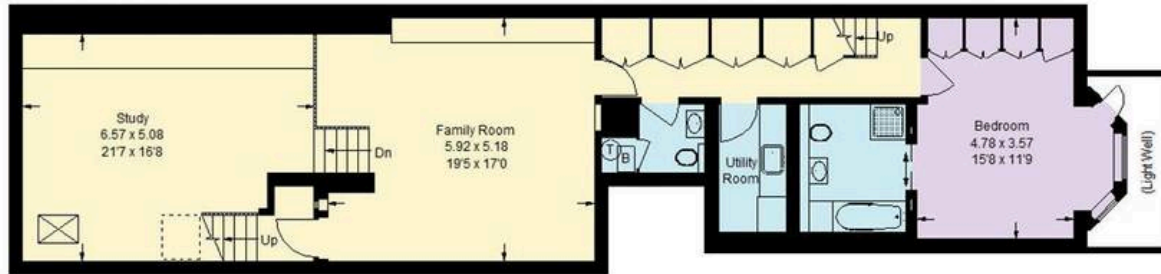


## Finstock Road, W10

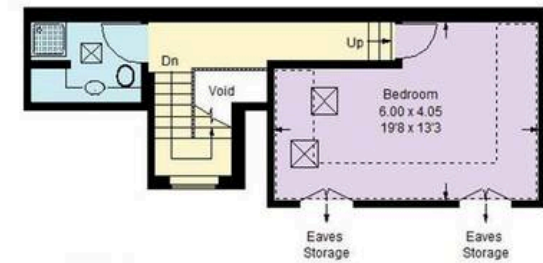
Approximate Gross Internal Area = 311 sq m / 3346 sq ft  
(Excluding Void)



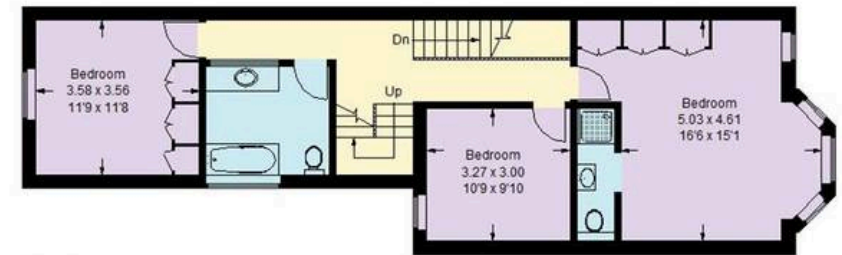
Ground Floor



Lower Ground Floor



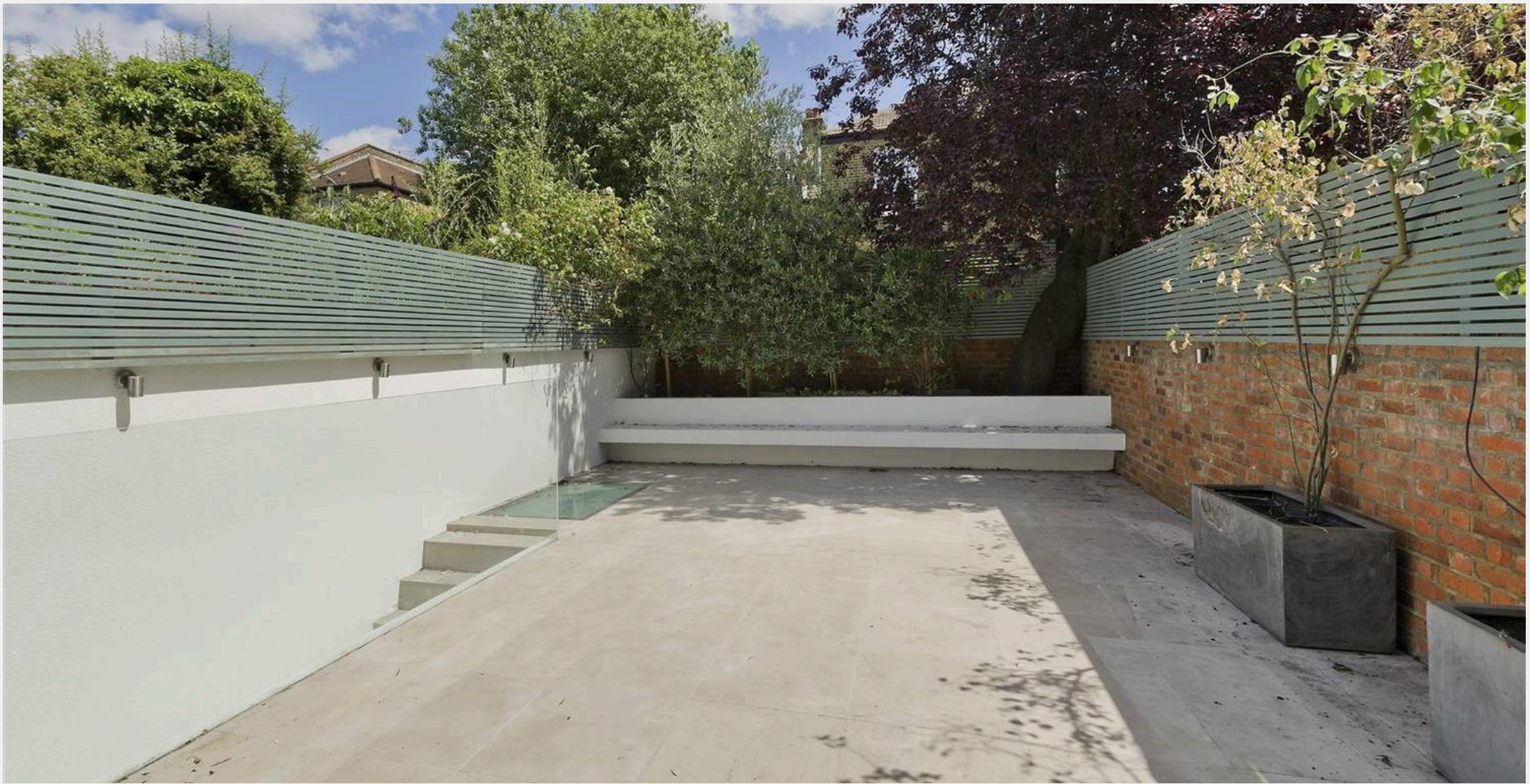
Second Floor



First Floor

= Reduced headroom below 1.5 m / 5'0"

Whilst every attempt has been made to ensure the accuracy of the floor plan, measurements are approximate and not to scale.  
No guarantee is given on the total square footage of the property quoted on the plan. Figures given are for guidance.  
Plan is for illustration purposes only, not to be used for valuations.



## Rigby & Marchant

115 Westbourne Studios 242 Acklam Road, London - W10 5JJ

020 7221 7210

[sales@rigbyandmarchant.co.uk](mailto:sales@rigbyandmarchant.co.uk)

[www.rigbyandmarchant.co.uk/](http://www.rigbyandmarchant.co.uk/)

