

237 Putney Bridge Road, London

SW15

Guide Price £950,000

RIGBY & MARCHANT



# 237 Putney Bridge Road

SW15

Charming Three-Bedroom Home with South-Facing Garden & Extension Potential (STPP).

Step into this beautifully finished three-bedroom home, where period charm meets modern comfort. As you enter, you're welcomed into a bright and spacious open-plan reception and dining area, complete with warm oak-engineered flooring and stunning antique cast iron radiators, salvaged from a historic St James' building. This inviting space flows seamlessly into a well-fitted galley kitchen, which leads directly out to a sun-drenched south-facing patio garden—perfect for relaxing or entertaining.

Heading upstairs, you'll find a stylish family bathroom with underfloor heating, along with a versatile third bedroom at the rear, ideal as a study or a single bedroom. The first floor is completed by two well-proportioned double bedrooms, offering comfortable and tranquil living spaces.

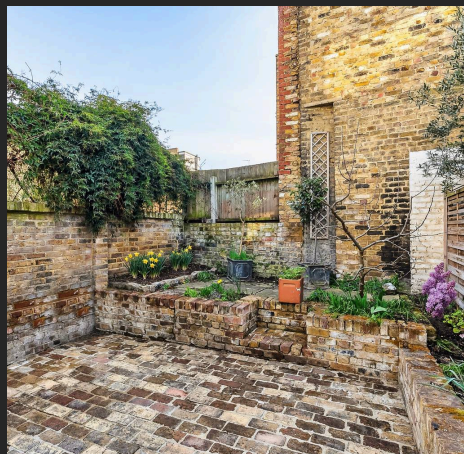
What truly makes this property special is its potential. There's scope to extend into the side return and the loft (subject to planning consent), with previous planning permission already granted for both.

Location Highlights: • Excellent transport links: Putney Bridge & East Putney Tube, Putney Rail, and riverboat services from Putney & Wandsworth Piers. • Easy access to Putney High Street and Wandsworth's shops, cafés, and amenities.

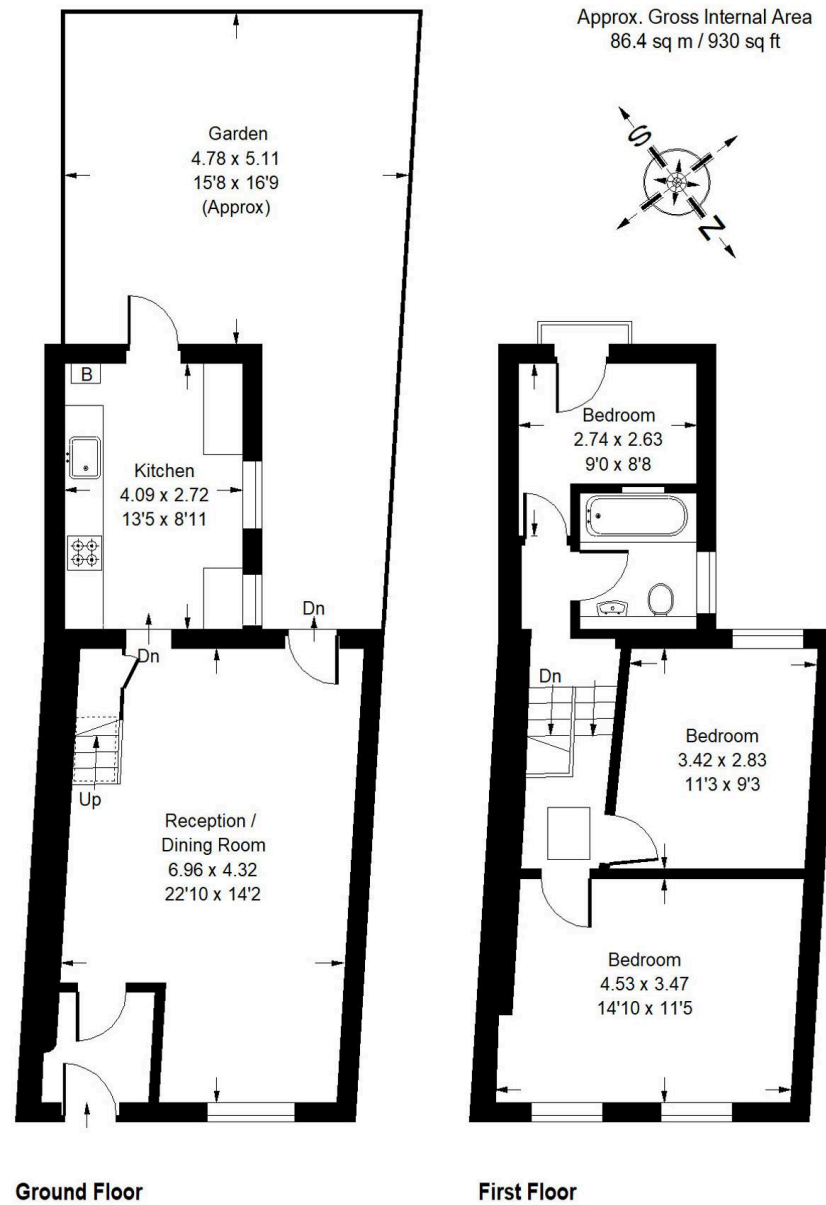
Council Tax band: F

Tenure: Freehold

EPC Energy Efficiency Rating: D



# Putney Bridge Road, SW15



Whilst every attempt has been made to ensure the accuracy of the floor plan, measurements are approximate and not to scale.  
No guarantee is given on the total square footage of the property quoted on the plan. Figures given are for guidance.  
Plan is for illustration purposes only, not to be used for valuations.





## Rigby & Marchant

115 Westbourne Studios 242 Acklam Road, London - W10 5JJ

020 7221 7210

[sales@rigbyandmarchant.co.uk](mailto:sales@rigbyandmarchant.co.uk)

[www.rigbyandmarchant.co.uk/](http://www.rigbyandmarchant.co.uk/)

RIGBY &  
MARCHANT