



Cardross Street,  
Brackenbury Village W6

£1,500,000

RIGBY & MARCHANT



# Cardross Street

Brackenbury Village, W6

Originally built in 1890 as a public house, the “Rising Sun” was converted back to a freehold house in the 1960’s. Retaining much of its original charm (but minus the bar), the large open plan ground floor reception has its original wooden floors including a trap door to the large cellar under the main body of the building. Double doors lead to a spacious kitchen and thence the west facing garden.

Upstairs are 3 generous bedrooms, the family bathroom and a large unconverted loft.

Cardross Street is a tree lined and much sought after residential street in Brackenbury Village, which runs between Dalling Road and Aldensley Road. There are a variety of local cafes, shops and restaurants and stations include Ravenscourt Park, Goldhawk Road, Hammersmith Broadway and Shepherds Bush where there is also the Westfield London.

Council Tax band: G

Tenure: Freehold

EPC Energy Efficiency Rating: D

EPC Environmental Impact Rating: D






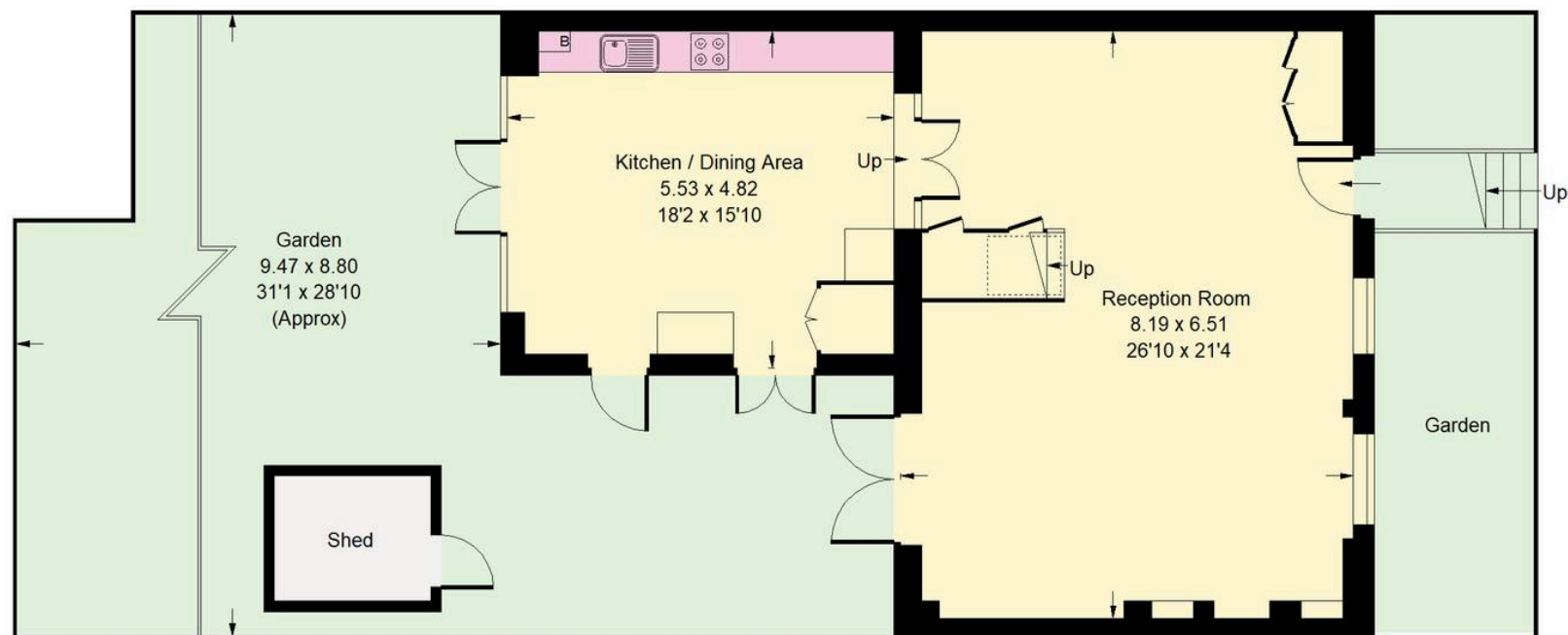
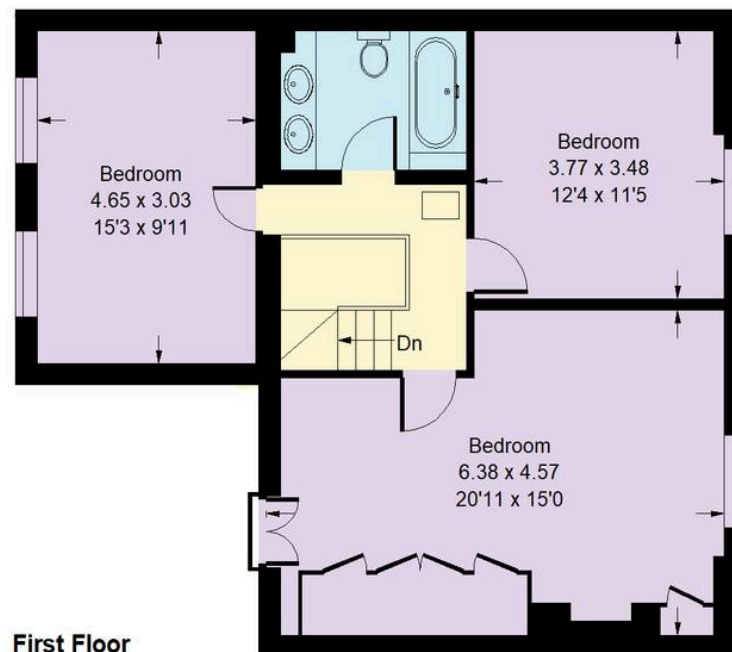
## Cardross Street, W6

Approx. Gross Internal Area  
149.1 sq m / 1605 sq ft



 = Reduced headroom  
below 1.5 m / 5'0"

**First Floor**



**Ground Floor**

Whilst every attempt has been made to ensure the accuracy of the floor plan, measurements are approximate and not to scale.  
No guarantee is given on the total square footage of the property quoted on the plan. Figures given are for guidance.  
Plan is for illustration purposes only, not to be used for valuations.





## Rigby & Marchant

Westbourne Studios, London - W10

020 7221 7210

[sales@rigbyandmarchant.co.uk](mailto:sales@rigbyandmarchant.co.uk)

[www.rigbyandmarchant.co.uk/](http://www.rigbyandmarchant.co.uk/)

RIGBY &  
MARCHANT