

St Quintin Avenue, North Kensington W10

£1,100,000

RIGBY & MARCHANT

St Quintin Avenue

North Kensington W10

Well-located flat with tasteful interiors on a tree lined street in North Kensington W10.

Stepping into the flat on the raised ground floor, the entrance hall leads into an impressive reception room. The open-plan kitchen with modern fitted units flows through to a living space consisting of dining and seating areas. High ceilings, full-length bay windows and a stunning wooden floor, showcase the attention to detail, while an ornate cornice and plaster mouldings create an impression of elegance.

The flat has been decorated in a smart fashion that mixes classic style with modern convenience.

The 2 bedrooms are situated overlooking the gardens at the back with built in wardrobes, and there is an extremely smart shower room.

The flat is conveniently located for Latimer Road and Ladbroke Grove (Hammersmith & City line) underground stations. St Quintin Avenue is a popular residential street in North Kensington, moment's walk to Kensington Memorial Park with its cafe and tennis courts and only a short walk from the world famous Portobello Road, providing an excellent selection of cafes and shops.

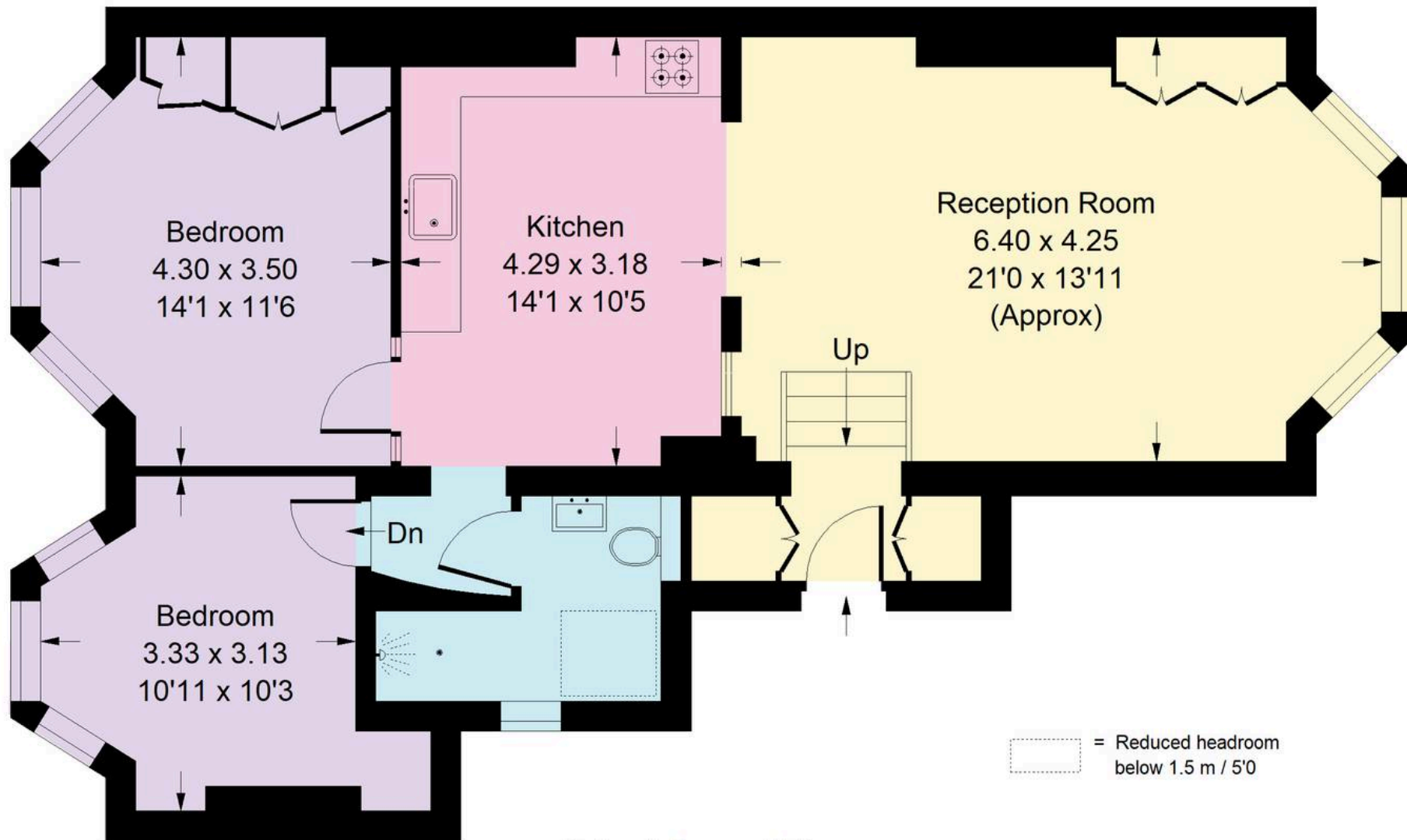
Council Tax band: TBD

Tenure: Leasehold



St. Quinton Avenue, W10

Approx Gross Internal Area
76 sq m / 818 sq ft



Raised Ground Floor

Whilst every attempt has been made to ensure the accuracy of the floor plan, measurements are approximate and not to scale.
No guarantee is given on the total square footage of the property quoted on the plan. Figures given are for guidance.
Plan is for illustration purposes only, not to be used for valuations.



Rigby & Marchant

Westbourne Studios 242 Acklam Road, London - W10

020 7221 7210

sales@rigbyandmarchant.co.uk

www.rigbyandmarchant.co.uk/

RIGBY &
MARCHANT