

Bassett Road, North Kensington,

London. W10 6JL

RIGBY & MARCHANT

A grand raised ground-floor apartment on North Kensington's, W10 most admired street. This handsome Victorian Villa bookends the elegant terrace of Bassett Road and benefits from a bright south west facing corner plot.

The home occupies the left hand side of the raised ground and affords the home multiple aspects, filling the voluminous rooms with light and views beyond. The bay windowed reception has strikingly high ceilings and a statement fireplace and further benefits from two generously sized bedrooms, bathroom and separate kitchen.

For many years it has been a happy rental home for it's tenants and is now at a point where it would benefit from some cosmetic updating to create an exceptional dwelling on this sought after street.

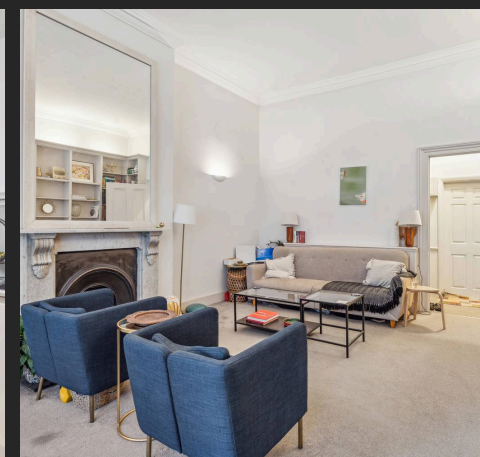
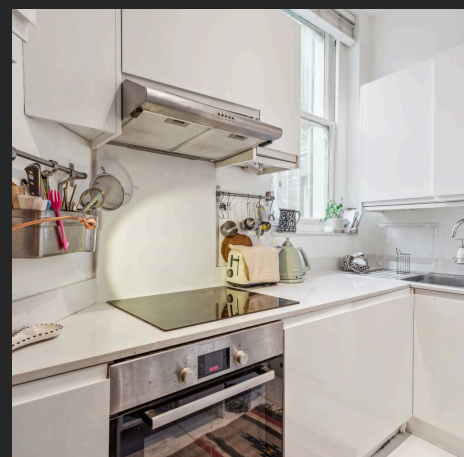
Set on the coveted Bassett Road in North Kensington, the property enjoys proximity to the vibrant shops, eclectic restaurants, and stylish bars of Golborne Road and Portobello Road. With Ladbroke Grove Underground Station just a short walk away, offering connections via the Circle and Hammersmith & City lines, this location truly balances tranquillity and convenience.

Council Tax band: F

Tenure: Share of Freehold

EPC Energy Efficiency Rating: D

EPC Environmental Impact Rating: D



Bassett Road, W10

Approximate gross internal area

84.82 sq m / 913 sq ft



Raised Ground Floor

Not to scale, for guidance only and must not be relied upon as a statement of fact.
All measurements and areas are approximate only



Rigby & Marchant

115 Westbourne Studios 242 Acklam Road, London - W10 5JJ

020 7221 7210

sales@rigbyandmarchant.co.uk

www.rigbyandmarchant.co.uk/

RIGBY &
MARCHANT