



Ladbroke Grove,

London. W10 5LU

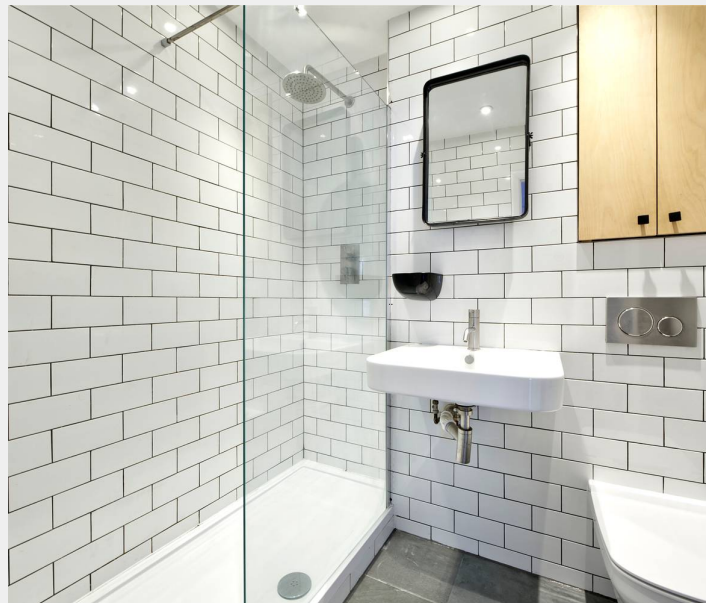


£730,000



An impressively bright and neatly refurbished two-bedroom apartment, nestled in the vibrant heart of North Kensington, W10. Due to its corner location, this elegant home boasts a spacious lateral footprint, rarely found in the grand town houses of Notting Hill. At the far end of the flat, a modern kitchen with sleek, contemporary finishes enjoys a dual aspect looking up and across the road through tall sash windows. Beside this, a large, luminous living room complete with chimney breast and open bay window is the perfect spot to relax and to entertain. High ceilings throughout enhance the sense of space, flooding every corner with natural light. Both bedrooms, one a little larger than the other, offer comfort and practicality with good storage and quiet refuge behind their secondary glazing. The large shower room, sitting in the centre of the home is handsomely designed and very generous.

- Great ceiling heights
- Beside Portobello & Golborne Roads
- No onward chain
- Lateral space





Positioned just moments away from the eclectic mix of boutiques, restaurants, and the world-renowned market of Golborne Road and Portobello Road, this exceptional home enjoys enviable proximity to the buzz of West London. Ladbroke Grove station (Circle & Hammersmith & City lines) is also within easy reach, ensuring swift connections across the city.

Council Tax band: E

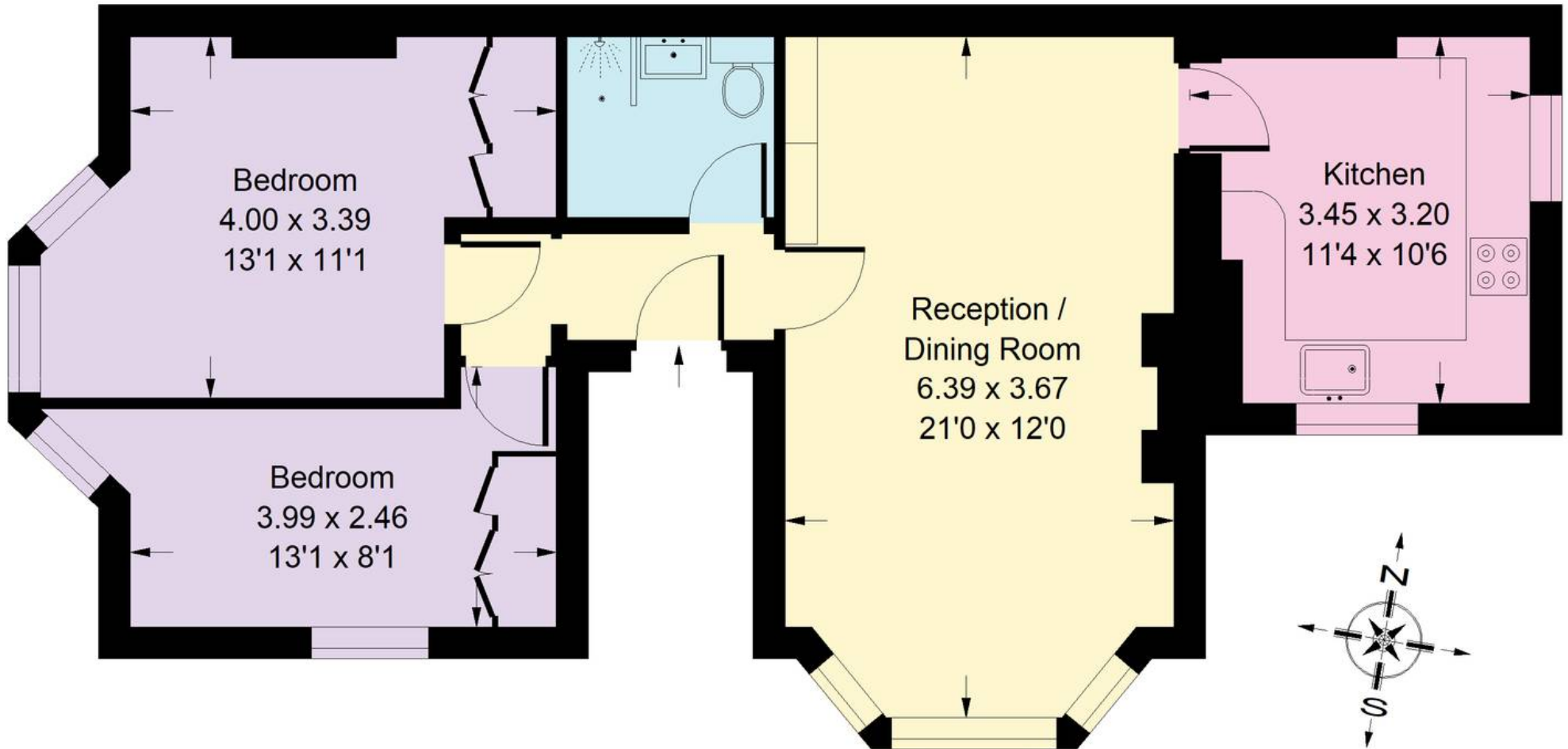
Tenure: Share of Freehold

EPC Energy Efficiency Rating: D

EPC Environmental Impact Rating: D

# Ladbroke Grove, W10

Approx. Gross Internal Area  
64 sq m / 689 sq ft



## Raised Ground Floor

Whilst every attempt has been made to ensure the accuracy of the floor plan, measurements are approximate and not to scale. No guarantee is given on the total square footage of the property quoted on the plan. Figures given are for guidance. Plan is for illustration purposes only, not to be used for valuations.



## Rigby & Marchant

115 Westbourne Studios 242 Acklam Road, London - W10 5JJ

020 7221 7210

[sales@rigbyandmarchant.co.uk](mailto:sales@rigbyandmarchant.co.uk)

[www.rigbyandmarchant.co.uk/](http://www.rigbyandmarchant.co.uk/)

