



Roland Gardens

South Kensington, SW7

£10,000 PCM

RIGBY & MARCHANT

Roland Gardens

South Kensington, SW7

A charming two bedroom apartment with plenty of character in a period mansion situated in the heart of South Kensington. This flat offers a large reception room, two beds, two baths and an office space in the annex-like layout. Additionally, an open-plan kitchen/living space with a sizeable utility room.

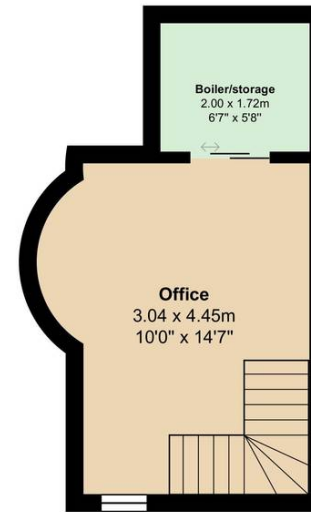
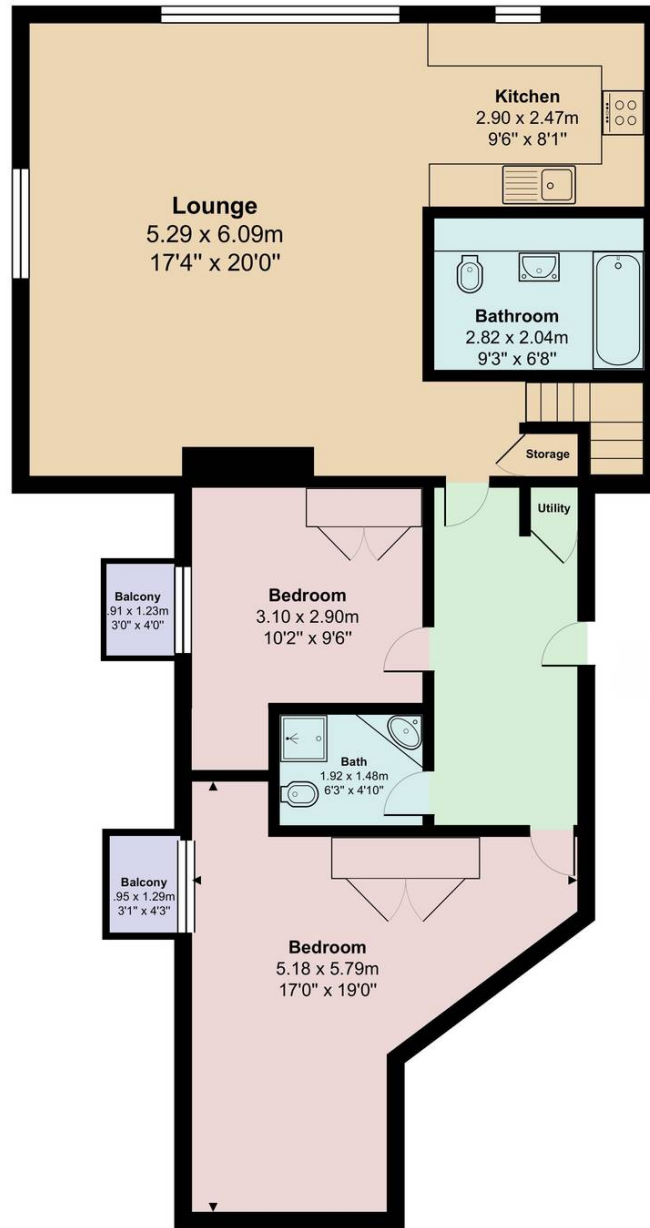
Council Tax band: G

Tenure: Leasehold

EPC Energy Efficiency Rating: E

EPC Environmental Impact Rating: E







Rigby & Marchant

Westbourne Studios

020 7221 7210

sales@rigbyandmarchant.co.uk

www.rigbyandmarchant.co.uk/

RIGBY &
MARCHANT