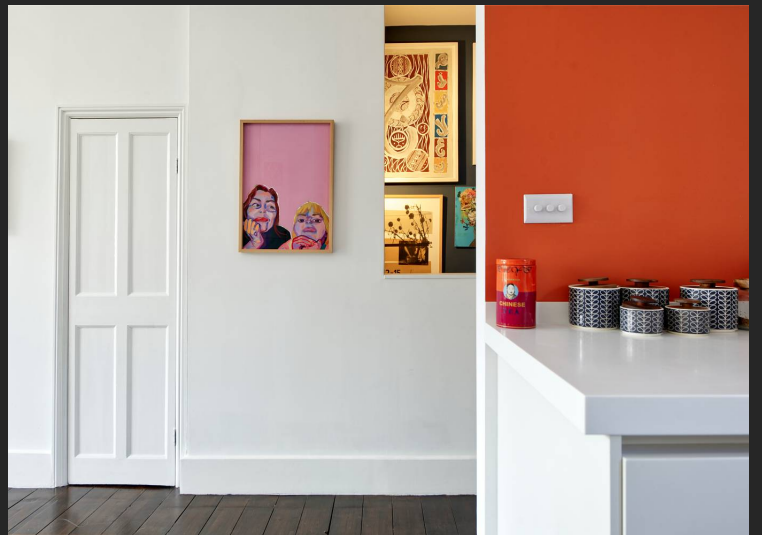




Oxford Gardens, North Kensington. W10







A spacious and light filled, 2 bedroom upper duplex flat within a handsome Edwardian terrace house in the heart of the St Quintin Conservation Area, North Kensington W10.

Beautifully presented the apartment offers bright, open plan kitchen and reception areas with lovely views to the rear over neighboring gardens. 2 generous bedrooms and a stylish shower room complete the accommodation. The split level layout works extremely well and provides the apartment a feeling of space and volume.

Oxford Gardens is a pretty tree lined street in the heart of the sought after St. Quintin conservation area. The local amenities of Portobello Road and Notting Hill are within easy reach and the area is covered by the Kensington and Chelsea residents parking scheme.

Council Tax band: E

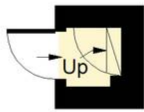
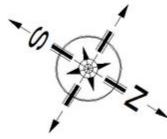
Tenure: Share of Freehold

EPC Energy Efficiency Rating: D

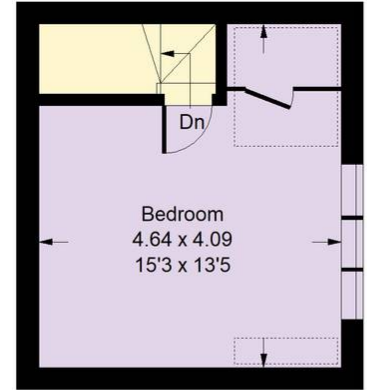
EPC Environmental Impact Rating: D

# Oxford Gardens, W10

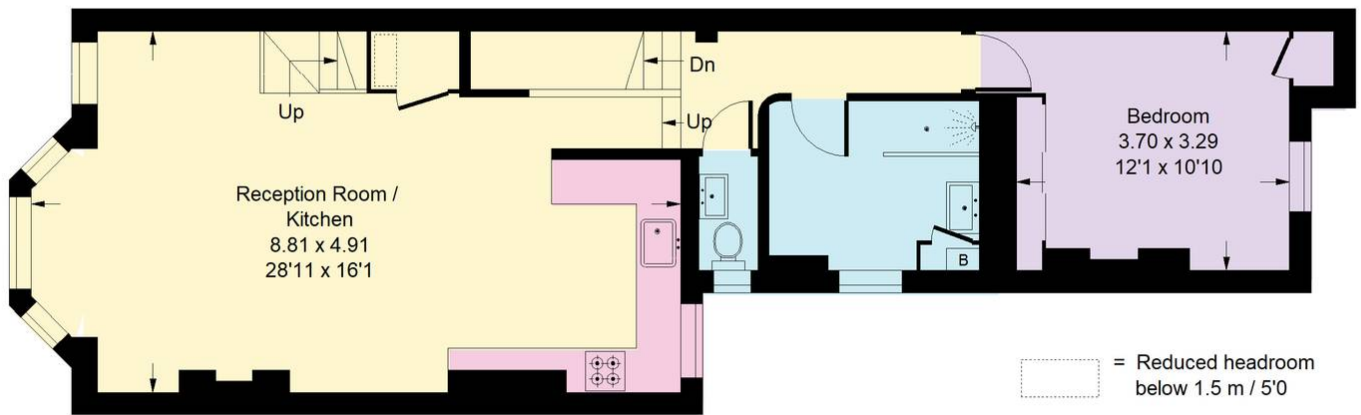
Approx. Gross Internal Area  
87.6 sq m / 943 sq ft



Ground Floor



Second Floor



First Floor

Whilst every attempt has been made to ensure the accuracy of the floor plan, measurements are approximate and not to scale.  
No guarantee is given on the total square footage of the property quoted on the plan. Figures given are for guidance.  
Plan is for illustration purposes only, not to be used for valuations.

