



# Westbourne Grove Mews

Notting Hill, W11



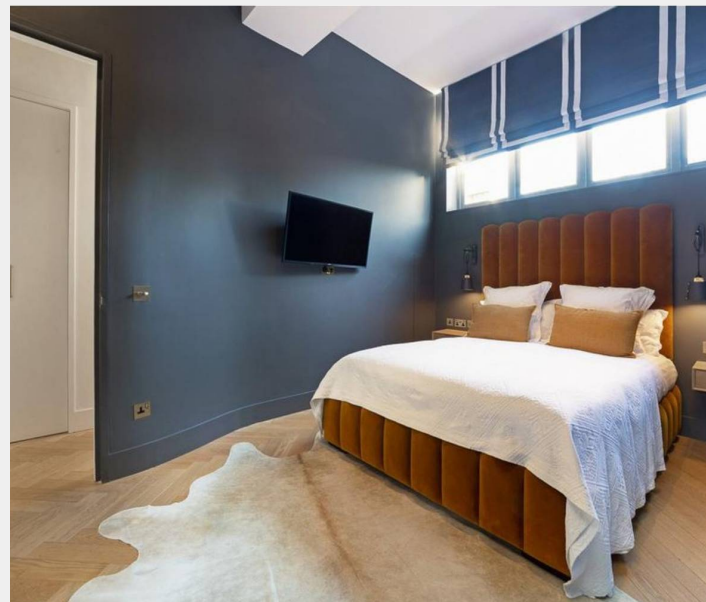
£13,650 pcm

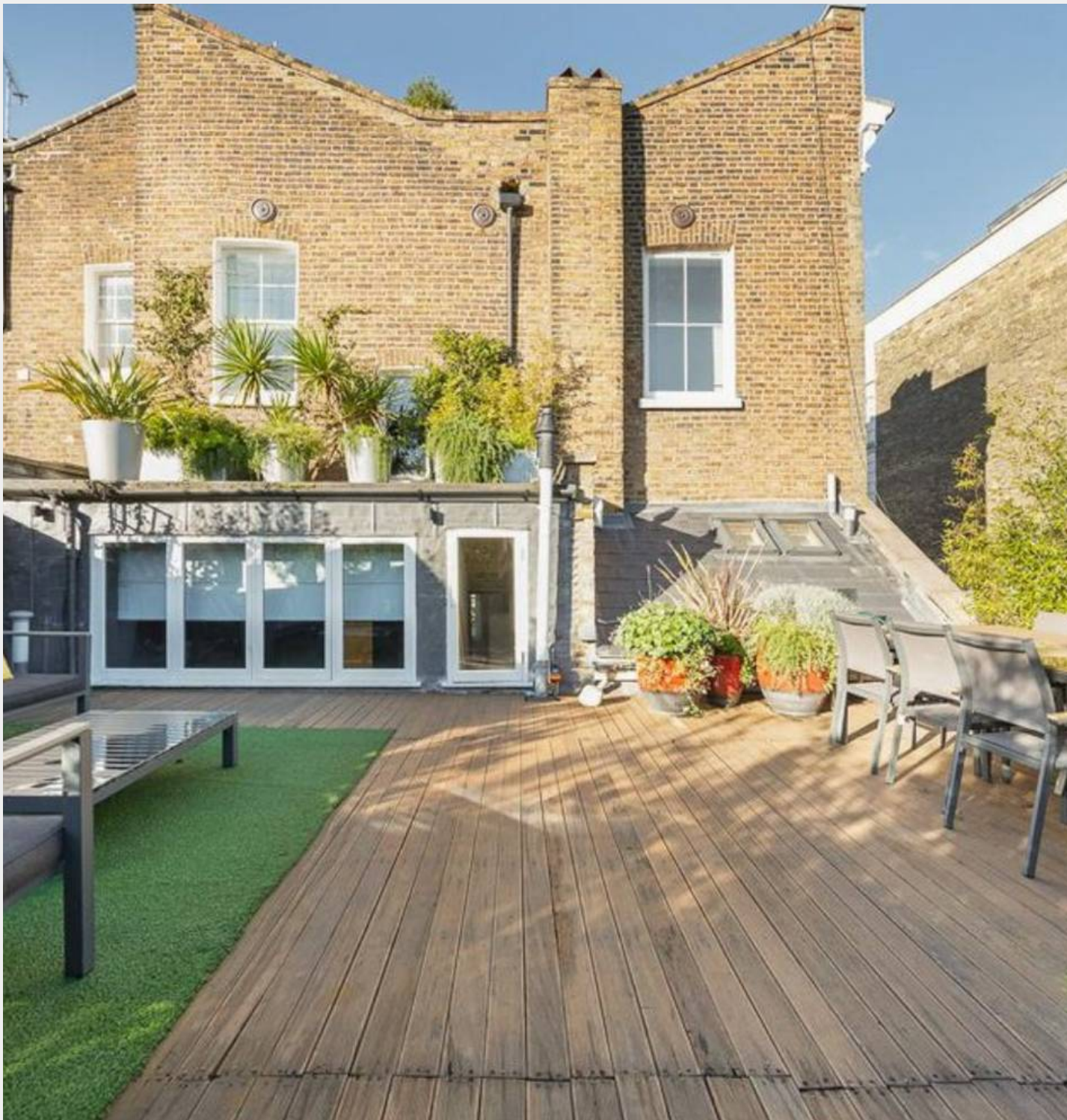
# Westbourne Grove Mews

Notting Hill, W11

Set on the first floor, this unique and striking two-bedroom apartment featuring contemporary interiors and eclectic furnishings is available to let in Notting Hill. Its large arch sash windows flood the open-plan reception and kitchen areas with natural light, accentuating the high ceilings, glossy parquet wooden floors and pops of bright and dark colours. This beautiful home also benefits from a vast outdoor patio.

- Luxury living
- Interior designed
- Roof terrace
- High ceilings





## Westbourne Grove Mews

Notting Hill, W11

Westbourne Grove Mews is located close to the many bars, boutiques and eateries found on Westbourne Grove and Portobello Road. The closest Underground stations are Notting Hill Gate and Bayswater (Central, Circle & District lines).



## Rigby & Marchant

115 Westbourne Studios 242 Acklam Road, London - W10 5JJ

020 7221 7210

[info@rigbyandmarchant.co.uk](mailto:info@rigbyandmarchant.co.uk)

[www.rigbyandmarchant.co.uk/](http://www.rigbyandmarchant.co.uk/)

