

St Mark's Place, Notting Hill, W11

£800,000

RIGBY & MARCHANT

# St Mark's Place

Notting Hill, W11

A cosy two bedroom apartment with garden space located on a charming residential street in the heart of Notting Hill.

The apartment, located on the ground floor, includes a large reception area, functional kitchen space and two sizeable bedrooms with one bathroom.

St Marks Road is a stunning, quiet, residential road in the heart of Notting Hill, situated a stone's throw away from Ladbroke Grove and Portobello Road.

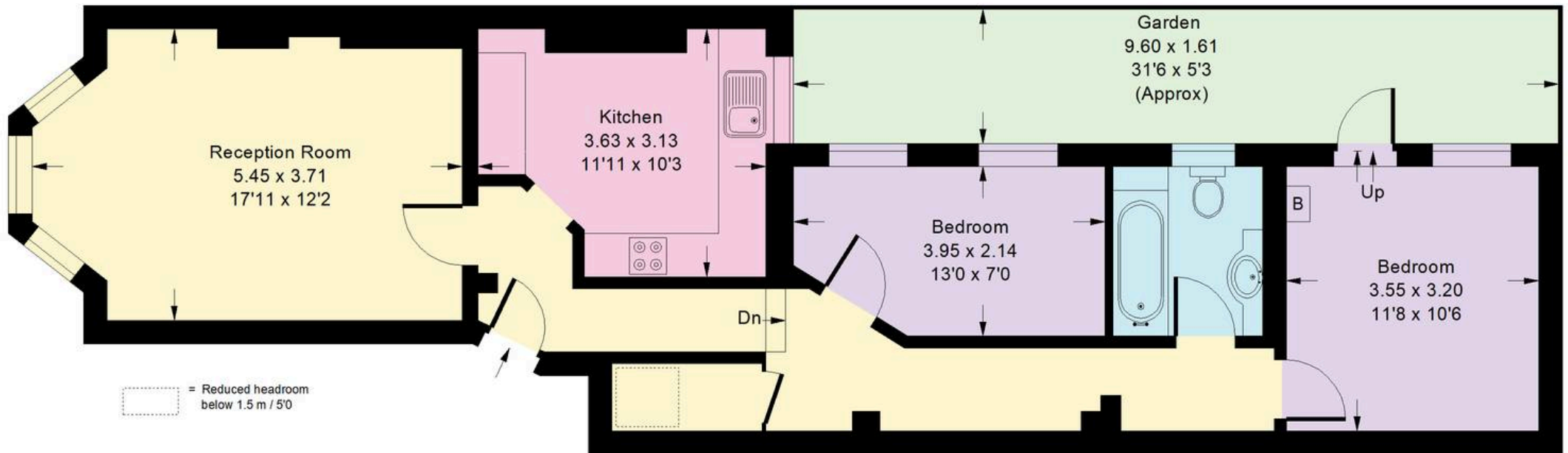
Council Tax band: E

Tenure: Share of Freehold



# St. Marks Place, W11

Approx. Gross Internal Area  
69.1 sq m / 744 sq ft



## Ground Floor

Whilst every attempt has been made to ensure the accuracy of the floor plan, measurements are approximate and not to scale.  
No guarantee is given on the total square footage of the property quoted on the plan. Figures given are for guidance.  
Plan is for illustration purposes only, not to be used for valuations.



## Rigby & Marchant

Westbourne Studios, London, W10

020 7221 7210

[sales@rigbyandmarchant.co.uk](mailto:sales@rigbyandmarchant.co.uk)

[www.rigbyandmarchant.co.uk/](http://www.rigbyandmarchant.co.uk/)

RIGBY &  
MARCHANT