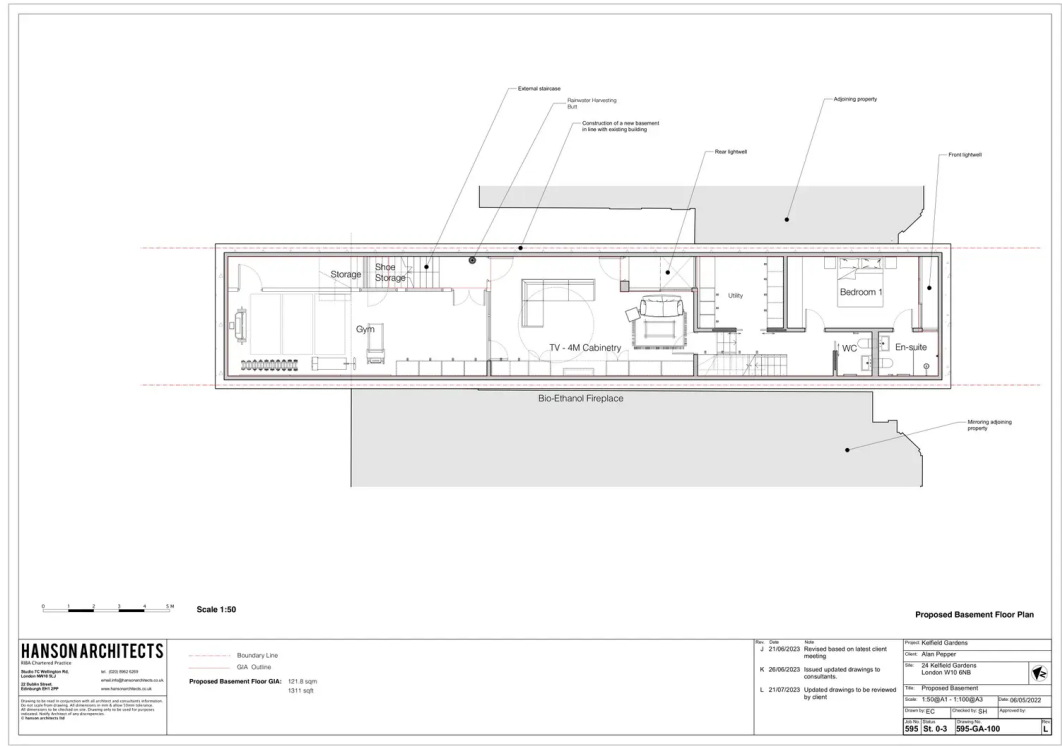
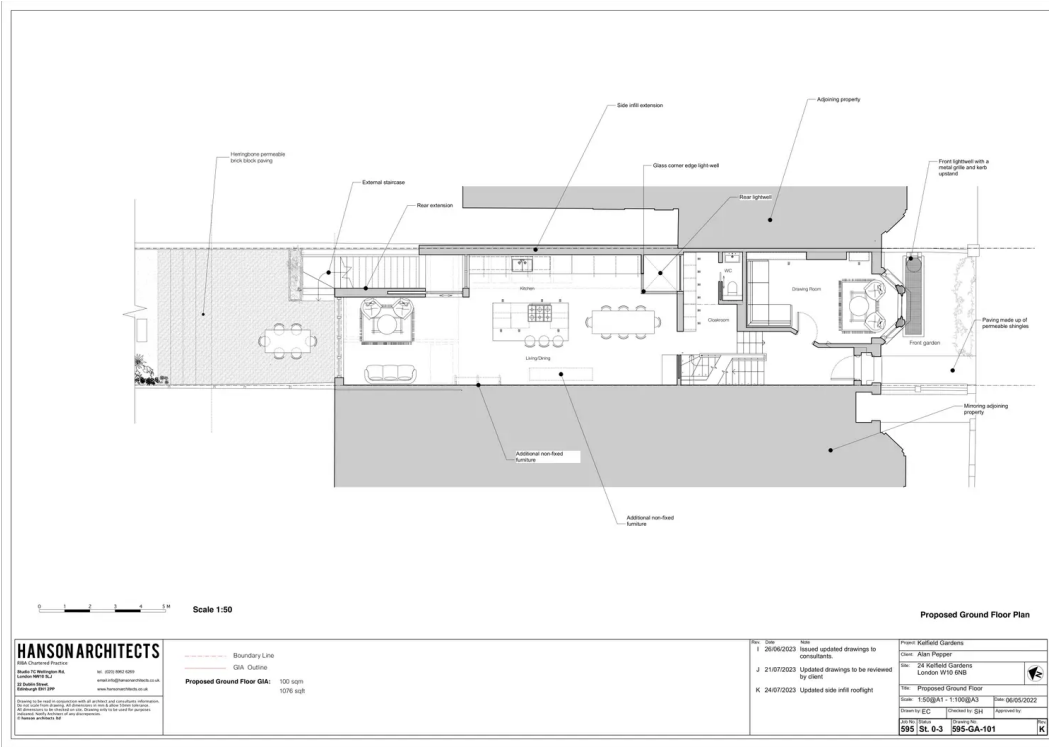
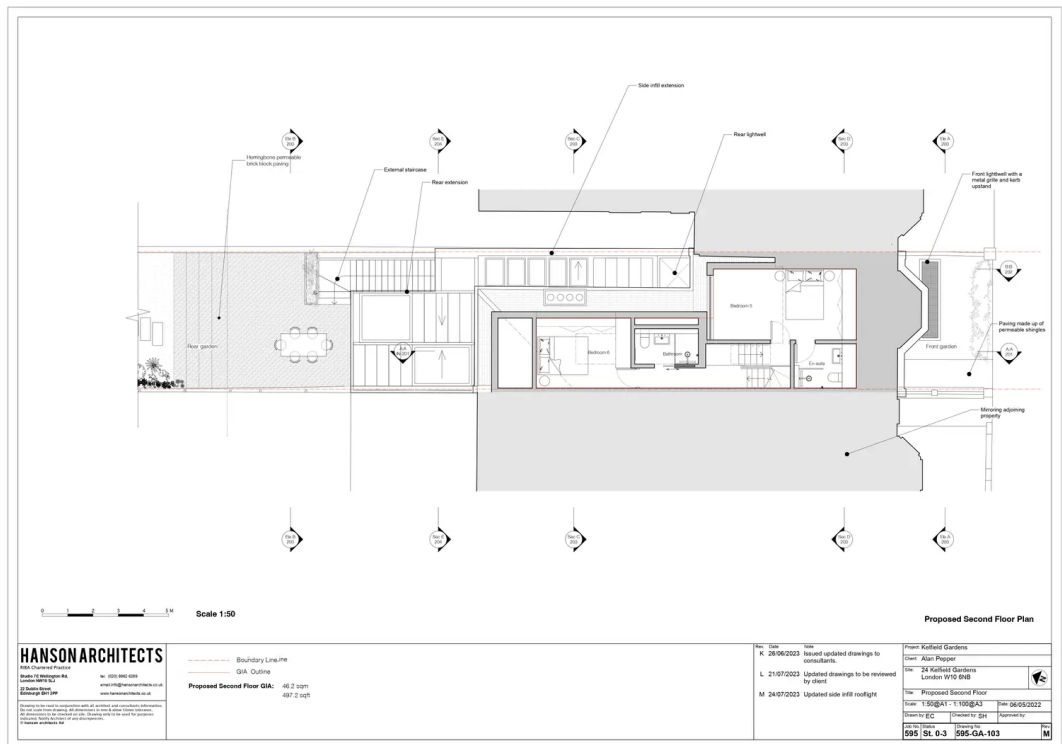
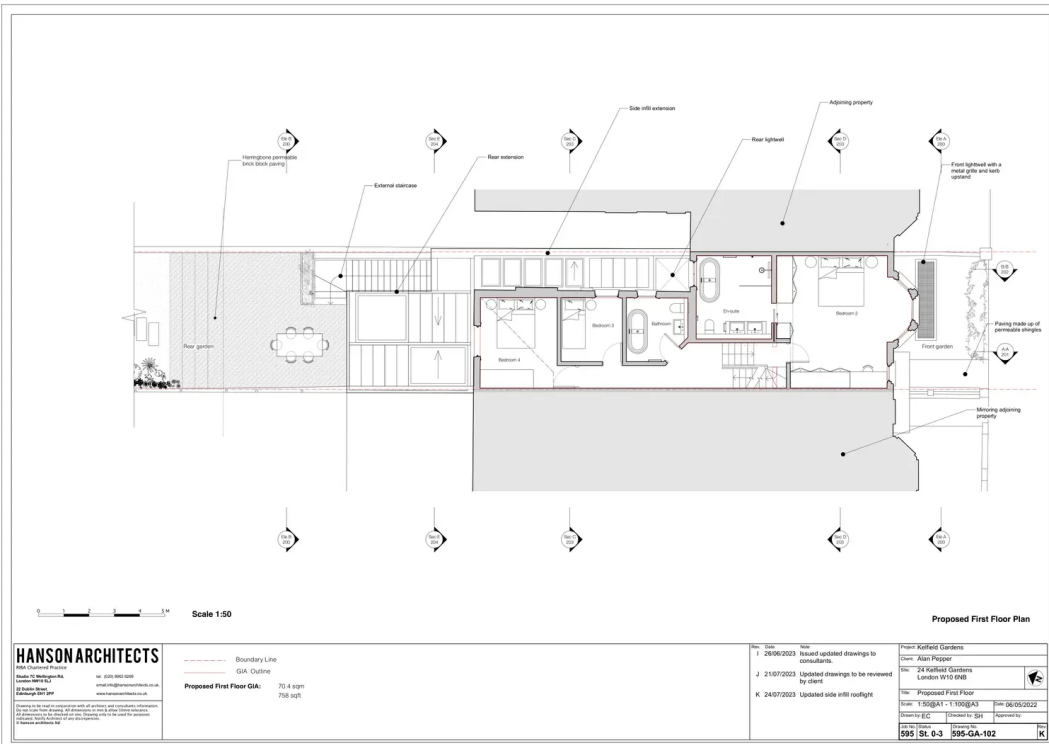


Kelfield Gardens,

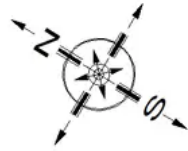
London, W10


£2,350,000

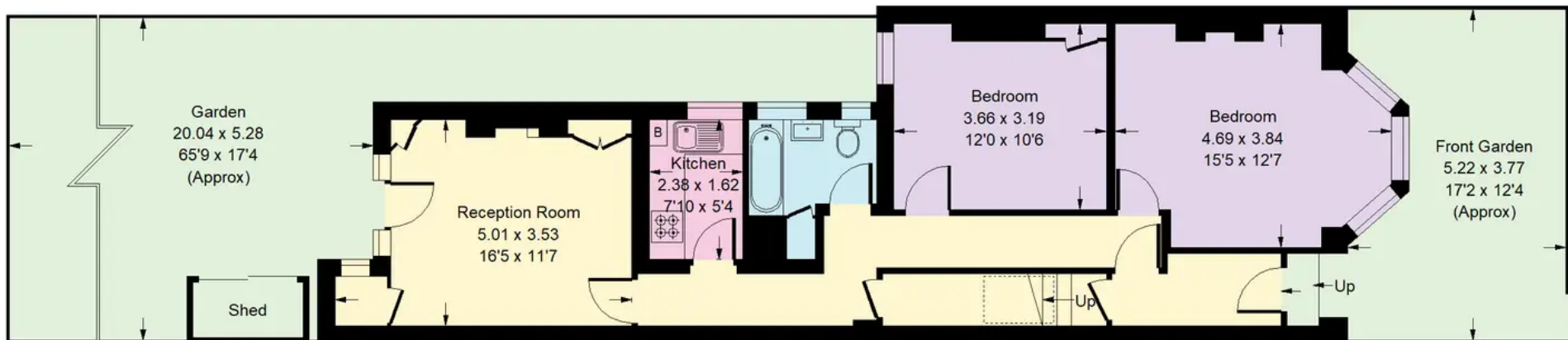
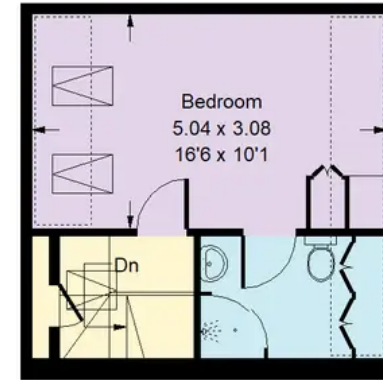


Kelfield Gardens, W10

Approx. Gross Internal Area
167.8 sq m / 1806 sq ft



 = Reduced headroom below 1.5 m / 5'0



Whilst every attempt has been made to ensure the accuracy of the floor plan, measurements are approximate and not to scale.
No guarantee is given on the total square footage of the property quoted on the plan. Figures given are for guidance.
Plan is for illustration purposes only, not to be used for valuations.



Kelfield Gardens

North Kensington, W10

A great opportunity to buy an exceptional Edwardian family house in need of modernisation on the preferred side of this sought after street, located in the heart of North Kensington, W10.



Rigby & Marchant

115 Westbourne Studios 242 Acklam Road, London - W10 5JJ

020 7221 7210 • sales@rigbyandmarchant.co.uk • www.rigbyandmarchant.co.uk/

