



# Campden House Court, Gloucester Walk

London, W8 4HU

£495,000

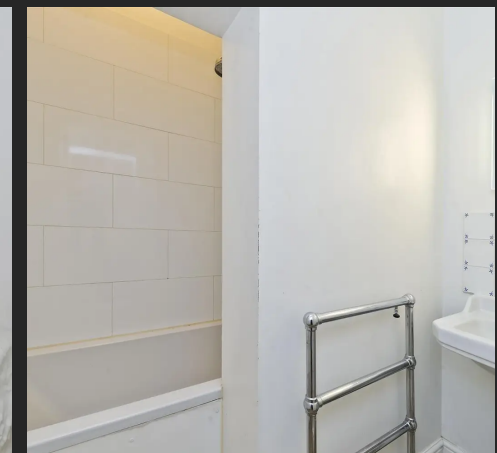
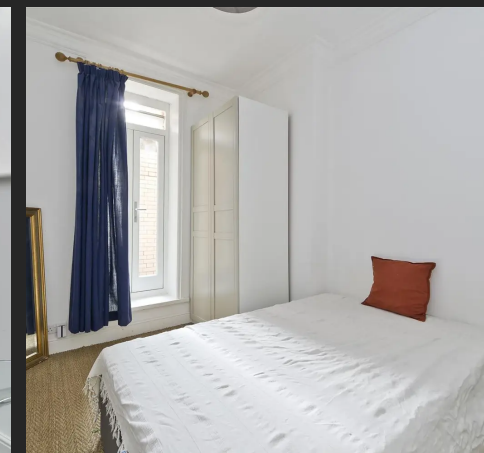
RIGBY & MARCHANT

## Campden House Court, London, W8 4HU

A charming one bedroom flat with great character that is situated in a period mansion block just off Kensington Church Street. The flat offers a good size reception room with open plan kitchen and access to a private, beautiful & extensive communal garden. Ideally located, the property has access to Notting Hill Gate Underground (Central, Circle & District lines) and Kensington High Street Underground (Circle & District lines) stations.

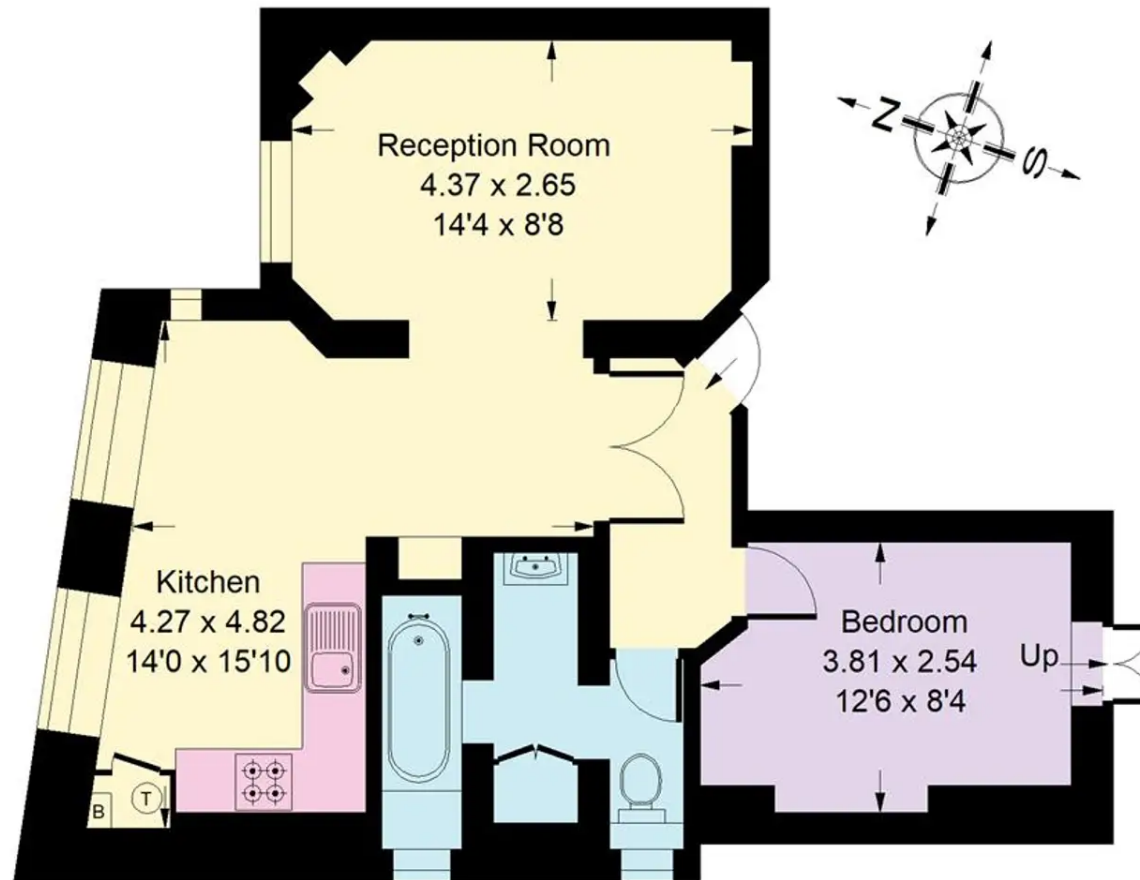
Council Tax band: E

Tenure: Leasehold



# Campden House Court, W8

Approx. Gross Internal Area  
46.5 sq m / 500 sq ft



## Lower Ground Floor

Whilst every attempt has been made to ensure the accuracy of the floor plan, measurements are approximate and not to scale.  
No guarantee is given on the total square footage of the property quoted on the plan. Figures given are for guidance.  
Plan is for illustration purposes only, not to be used for valuations.



## Rigby & Marchant

115 Westbourne Studios 242 Acklam Road, London - W10 5JJ

020 7221 7210

[sales@rigbyandmarchant.co.uk](mailto:sales@rigbyandmarchant.co.uk)

[www.rigbyandmarchant.co.uk/](http://www.rigbyandmarchant.co.uk/)

RIGBY &  
MARCHANT