



Highlever Road, North Kensington W10



£1,600,000



Highlever Road

North Kensington W10

A charming 3 bedroom terraced house in this popular corner of North Kensington W10, close to local parks.

The property has been opened up to create a light and spacious home with a huge ground floor kitchen/reception room opening onto a lovely rear garden. Upstairs are 3 generous double bedrooms and 3 shower / bathrooms.

- Open plan ground floor
- Private garden
- Close to local parks
- 3 double bedrooms





Highlever Road

Notrh Kensington W10

Highlever Road runs north off Oxford Gardens with this property being close to the junction of Barlby Road. Local parks are on your doorstep and shops are close by on Northpole Road. The underground stations at Ladbroke Grove, White City and Latimer Road are almost all equidistant. The area also benefits from Kensington & Chelsea residents parking.

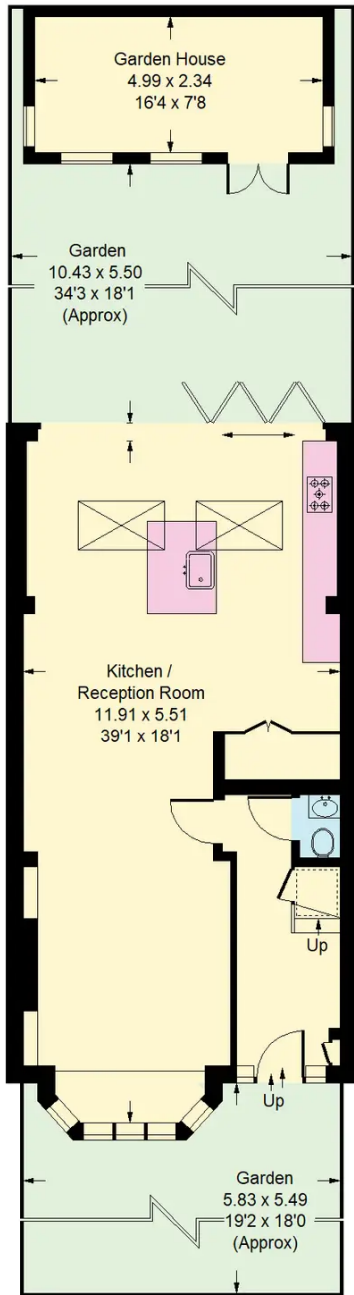
Tenure: Freehold

EPC Energy Efficiency Rating: D

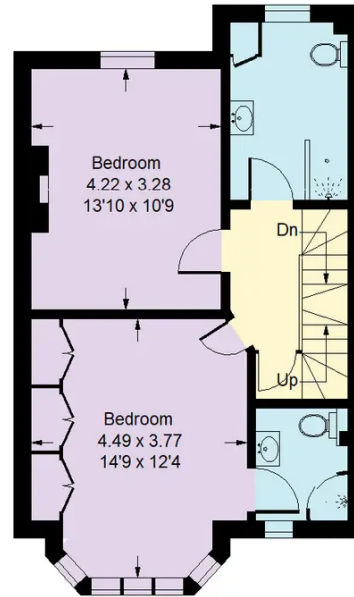
EPC Environmental Impact Rating: E

Highlever Road, W10

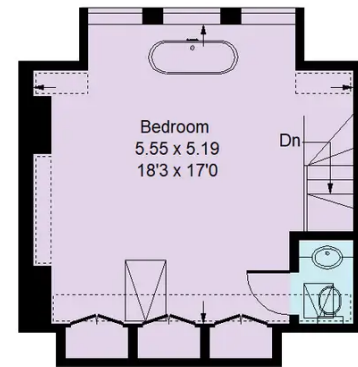
Approx. Gross Internal Area = 139.8 sq m / 1505 sq ft
 Garden House = 11.7 sq m / 126 sq ft
 Total = 151.5 sq m / 1631 sq ft



Ground Floor



First Floor



Second Floor



= Reduced headroom below 1.5 m / 5'0"

Whilst every attempt has been made to ensure the accuracy of the floor plan, measurements are approximate and not to scale.
 No guarantee is given on the total square footage of the property quoted on the plan. Figures given are for guidance.
 Plan is for illustration purposes only, not to be used for valuations.



Rigby & Marchant

Westbourne Studios, London - W10

020 7221 7210

sales@rigbyandmarchant.co.uk

www.rigbyandmarchant.co.uk/

