



Letchford Gardens, London NW10 6AN







This is a beautifully presented 5 bedroom house set over 4 floors with a large bright double reception room leading to a contemporary fully fitted kitchen. Doors lead onto a spacious paved patio garden and there is also a terrace on the top floor.

The property which was built in 2017, has a stunning master bedroom with en-suite bathroom, 4 further large double bedrooms and 3 bathrooms (1 en-suite). All of the fixtures and fittings in the bathrooms and kitchen are very high quality.

Letchford Gardens is located in College Park conveniently close to the shops and amenities on the Harrow Road with both Kensal Rise and Willesden Junction Train Stations (Bakerloo / London Overground) close by.

Council Tax band: F

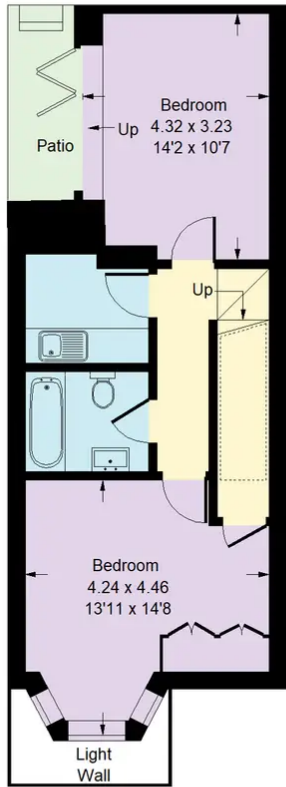
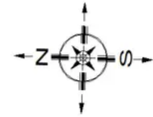
Tenure: Freehold

EPC Energy Efficiency Rating: B

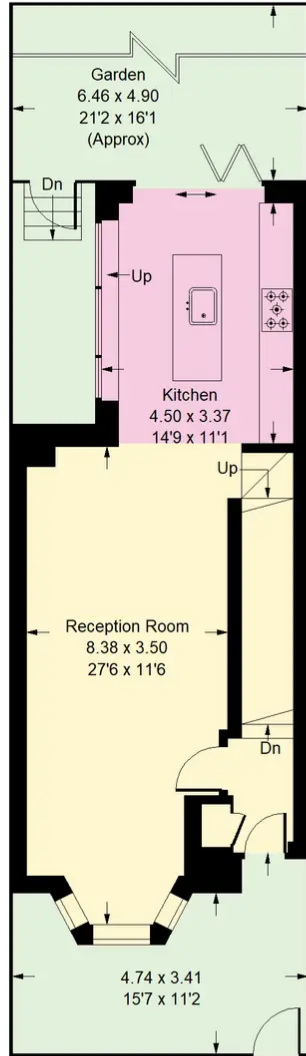
EPC Environmental Impact Rating: B

# Letchford Gardens, NW10

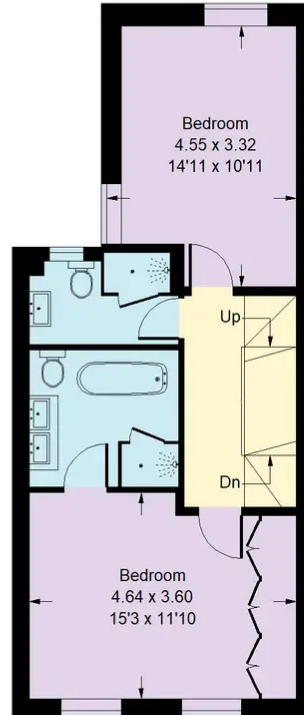
Approx Gross Internal Area  
 169.5 sq m / 1824 sq ft  
 (Including Eaves Storage 8.2 sq m / 88 sq ft)



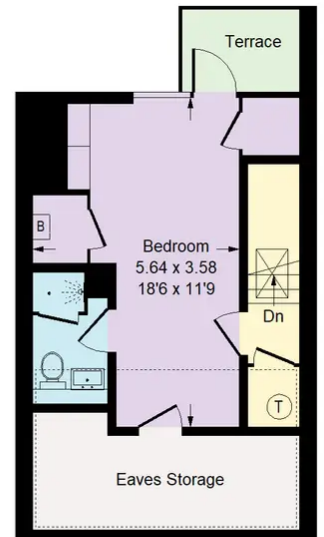
Lower Ground Floor



Ground Floor



First Floor



Second Floor

⊞ = Reduced headroom below 1.5 m / 5'0"

Whilst every attempt has been made to ensure the accuracy of the floor plan, measurements are approximate and not to scale. No guarantee is given on the total square footage of the property quoted on the plan. Figures given are for guidance. Plan is for illustration purposes only, not to be used for valuations.

