

St. Marks Road,

London, W10 6BZ

£1,680,000

St. Marks Road

London, W10 6BZ

Hidden away down a secure plant lined pathway, this 2 bed studio house is set back from St Marks Road and directly overlooks Kensington Memorial Park in W10. With windows on 3 sides, light floods into the contemporary, open plan ground floor comprising a vast reception room and kitchen leading onto a double height atrium with additional living space. On the first floor are two double bedrooms, one with en-suite and a family bathroom.

- 45ft reception
- 2 bedrooms
- Freehold
- 2 bathrooms



St. Marks Road

London, W10 6BZ

St Marks Road is a quiet street running north off Blenheim Crescent. Ladbroke Grove Underground station (Hammersmith & City) is within a short walk as are the local amenities of both Ladbroke Grove and Portobello Road. Council Tax band: G

Tenure: Freehold

EPC Energy Efficiency Rating: D

EPC Environmental Impact Rating: E

- 45ft reception
- 2 bedrooms
- Freehold
- 2 bathrooms



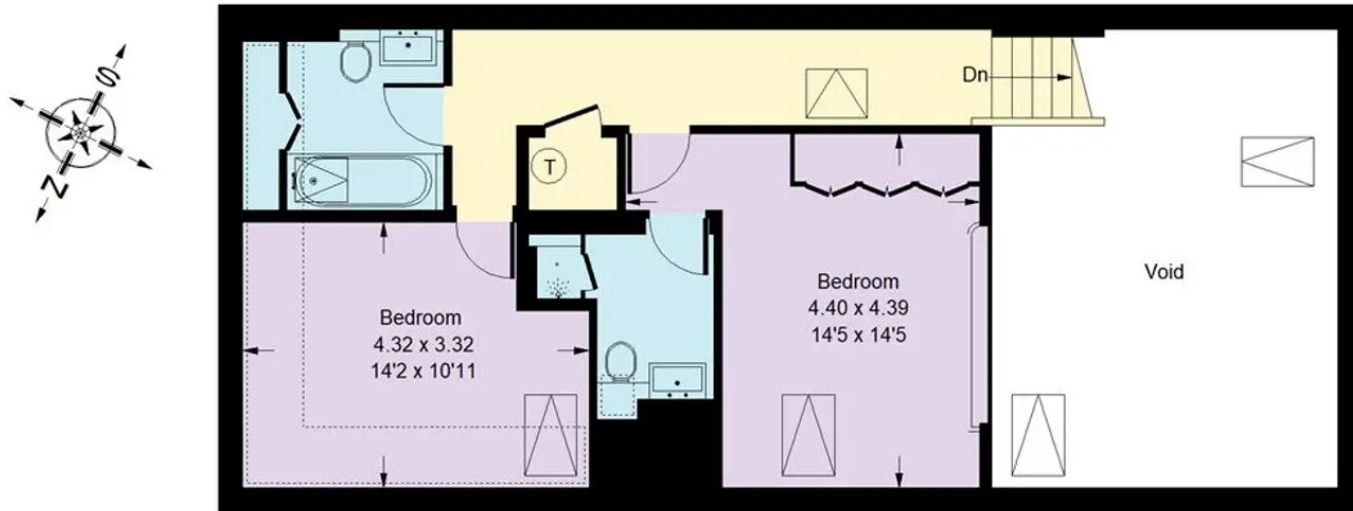




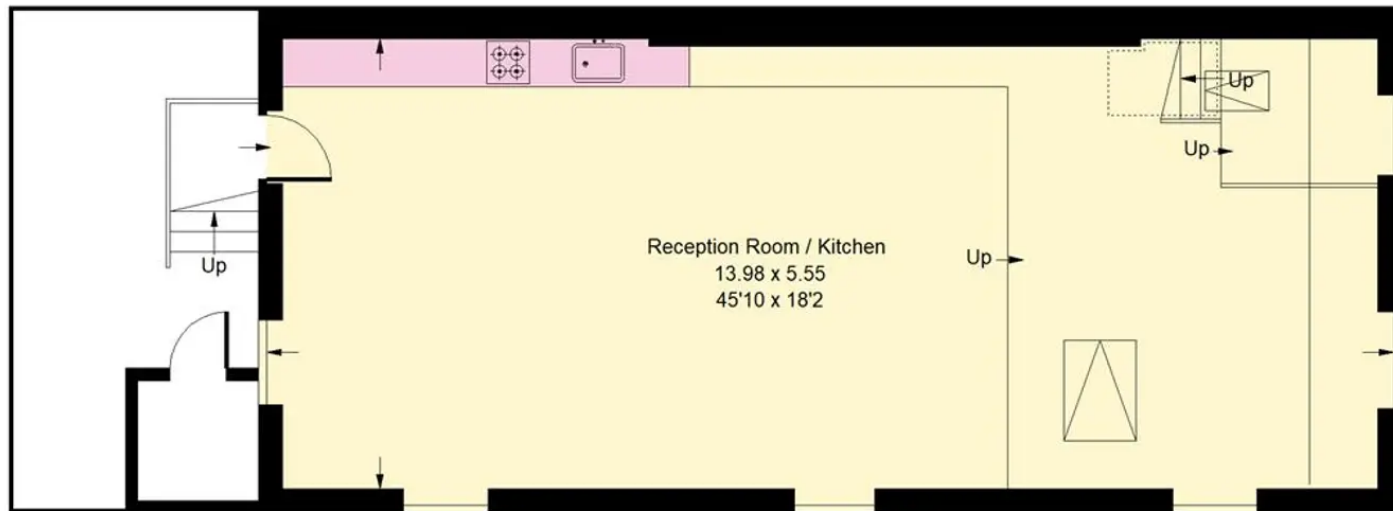


St. Marks Road, W10


Approx. Gross Internal Area = 132.1 sq m / 1422 sq ft
(Excluding Void)



First Floor



Ground Floor

 = Reduced headroom below 1.5 m / 5'0

Whilst every attempt has been made to ensure the accuracy of the floor plan, measurements are approximate and not to scale.
No guarantee is given on the total square footage of the property quoted on the plan. Figures given are for guidance.
Plan is for illustration purposes only, not to be used for valuations.



Rigby & Marchant

115 Westbourne Studios 242 Acklam Road, London - W10 5JJ

020 7221 7210

sales@rigbyandmarchant.co.uk

www.rigbyandmarchant.co.uk/

