



Bevington Road,
London, W10 5TL



£1,200,000



Bevington Road

A fantastic two double bedroom period duplex in the beating heart of Notting Hill, W10 For Sale.

A bit of a rough diamond, this superb opportunity could not be better located for this wanting to be close to the hubbub of the Portobello and Golborne Roads. A large reception at the front of the property overlooks the street below through two vast sash windows and a large eat in kitchen sits to the rear. Above you find two large double bedrooms and a generous bathroom. The property is in need of some investment at this time but provides a rare opportunity to create a very special flat in the most enviable of locations.

- Development potential
- Amazing location
- Period Property
- 2 double bedrooms





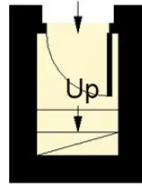
The property is situated ideally behind the Portobello and Golborne Roads with their associated markets, providing a lifestyle like no other in London. Ladbroke Grove, Westbourne Park and Notting Hill Tube are all within a short walking distance.

Council Tax band: E

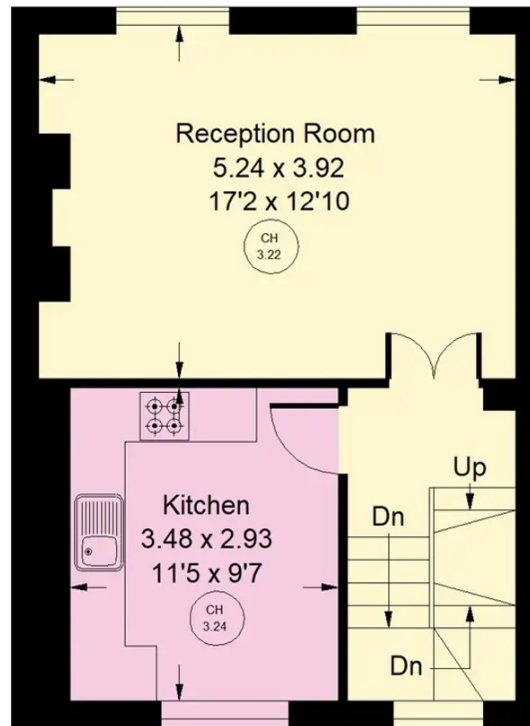
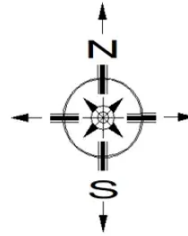
Tenure: Leasehold

Bevington Road, W10

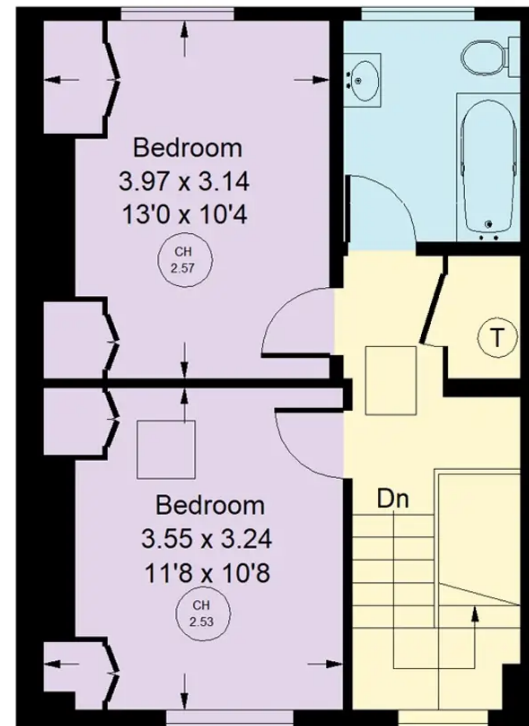
Approx. Gross Internal Area
80 sq m / 861 sq ft



Ground Floor



First Floor



Second Floor

Whilst every attempt has been made to ensure the accuracy of the floor plan, measurements are approximate and not to scale.
No guarantee is given on the total square footage of the property quoted on the plan. Figures given are for guidance.
Plan is for illustration purposes only, not to be used for valuations.



Rigby & Marchant

115 Westbourne Studios 242 Acklam Road, London - W10 5JJ

020 7221 7210

sales@rigbyandmarchant.co.uk

www.rigbyandmarchant.co.uk/

