

Westbourne Park Villas, London

£2,000,000

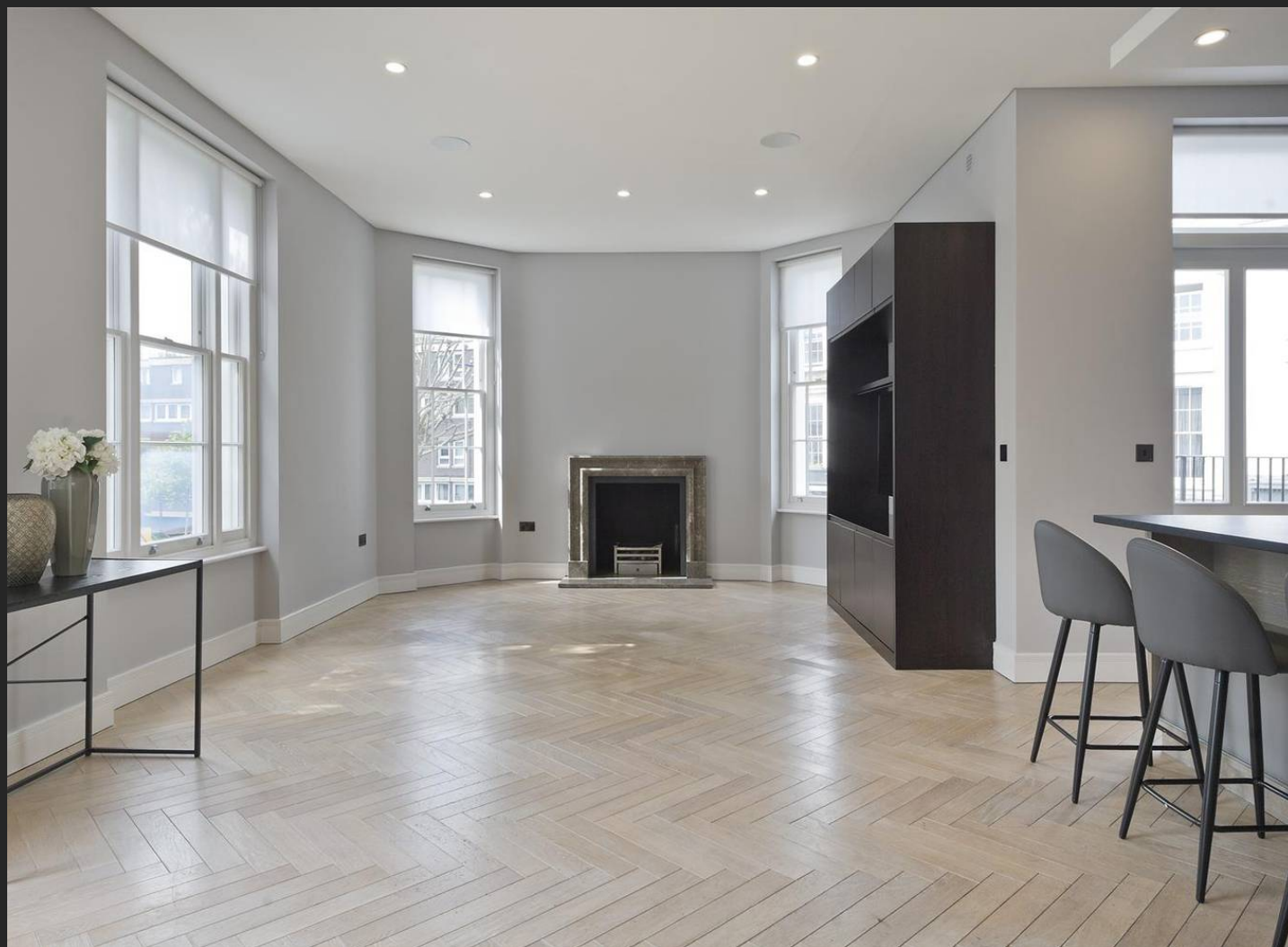
London

RIGBY & MARCHANT

A striking first and second floor 2 bedroom, 2 bath, duplex apartment with terrace, in a commanding corner position on Westbourne Park Road and Westbourne Park Villas from award winning property developer Fruition Properties. Entered via the property's private entrance, the living spaces have been designed to an exceptionally high standard, embracing luxurious contemporary living. The first floor's large reception area with dual aspect embodies modern interiors with traditional style stone fireplaces, whilst the fully-fitted bespoke Roundhouse kitchen is sure to impress even the most discerning of cooks. The floating timber and glass staircase links the floors and both bedrooms are generously proportioned, including generous wardrobes and en-suite with details such as frameless glass shower enclosures and herringbone tiled panels to bathrooms.

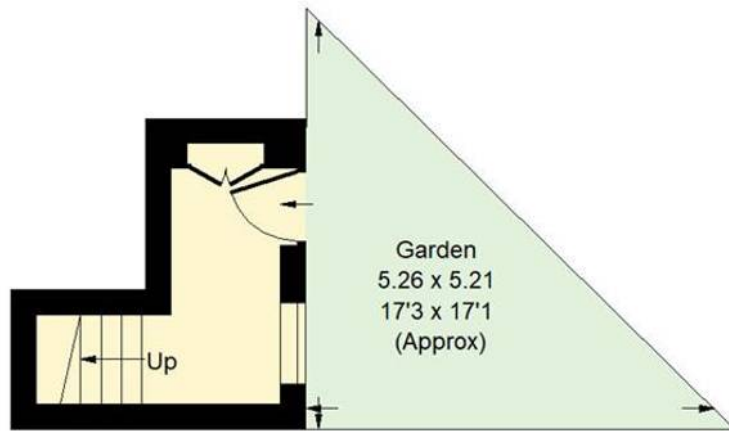
Westbourne Park Villas is located in the heart of Notting Hill, one of London's most desirable locations. Idyllic streetscapes and the buzz of Westbourne Grove is a stone's throw away. This area has grown to be one of London's most stylish districts - an area awash with outstanding restaurants and retailers revealing a "who's who" of fashion boutiques on your doorstep.

Tenure: Leasehold

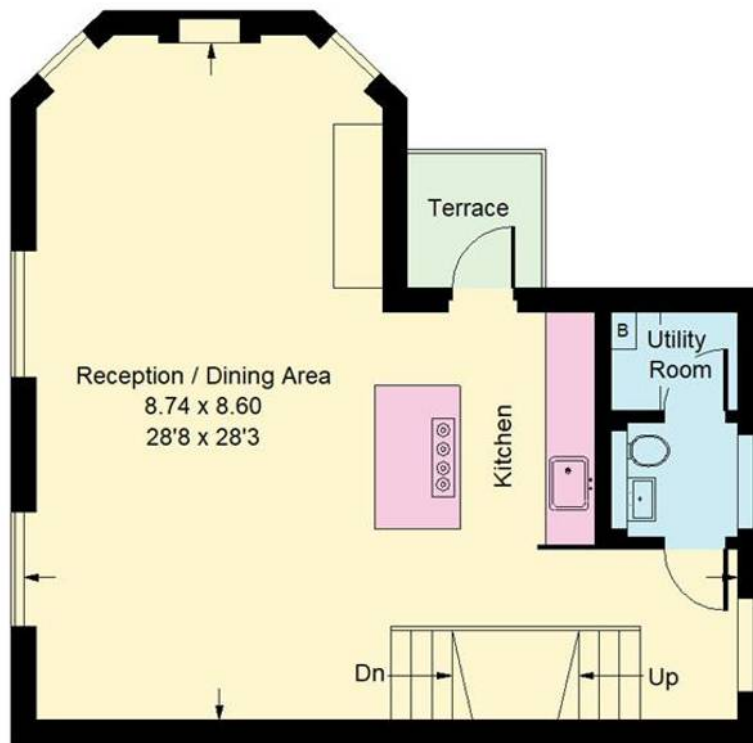


Westbourne Park Road, W2

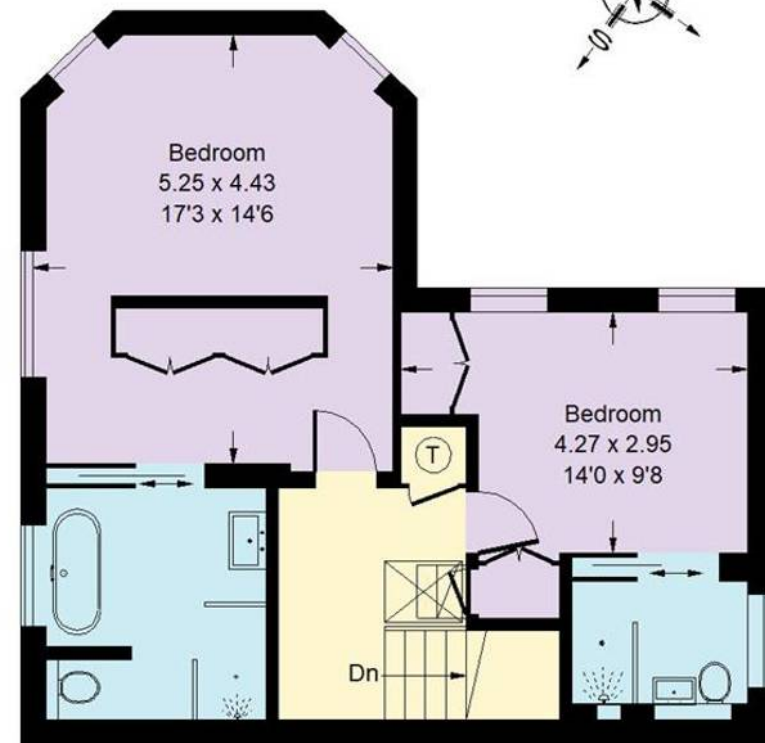
Approx. Gross Internal Area
121.2 sq m / 1304 sq ft



Ground Floor



First Floor



Second Floor



Whilst every attempt has been made to ensure the accuracy of the floor plan, measurements are approximate and not to scale.
No guarantee is given on the total square footage of the property quoted on the plan. Figures given are for guidance.
Plan is for illustration purposes only, not to be used for valuations.



Rigby & Marchant

Westbourne Studio, London - W10 5JJ

020 7221 7210

sales@rigbyandmarchant.co.uk

www.rigbyandmarchant.co.uk/

**RIGBY &
MARCHANT**