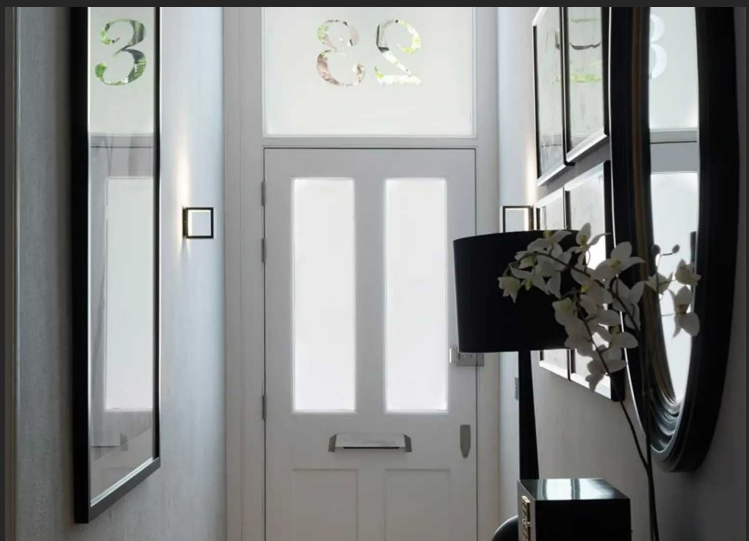




Kensington Gardens Square, London. W2 4BE







With its own private entrance, this stylish 3 bedroom maisonette in a Grade II Listed development, is set on one of London's sought-after garden squares, offering a luxurious escape from the hustle and bustle of London life. Originally built as a private residence in 1858 by Henry de Bruno Austin, the Grade II listed property has been meticulously restored or replicated where necessary by award winning developer Fruition Properties, to the highest level of craftsmanship, including striking arched windows, staircase balustrades, intricate cornicing, ceiling roses and original fireplaces. 22 Kensington Gardens Square is perfectly located to embrace all that Bayswater and Notting Hill have to offer, and with three Underground stations within walking distance, all of London is at your beck and call. For shopping and fine dining, Bond Street and Oxford Circus stations are just 4 and 6 minutes away by tube respectively. For commuters, Bank and Liverpool Street are accessible in 14 and 17 minutes on the Central Line.

Kensington Gardens Square is perfectly located to embrace all that Bayswater and Notting Hill have to offer, and with three Underground stations within walking distance, all of London is at your beck and call. For shopping and fine dining, Bond Street and Oxford Circus stations are just 4 and 6 minutes away by tube respectively. For commuters, Bank and Liverpool Street are accessible in 14 and 17 minutes on the Central Line.

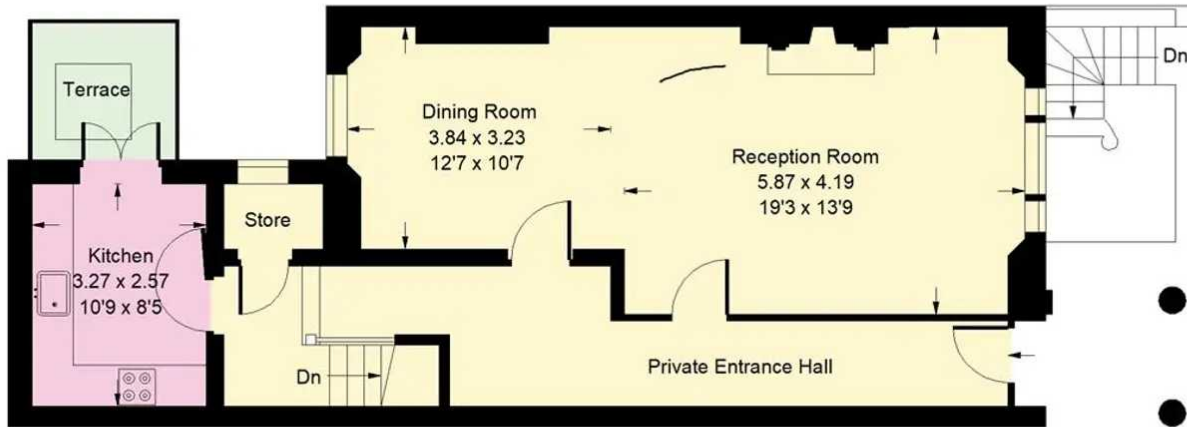
Tenure: Share of Freehold

EPC Energy Efficiency Rating: C

EPC Environmental Impact Rating: D

Kensington Gardens Square, W2

Approx. Gross Internal Area
152 sq m / 1636 sq ft



Ground Floor



Lower Ground Floor

Whilst every attempt has been made to ensure the accuracy of the floor plan, measurements are approximate and not to scale.
No guarantee is given on the total square footage of the property quoted on the plan. Figures given are for guidance.
Plan is for illustration purposes only, not to be used for valuations.

