

A photograph of a luxurious living room. In the foreground on the left, a black grand piano is partially visible. The room features a dark wood parquet floor, white walls with decorative crown molding, and a white door. In the center, a blue sofa with colorful cushions sits on a red patterned rug. To the right, a dark blue fireplace is topped with a large gold-framed portrait and a bookshelf. A teal armchair is positioned near the fireplace. A bay window in the background offers a view of the outdoors. The lighting is a mix of natural light from the window and several pendant lights hanging from the ceiling.

RIGBY & MARCHANT

Dalgarno Gardens, North Kensington W10

£3,000,000



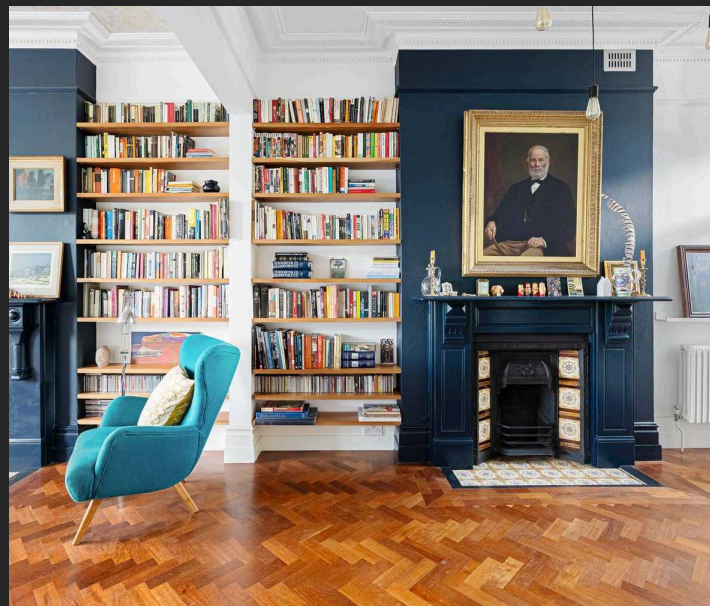


## Dalgarno Gardens

North Kensington, W10

A substantial 6 bedroom Victorian family house with southerly garden in an enviable location; opposite the largest park in North Kensington, W10.

This utterly charming property has been sympathetically modernised with the original features preserved and there is now a rare opportunity for a new family to own one of the most sought after houses in the area. Directly opposite the green open spaces of Little Wormwood Scrubs, ever popular with locals, children and dog walkers, this wonderful house enjoys glorious views and a level of privacy rarely found in London. The rooms are spacious and beautifully decorated with a charming double reception room, large south facing family kitchen opening on to the south facing garden, 6 generous bedrooms and 2 bathrooms.





# Dalgarno Gardens

Dalgarno Gardens is perfectly located opposite the entrance to Little Wormwood Scrubs and well positioned for Westfield leisure and shopping complex, as well as Central line at White City and Hammersmith & City lines at Wood Lane underground station. As the house is in the Royal Borough of Kensington and Chelsea it also benefits from the all-important RBK&C parking permit.

Council Tax band: G

Tenure: Freehold

- Stunning views over park
- 6 bedrooms
- Double reception room
- Large 200 sq ft loft with velux windows















# Dalgarno Gardens, London, W10

RIGBY & MARCHANT



Approximate Gross Internal Area  
227.4 sq m / 2447 sq ft

This plan is for layout guidance only. Not drawn to scale unless stated. Windows and door openings are approximate. Whilst every care is taken in the preparation of this plan, please check all dimensions, shapes and compass bearings before making any decisions reliant upon them. (ID1032676)





## Rigby & Marchant

115 Westbourne Studios 242 Acklam Road, London - W10 5JJ

020 7221 7210

[sales@rigbyandmarchant.co.uk](mailto:sales@rigbyandmarchant.co.uk)

[www.rigbyandmarchant.co.uk/](http://www.rigbyandmarchant.co.uk/)

**RIGBY &  
MARCHANT**