



Portobello Road,

London, W10 5SA



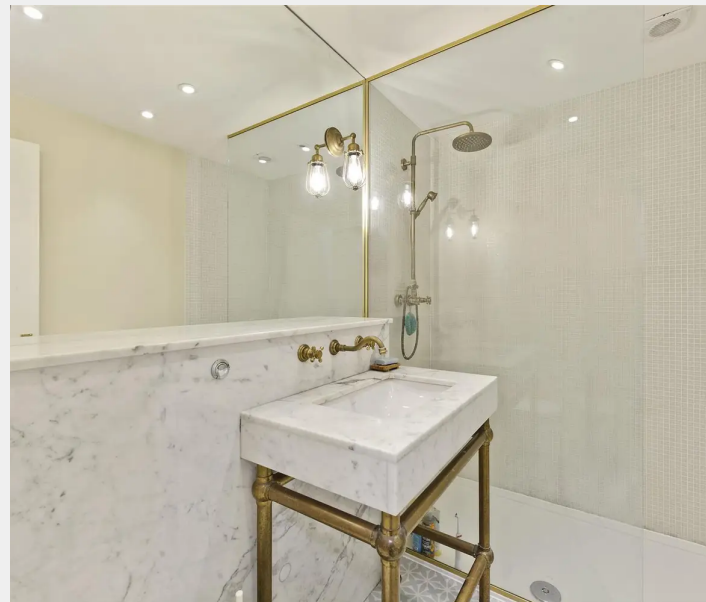
£600,000



Portobello Road, London, W10 5SA

Nestled amidst the illustrious Portobello Road in North Kensington W10, lies a quaint and alluring first floor 2 bed apartment, exuding a charm that's hard to miss. As you step inside, the luminous rooms are sure to enthrall you, with the open plan reception room and kitchen taking centre stage. Two magnificent sash windows adorn this space, lending an alluring view of this tranquil stretch of Portobello. As you venture further, you will be captivated by the master bedroom, replete with generous built-in cupboards. Both bedrooms are located at the rear of the building, sheltered from any street noise. The stylish shower room is an oasis of calm, boasting a large walk-in shower that is sure to rejuvenate your senses. This apartment is a true gem, radiating an irresistible charisma that is sure to captivate your heart.

- On Portobello Road
- Great cafes & restaurants
- High ceilings
- Beautifully appointed





Portobello Road, London, W10 5SA

Located in one of London's most sought-after neighbourhoods, this property, set in a quiet location away from the market, is just moments away from the vibrant and eclectic atmosphere of Portobello and Golborne Road, boasting an array of artisanal cafes, boutiques, and restaurants. Not to mention, excellent transport links offer quick and easy access to the rest of the city.

Council Tax band: B

Tenure: Leasehold

EPC Energy Efficiency Rating: E

EPC Environmental Impact Rating: E

Portobello Road, W10

Approx. Gross Internal Area
47.3 sq m / 509 sq ft



First Floor

Whilst every attempt has been made to ensure the accuracy of the floor plan, measurements are approximate and not to scale.
No guarantee is given on the total square footage of the property quoted on the plan. Figures given are for guidance.
Plan is for illustration purposes only, not to be used for valuations.



Rigby & Marchant

115 Westbourne Studios 242 Acklam Road, London - W10 5JJ

020 7221 7210

sales@rigbyandmarchant.co.uk

www.rigbyandmarchant.co.uk/

