



Dalgarno Gardens,

London

£2,750,000





## Dalgarno Gardens

London, W10 6AD

A substantial four bedroom family house with southerly garden in an enviable location; opposite the largest park in North Kensington, W10.

This utterly charming Victorian property has been home to the same family for over forty years and there is now a rare opportunity for a new family to own one of the most sought after houses in the area. Laid out over 3 main floors with a large attic conversion, there is scope for further extensions at the rear (subject to planning approval). Directly opposite the green open spaces of Little Wormwood Scrubs, ever popular with locals and dog walkers, this wonderful house enjoys glorious views and a level of privacy rarely found in London.

- South facing garden
- Park views
- Development potential
- First floor reception





# Dalgarno Gardens

London, W10 6AD

Dalgarno Gardens is well positioned for Westfield leisure and shopping complex, as well as Central and Hammersmith & City Lines at White City underground station. As the house is in the Royal Borough of Kensington and Chelsea it also benefits from the all-important RBK&C parking permit.

Council Tax band: G

Tenure: Freehold

EPC Energy Efficiency Rating: D

EPC Environmental Impact Rating: G

- South facing garden
- Park views
- Development potential
- First floor reception











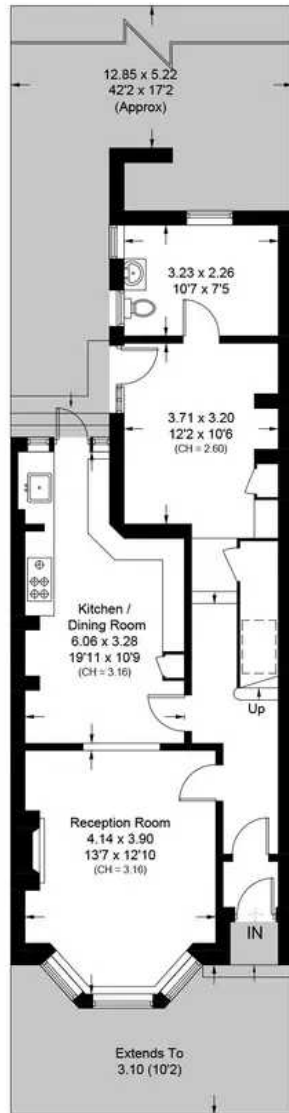




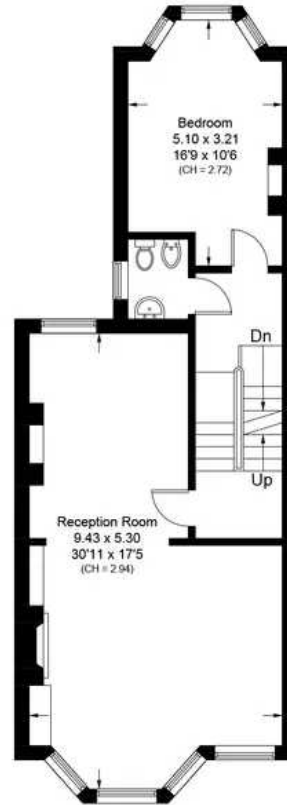
# Dalgarno Gardens, W10

Approximate Area = 237 sq m / 2551 sq ft

Including Limited Use Area / Eaves Storage (21.9 sq m / 236 sq ft)



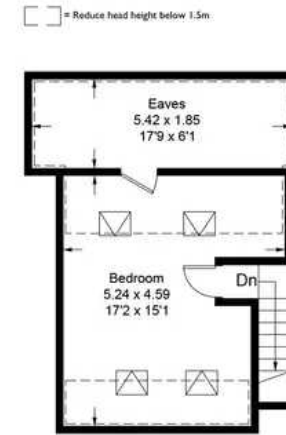
Ground Floor



First Floor



Second Floor



Third Floor

Surveyed and drawn in accordance with the International property measurements standards (IPMS 2: Residential) Not drawn to scale unless stated. Whilst every care is taken in the preparation of this plan, please check all dimensions, shapes and compass bearings before making any decisions reliant upon them.





## Rigby & Marchant

115 Westbourne Studios 242 Acklam Road, London - W10 5JJ

020 7221 7210

[sales@rigbyandmarchant.co.uk](mailto:sales@rigbyandmarchant.co.uk)

[www.rigbyandmarchant.co.uk/](http://www.rigbyandmarchant.co.uk/)

