

London HA2 - 51 Station Road, North Harrow HA2 7SR
Offices to Rent



BLUE ALPINE

PROPERTY INVESTMENT & DEVELOPMENT



London HA2 - 51 Station Road, North Harrow HA2 7SR

Offices to Rent



Property Features:

- Comprises office accommodation arranged over first and second floor
- Refurbished to a high standard with electric heaters, double glazing windows and phone entry system for each office
- VAT is NOT applicable to this property
- Total area size 90 sq m (968 sq ft)
- Flexible terms to fit your needs
- Available immediately on a new lease with terms to be agreed by negotiation
- Located next to North Harrow underground station, which is on Metropolitan Line and provides direct services to London Liverpool Street.
- Occupiers nearby including Costa Coffee, Best-One convenience store, Pharmacy, Café, Hair Salon and more.



London HA2 - 51 Station Road, North Harrow HA2 7SR

Offices to Rent



Property Description:

Comprises self-contained office accommodation at first and second floor, providing the following accommodation and dimensions:

First Floor:

Meeting Room - 5.10 sq m (55 sq ft)

Office Room 1 - 22.65 sq m (244 sq ft)

Office Room 2 - 14.42 sq m (155 sq ft)

Kitchenette - 2.84 sq m (31 sq ft)

WC

Second Floor:

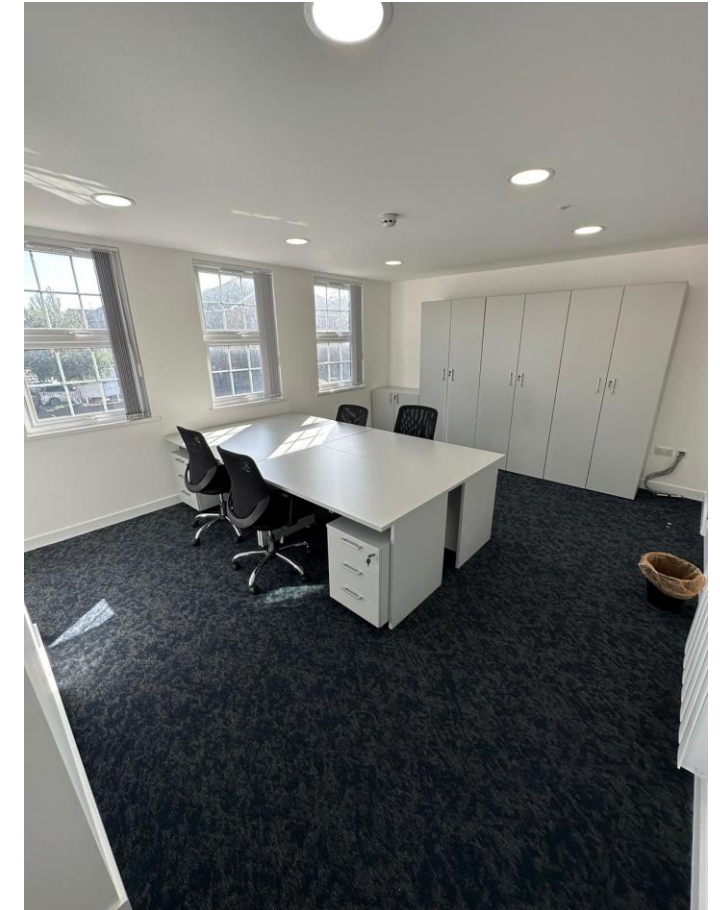
Office Room 3 - 22.88 sq m (246 sq ft)

Office Room 4 - 14.94 sq m (161 sq ft)

WC



Office 1 – First Floor



Office 2 – First Floor

London HA2 - 51 Station Road, North Harrow HA2 7SR

Offices to Rent



Terms:

Available on a new lease with terms to be agreed by negotiation

Rent: £480.77 per week (PCM: £2,083.33)

Deposit: £6,250 (3 Months)

Rateable Value:

Rateable Value - £9,500 p.a.

Rates Payable - £0* p.a.

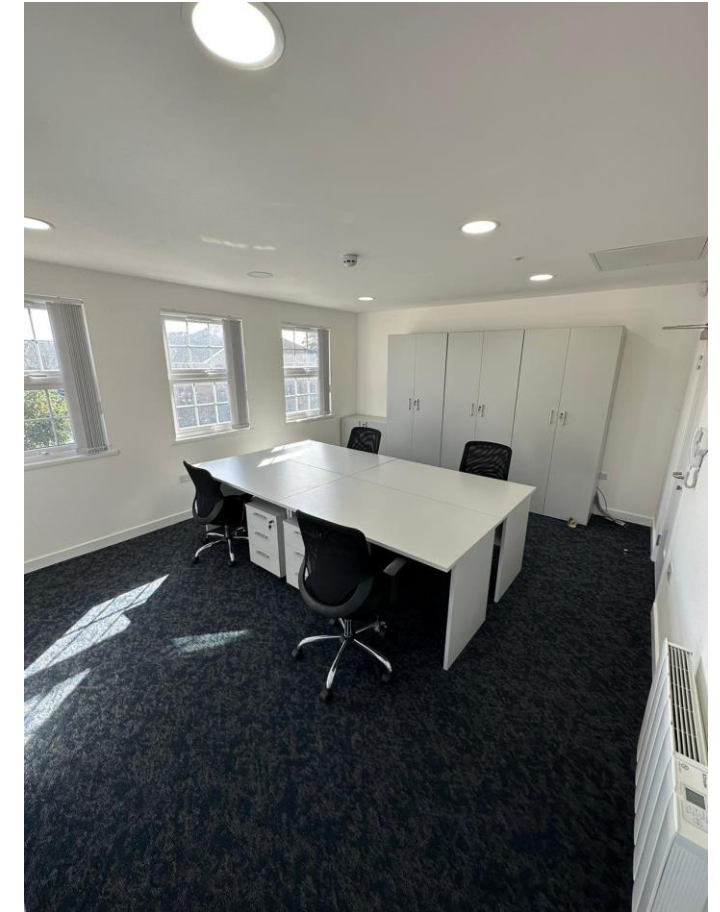
*Note - Small business rates relief available (subject to terms)

EPC:

The property benefits from a D Rating. Certificate and further details available on request.



Office 3 – Second Floor



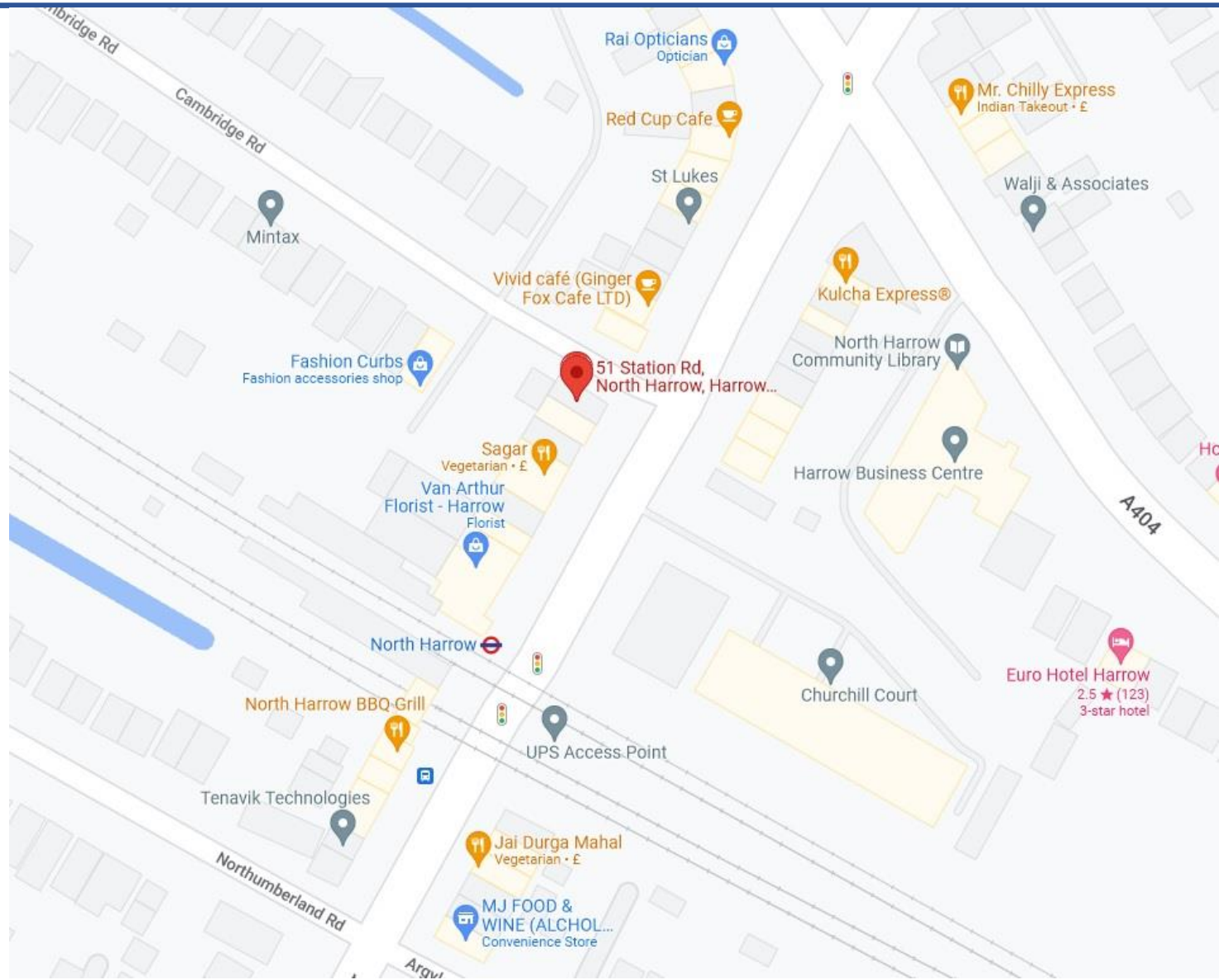
Office 4 – Second Floor

London HA2 - 51 Station Road, North Harrow HA2 7SR Offices to Rent



Location:

North Harrow is a suburban area of North West London, within the London Borough of Harrow. The property is situated next to North Harrow Metropolitan Line Underground Station which provides access into central London via Baker Street in 23 minutes. By road, the property is 4.2 miles from the A40 Western Avenue or 11 miles from the M1 Motorway junction 4. Occupiers nearby include Costa Coffee, Best-One convenience store, Pharmacy, Café, Hair Salon and more.



London HA2 - 51 Station Road, North Harrow HA2 7SR

Offices to Rent

Contacts:

For further information or to schedule a viewing, please contact Sam Georgev or Joseph Bachman.



Sam Georgev – VP Sales & Lettings
M: +44(0)75545 57088
E: sam@bluealpine.com



Joseph Bachman – COO
M: +44(0)77236 19270
E: joseph@bluealpine.com



BLUE ALPINE

PROPERTY INVESTMENT & DEVELOPMENT

Address:

Blue Alpine Partners Limited

Trading Address: 54 Welbeck Street, Marylebone, London W1G 9XZ

Registered Address: Suite 115, Devonshire House, Manor Way, Borehamwood, Hertfordshire, WD6 1QQ

Disclaimer: Blue Alpine Partners prepares sales and letting particulars diligently and all reasonable steps are taken to ensure that they are correct. Neither a seller nor a landlord nor Blue Alpine Partners will, however, be under any liability to any purchaser or tenant or prospective purchaser or tenant in respect of them. If a property is unoccupied, Blue Alpine Partners may not have all the information required by a prospective purchaser or tenant in its possession, may not be able to obtain it and may not be able to verify all the information which it does hold. Prospective purchasers should make their own investigations before finalising any agreement to purchase or lease.