



CREST
NICHOLSON

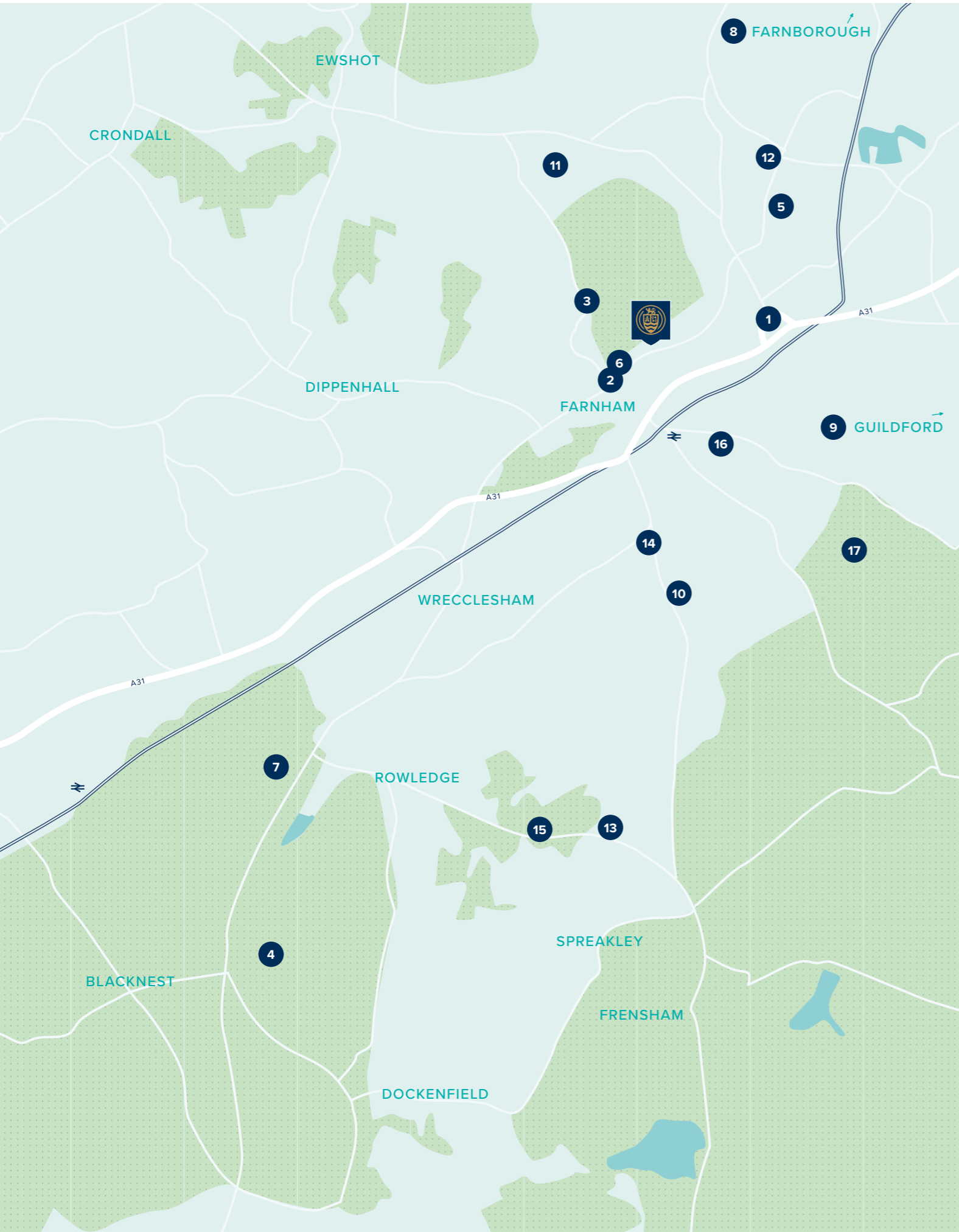
BRIGHTWELLS YARD

FARNHAM • SURREY

Perfectly situated to enjoy the beauty of surrounding scenery and the bustle of town, you will find Brightwells Yard is an ideal place to call home.

1, 2 & 3 BEDROOM APARTMENTS





WELCOME TO LIFE IN SURREY

A great choice of amenities, easy access to transport links, and being at the heart of an attractive market town. Your new home at Brightwells Yard really does offer everything you need.

On your doorstep

Shops, restaurants and leisure facilities form part of the development, but you don't have to travel far to find a range of additional options to enjoy and experience.

- 1 Shepherd and Flock
- 2 Borelli's Wine Bar & Grill
- 3 Farnham Park
- 4 Alice Holt Forest
- 5 David Lloyd Gym
- 6 Farnham Leisure Centre
- 7 Birdworld
- 8 Farnborough (15 minutes' drive)
- 9 Guildford (27 minutes' drive)






Education

There is an excellent choice of schools for all ages in the surrounding area, including a co-educational day and boarding school and an independent girls' school.

- 10 South Farnham School Infants
- 11 Folly Hill Infant School
- 12 William Cobbett Primary School
- 13 More House School
- 14 The Ridgeway Community School
- 15 Frensham Heights School
- 16 The Abbey School
- 17 Waverley Abbey School

Travel

With a train station just a short walk away, and easy access to the M3, M4, M25 and A3, as well as two major airports, you will find getting around is simple.

-  Farnham Station – 9 minutes' walk
-  Guildford – 27 minutes
-  London Waterloo – 1 hour
-  Heathrow Airport – 32 minutes' drive
-  Gatwick Airport – 53 minutes' drive





BRIGHTWELLS YARD

East Street, Farnham,
Surrey, GU9 7UA

For all enquiries please call

01252 982426

brightwellsyard@crestnicholson.com

crestnicholson.com/brightwellsyard

A NEW DESTINATION IN THE HEART OF FARNHAM

Brightwells Yard is a contemporary collection of 1, 2 & 3 bedroom apartments in the centre of this attractive market town.

As well as our choice of beautiful apartments, you will find this transformed part of Farnham also includes a range of amenities. Here you will find shops, bars, restaurants and leisure facilities, including a small cinema, all set around a new square. For you, it means this exciting new development offers not just a home, but a whole new place to enjoy and experience.

Like each of our developments, much consideration has gone into what is close to home. If you want to step away from town for a while, there is a choice of green, open spaces, including Gostrey Meadow on the River Wey. Or, if history is a subject you enjoy, the 12th century Farnham Castle is just a short distance away.

With so much to discover, from the attractive Georgian architecture to the local scenery to everything that's on your doorstep, you can look forward to living life to the full in a brand new destination.





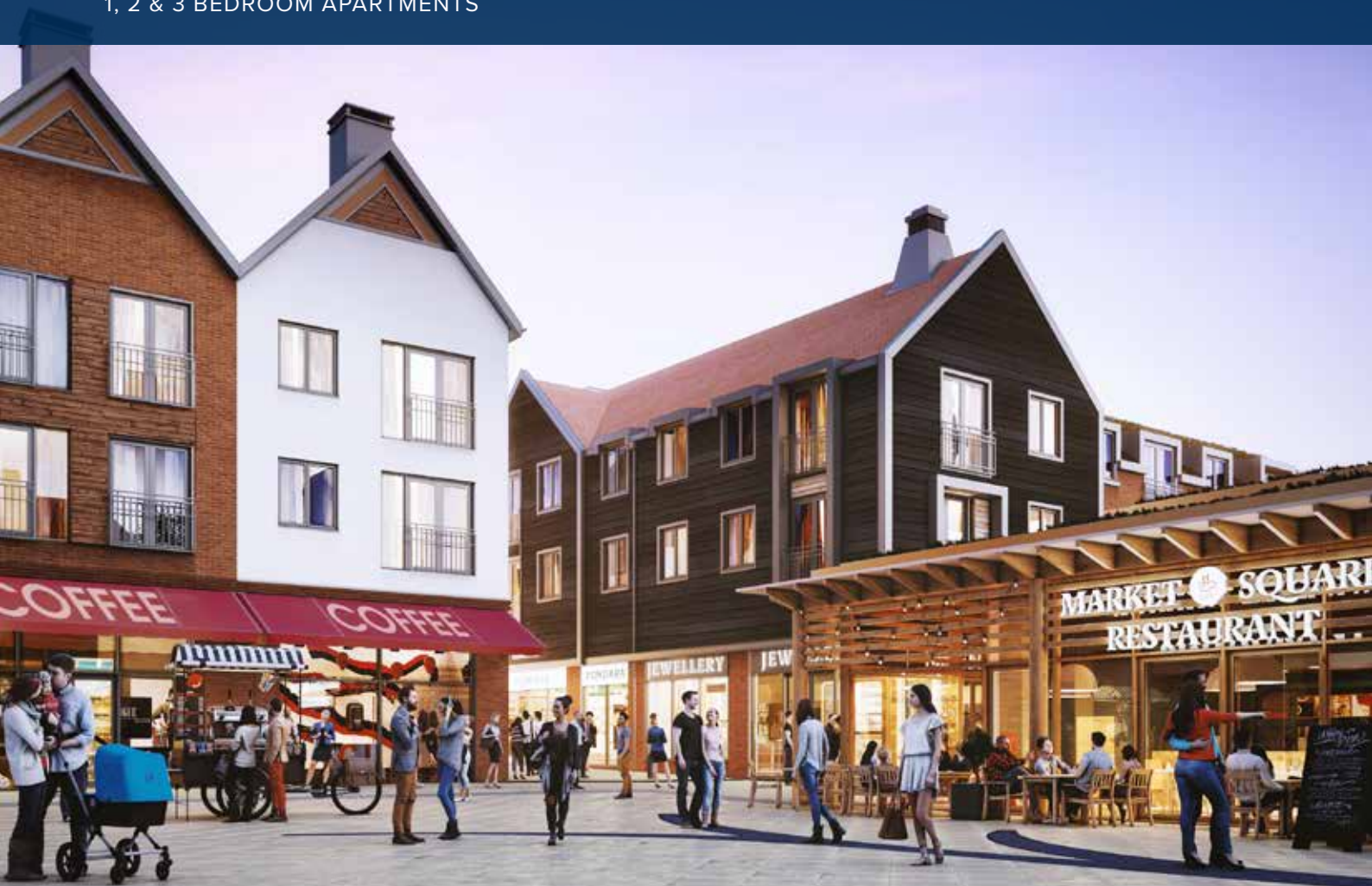
**CREST
NICHOLSON**

BRIGHTWELLS YARD

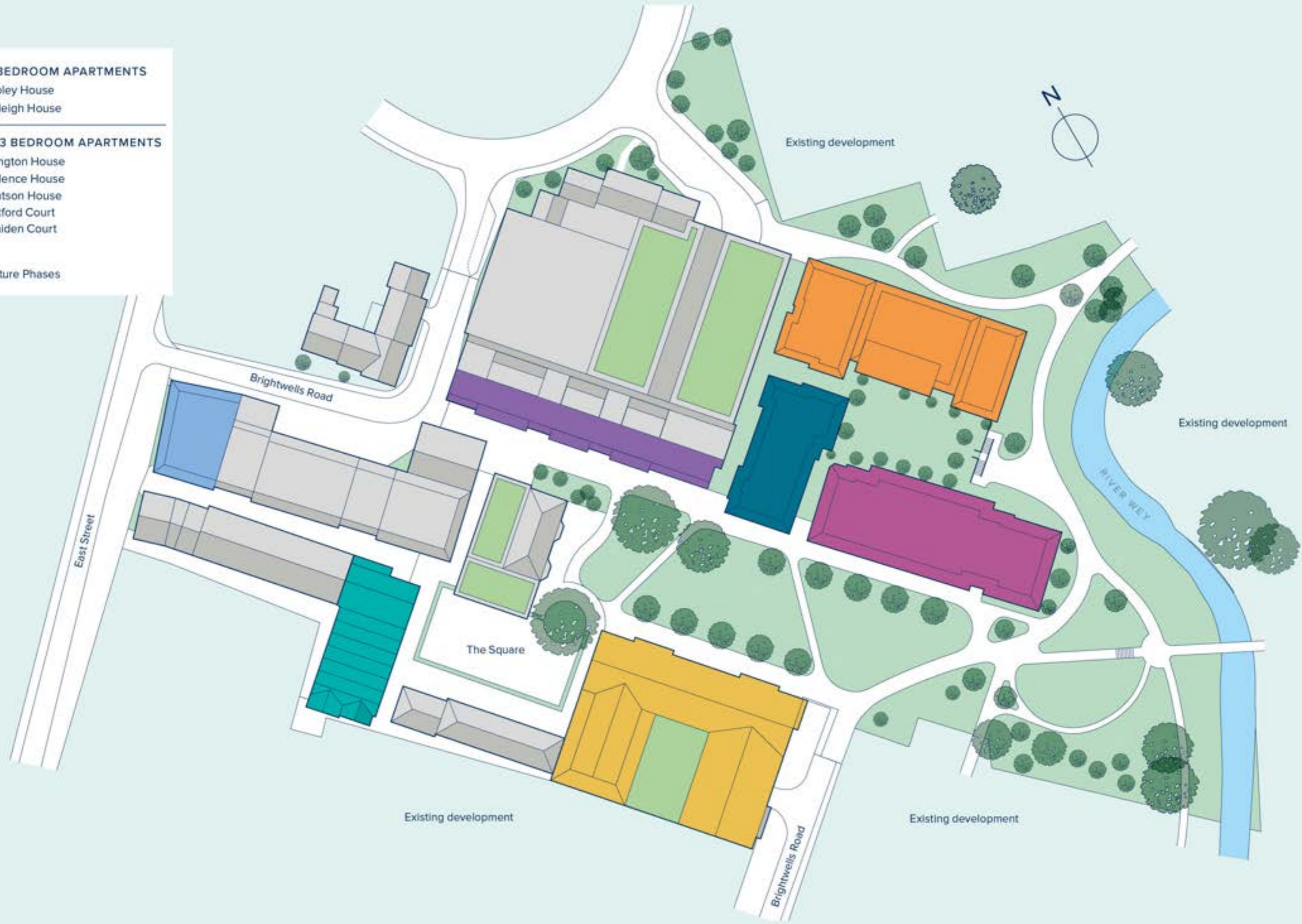
DEVELOPMENT PLAN

A stylish and thoughtfully designed collection of 1, 2 & 3 bedroom apartments

1, 2 & 3 BEDROOM APARTMENTS



- 1 & 2 BEDROOM APARTMENTS**
 - Ripley House
 - Raleigh House
- 1, 2 & 3 BEDROOM APARTMENTS**
 - Langton House
 - Valence House
 - Watson House
 - Mitford Court
 - Maiden Court
- Future Phases





**CREST
NICHOLSON**

BRIGHTWELLS YARD

MAIDEN COURT

GROUND FLOOR

This building is host to a collection of one, two and three double bedroom apartments which feature open plan living on a generous scale.

Balconies, terraces and bay windows are a feature of these properties, creating some beautifully bright and airy interiors. Some of the larger properties benefit from exquisite wrap-around terraces, providing a variety of elevated views.

En suite bathrooms are generously provided, as is built-in storage, creating extremely practical, as well as desirable, properties.

1, 2 & 3 BEDROOM APARTMENTS





TYPE 4 - PLOT 149

KITCHEN / LIVING AREA	
7.23m x 3.41m	23'7" x 11'2"
BEDROOM 1	3.43m x 3.1m
	11'3" x 10'2"
BEDROOM 2	3.93m x 2.75m
	12'9" x 9'0"

TYPE 1 - PLOT 150

KITCHEN / LIVING AREA	
7.52m x 3.54m	24'7" x 11'6"
BEDROOM	3.93m x 2.8m
	12'9" x 9'2"

TYPE 8 - PLOT 155

KITCHEN / LIVING AREA	
6.55m x 4.19m	21'5" x 13'7"
BEDROOM 1	3.9m x 3.61m
	12'8" x 11'8"
BEDROOM 2	3.66m x 3.12m
	12'0" x 10'2"

TYPE 2 - PLOT 151

KITCHEN / LIVING AREA	
6.15m x 3.39m	20'2" x 11'1"
BEDROOM	3.5m x 2.8m
	11'5" x 9'2"

TYPE 7 - PLOT 154

KITCHEN / LIVING AREA	
6.39m x 4.26m	21'0" x 14'0"
BEDROOM 1	3.01m x 2.8m
	9'9" x 9'2"
BEDROOM 2	3.36m x 2.9m
	11'0" x 9'5"

TYPE 3 - PLOT 152

KITCHEN / LIVING AREA	
6.61m x 3.42m	21'7" x 11'2"
BEDROOM	3.97m x 2.8m
	13'0" x 9'2"

TYPE 6 - PLOT 153

KITCHEN / LIVING AREA	
7.52m x 3.47m	24'7" x 11'4"
BEDROOM 1	4.36m x 3.13m
	14'3" x 10'3"
BEDROOM 2	3.97m x 2.75m
	13'0" x 9'0"

TYPE 3 - PLOT 170

KITCHEN / LIVING AREA	
6.61m x 3.42m	21'7" x 11'2"
BEDROOM	3.97m x 2.8m
	13'0" x 9'2"

TYPE 2 - PLOT 171

KITCHEN / LIVING AREA	
6.15m x 3.39m	20'2" x 11'1"
BEDROOM	3.5m x 2.8m
	11'5" x 9'2"

TYPE 1 - PLOT 172

KITCHEN / LIVING AREA	
7.52m x 3.54m	24'7" x 11'6"
BEDROOM	3.93m x 2.8m
	12'9" x 9'2"

TYPE 5 - PLOT 173

KITCHEN / LIVING AREA	
7.32m x 3.43m	24'0" x 11'3"
BEDROOM 1	3.56m x 3.1m
	11'7" x 10'2"
BEDROOM 2	4.02m x 2.75m
	13'2" x 9'0"

TYPE 9 - PLOT 174

KITCHEN / LIVING AREA	
8.31m x 3.95m	27'3" x 13'0"
BEDROOM 1	6.24m x 2.9m
	20'5" x 9'5"
BEDROOM 2	5.01m x 2.8m
	16'4" x 9'2"
BEDROOM 3	4.1m x 2.75m
	13'5" x 9'0"

TYPE 6 - PLOT 175

KITCHEN / LIVING AREA	
7.52m x 3.47m	24'7" x 11'4"
BEDROOM 1	4.36m x 3.13m
	14'3" x 10'3"
BEDROOM 2	3.97m x 2.75m
	13'0" x 9'0"

B Bathroom
 ES En suite
 C Cupboard
 U Utility
 W Wardrobe



**CREST
NICHOLSON**

BRIGHTWELLS YARD

MAIDEN COURT

FIRST FLOOR

This building is host to a collection of one, two and three double bedroom apartments which feature open plan living on a generous scale.

Balconies, terraces and bay windows are a feature of these properties, creating some beautifully bright and airy interiors. Some of the larger properties benefit from exquisite wrap-around terraces, providing a variety of elevated views.

En suite bathrooms are generously provided, as is built-in storage, creating extremely practical, as well as desirable, properties.

1, 2 & 3 BEDROOM APARTMENTS





TYPE 4a - PLOT 156

KITCHEN / LIVING AREA	
7.23m x 3.41m	23'7" x 11'2"
BEDROOM 1	3.43m x 3.1m
	11'3" x 10'2"
BEDROOM 2	3.93m x 2.75m
	12'9" x 9'0"

TYPE 1a - PLOT 157

KITCHEN / LIVING AREA	
7.52m x 3.54m	24'7" x 11'6"
BEDROOM	3.93m x 2.8m
	12'9" x 9'2"

TYPE 8a - PLOT 162

KITCHEN / LIVING AREA	
6.55m x 4.19m	21'5" x 13'7"
BEDROOM 1	3.9m x 3.61m
	12'8" x 11'8"
BEDROOM 2	3.66m x 3.12m
	12'0" x 10'2"

TYPE 2a - PLOT 158

KITCHEN / LIVING AREA	
6.15m x 3.39m	20'2" x 11'1"
BEDROOM	3.5m x 2.8m
	11'5" x 9'2"

TYPE 7a - PLOT 161

KITCHEN / LIVING AREA	
6.39m x 4.26m	21'0" x 14'0"
BEDROOM 1	3.01m x 2.8m
	9'9" x 9'2"
BEDROOM 2	3.41m x 2.9m
	11'0" x 9'5"

TYPE 3a - PLOT 159

KITCHEN / LIVING AREA	
6.61m x 3.42m	21'7" x 11'2"
BEDROOM	3.97m x 2.8m
	13'0" x 9'2"

TYPE 6a - PLOT 160

KITCHEN / LIVING AREA	
7.52m x 3.47m	24'7" x 11'4"
BEDROOM 1	4.36m x 3.13m
	14'3" x 10'3"
BEDROOM 2	3.97m x 2.75m
	13'0" x 9'0"

TYPE 3a - PLOT 176

KITCHEN / LIVING AREA	
6.61m x 3.42m	21'7" x 11'2"
BEDROOM	3.97m x 2.8m
	13'0" x 9'2"

TYPE 2a - PLOT 177

KITCHEN / LIVING AREA	
6.15m x 3.39m	20'2" x 11'1"
BEDROOM	3.5m x 2.8m
	11'5" x 9'2"

TYPE 1a - PLOT 178

KITCHEN / LIVING AREA	
7.52m x 3.54m	24'7" x 11'6"
BEDROOM	3.93m x 2.8m
	12'9" x 9'2"

TYPE 5a - PLOT 179

KITCHEN / LIVING AREA	
7.32m x 3.43m	24'0" x 11'3"
BEDROOM 1	3.56m x 3.1m
	11'7" x 10'2"
BEDROOM 2	4m x 2.75m
	13'2" x 9'0"

TYPE 9a - PLOT 180

KITCHEN / LIVING AREA	
8.31m x 3.95m	27'3" x 13'0"
BEDROOM 1	6.24m x 2.9m
	20'5" x 9'5"
BEDROOM 2	5.01m x 2.8m
	16'4" x 9'2"
BEDROOM 3	4.1m x 2.75m
	13'5" x 9'0"

TYPE 6a - PLOT 181

KITCHEN / LIVING AREA	
7.52m x 3.47m	24'7" x 11'4"
BEDROOM 1	4.36m x 3.13m
	14'3" x 10'3"
BEDROOM 2	3.97m x 2.75m
	13'0" x 9'0"

B Bathroom
 ES En suite
 C Cupboard
 U Utility
 W Wardrobe



**CREST
NICHOLSON**

BRIGHTWELLS YARD

MAIDEN COURT

SECOND FLOOR

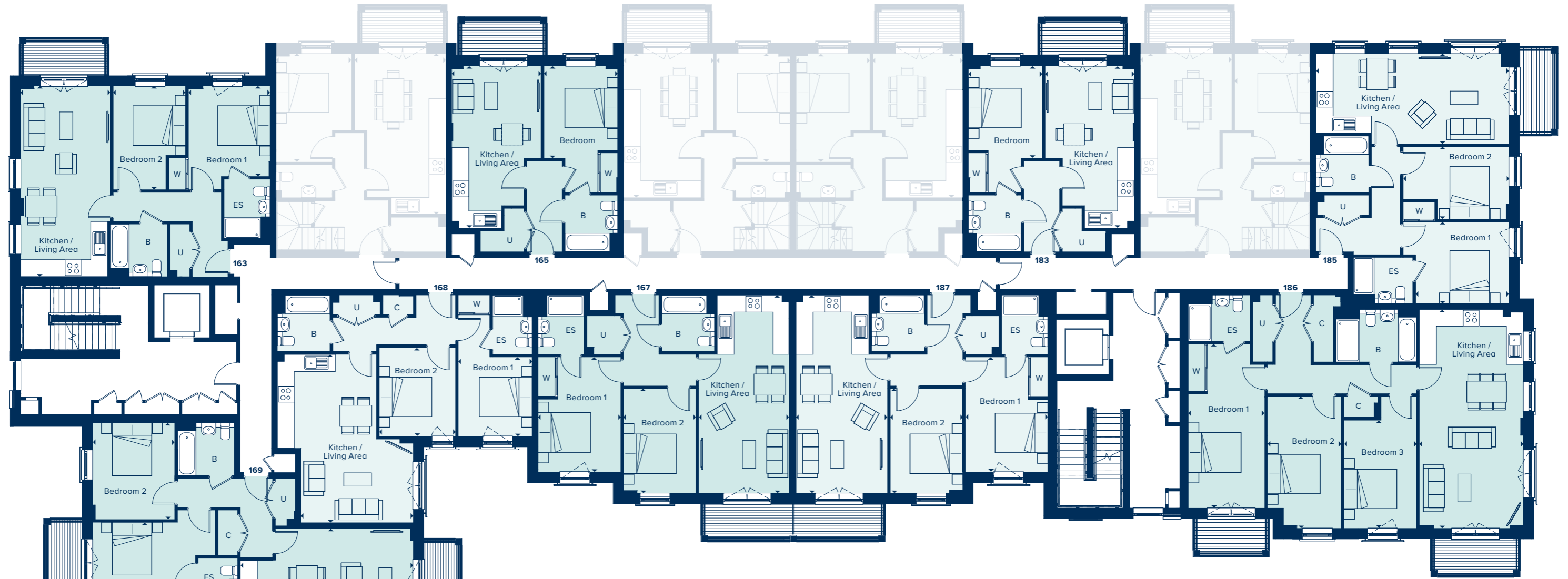
This building is host to a collection of one, two and three double bedroom apartments which feature open plan living on a generous scale.

Balconies, terraces and bay windows are a feature of these properties, creating some beautifully bright and airy interiors. Some of the larger properties benefit from exquisite wrap-around terraces, providing a variety of elevated views.

En suite bathrooms are generously provided, as is built-in storage, creating extremely practical, as well as desirable, properties.

1, 2 & 3 BEDROOM APARTMENTS





TYPE 4a - PLOT 163

KITCHEN / LIVING AREA	
7.23m x 3.41m	23'7" x 11'2"
BEDROOM 1	
3.43m x 3.1m	11'3" x 10'2"
BEDROOM 2	
3.93m x 2.75m	12'9" x 9'0"

TYPE 2a - PLOT 165

KITCHEN / LIVING AREA	
6.15m x 3.39m	20'2" x 11'1"
BEDROOM	
3.5m x 2.8m	11'5" x 9'2"

TYPE 8a - PLOT 169

KITCHEN / LIVING AREA	
6.55m x 4.19m	21'5" x 13'7"
BEDROOM 1	
3.9m x 3.61m	12'8" x 11'8"
BEDROOM 2	
3.66m x 3.12m	12'0" x 10'2"

TYPE 7a - PLOT 168

KITCHEN / LIVING AREA	
6.39m x 4.26m	21'0" x 14'0"
BEDROOM 1	
3.01m x 2.8m	9'9" x 9'2"
BEDROOM 2	
3.41m x 2.9m	11'2" x 9'5"

TYPE 6a - PLOT 167

KITCHEN / LIVING AREA	
7.52m x 3.47m	24'7" x 11'4"
BEDROOM 1	
4.36m x 3.13m	14'3" x 10'3"
BEDROOM 2	
3.97m x 2.75m	13'0" x 9'0"

TYPE 2a - PLOT 183

KITCHEN / LIVING AREA	
6.15m x 3.39m	20'2" x 11'1"
BEDROOM	
3.5m x 2.8m	11'5" x 9'2"

TYPE 5a - PLOT 185

KITCHEN / LIVING AREA	
7.32m x 3.43m	24'0" x 11'3"
BEDROOM 1	
3.56m x 3.1m	11'7" x 10'2"
BEDROOM 2	
4m x 2.75m	13'2" x 9'0"

TYPE 9a - PLOT 186

KITCHEN / LIVING AREA	
8.31m x 3.95m	27'3" x 13'0"
BEDROOM 1	
6.24m x 2.9m	20'5" x 9'5"
BEDROOM 2	
5.01m x 2.8m	16'4" x 9'2"
BEDROOM 3	
4.1m x 2.75m	13'5" x 9'0"

TYPE 6a - PLOT 187

KITCHEN / LIVING AREA	
7.52m x 3.47m	24'7" x 11'4"
BEDROOM 1	
4.36m x 3.13m	14'3" x 10'3"
BEDROOM 2	
3.97m x 2.75m	13'0" x 9'0"

B Bathroom
 ES En suite
 C Cupboard
 U Utility
 W Wardrobe



**CREST
NICHOLSON**

BRIGHTWELLS YARD

MAIDEN COURT

SECOND & THIRD FLOOR

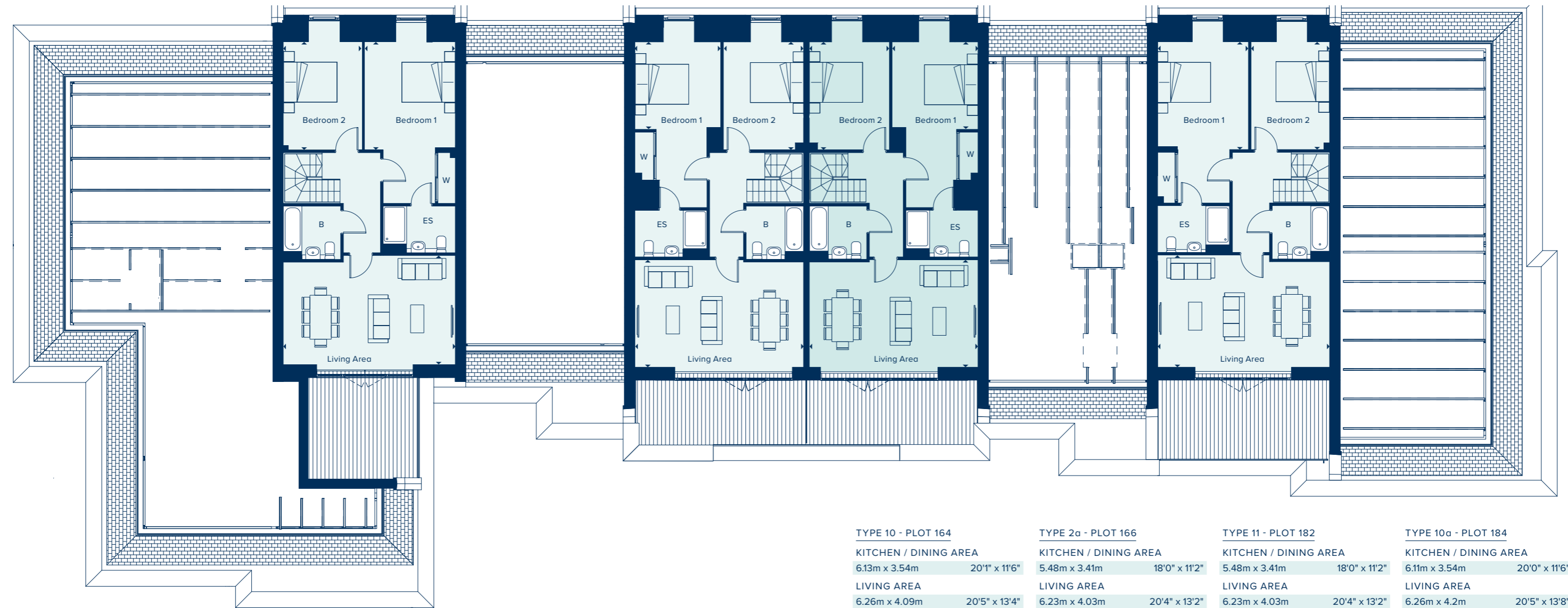
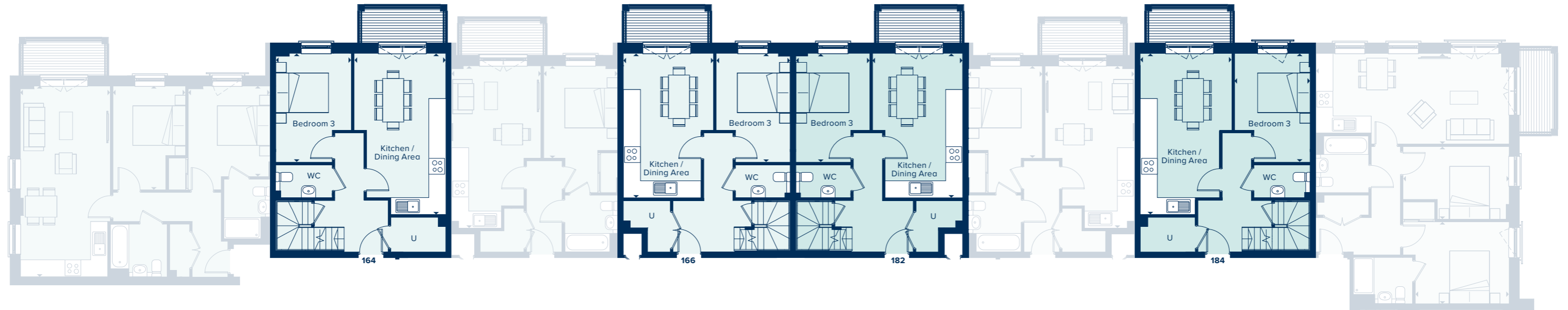
These duplex apartments are situated on the second and third floors: an elevated position which is well served by the exceptional provision of balconies and terraces.

With outside space facing both east and west, you'll have the perfect opportunity to enjoy the sun both with breakfast and with an evening drink. The west-facing terrace which leads from the living room would provide the ideal situation for an al fresco evening meal, just as the east-facing balcony leading from the kitchen is the perfect spot for morning coffee.

These apartments are generously sized throughout, with three double bedrooms, an en suite bathroom and downstairs wc in addition to a main bathroom, and ample storage space.

3 BEDROOM DUPLEX APARTMENTS





B Bathroom
 ES En suite
 U Utility
 W Wardrobe

TYPE 10 - PLOT 164		TYPE 2a - PLOT 166		TYPE 11 - PLOT 182		TYPE 10a - PLOT 184	
KITCHEN / DINING AREA		KITCHEN / DINING AREA		KITCHEN / DINING AREA		KITCHEN / DINING AREA	
6.13m x 3.54m	20'1" x 11'6"	5.48m x 3.41m	18'0" x 11'2"	5.48m x 3.41m	18'0" x 11'2"	6.11m x 3.54m	20'0" x 11'6"
LIVING AREA		LIVING AREA		LIVING AREA		LIVING AREA	
6.26m x 4.09m	20'5" x 13'4"	6.23m x 4.03m	20'4" x 13'2"	6.23m x 4.03m	20'4" x 13'2"	6.26m x 4.2m	20'5" x 13'8"
BEDROOM 1		BEDROOM 1		BEDROOM 1		BEDROOM 1	
4.04m x 3.4m	13'3" x 11'2"	3.28m x 3.27m	10'8" x 10'7"	3.28m x 3.27m	10'8" x 10'7"	4.04m x 3.4m	13'3" x 11'2"
BEDROOM 2		BEDROOM 2		BEDROOM 2		BEDROOM 2	
4.04m x 2.94m	13'3" x 9'6"	4.05m x 3m	13'3" x 9'8"	4.05m x 3m	13'3" x 9'8"	4.04m x 2.94m	13'3" x 9'6"
BEDROOM 3		BEDROOM 3		BEDROOM 3		BEDROOM 3	
4.13m x 2.8m	13'5" x 9'2"	4.13m x 2.8m	13'5" x 9'2"	4.13m x 2.8m	13'5" x 9'2"	4.11m x 2.8m	13'5" x 9'2"



**CREST
NICHOLSON**

BRIGHTWELLS YARD

MITFORD COURT

GROUND FLOOR

This block hosts a selection of one, two and three double bedroom apartments.

On the ground floor, each property benefits from a private terrace, while the upper storeys offer a selection of balconies, Juliet balconies and bay windows, resulting in a collection of varied, but consistently bright and airy properties.

Open plan living is a feature of these apartments and provides living spaces which are generously sized, flexible and offer great opportunities for socialising.

Many of the larger apartments benefit from en suite shower rooms in addition to a main bathroom, and ample storage spaces are provided, many properties featuring built-in wardrobes.

1, 2 & 3 BEDROOM APARTMENTS





TYPE 4 - PLOT 206

KITCHEN / LIVING AREA	
8.27m x 3.34m	27'1" x 11'0"
BEDROOM 1	
3.05m x 2.85m	10'0" x 9'4"
BEDROOM 2	
4.41m x 2.99m	14'5" x 9'8"

TYPE 1 - PLOT 207

KITCHEN / LIVING AREA	
7.09m x 3.4m	23'3" x 11'2"
BEDROOM	
4.48m x 2.8m	14'7" x 9'2"

TYPE 2 - PLOT 208

KITCHEN / LIVING AREA	
6.11m x 3.5m	20'0" x 11'5"
BEDROOM	
3.59m x 2.8m	11'8" x 9'2"

TYPE 10 - PLOT 209

KITCHEN / LIVING AREA	
8.19m x 3.62m	26'9" x 11'9"
BEDROOM 1	
3.18m x 2.99m	10'4" x 9'8"
BEDROOM 2	
3.42m x 2.8m	11'2" x 9'2"

TYPE 3 - PLOT 210

KITCHEN / LIVING AREA	
6.68m x 3.37m	21'9" x 11'1"
BEDROOM	
3.98m x 2.8m	13'1" x 9'2"

TYPE 5 - PLOT 220

KITCHEN / LIVING AREA	
8.03m x 3.57m	26'3" x 11'7"
BEDROOM 1	
3.43m x 2.9m	11'3" x 9'5"
BEDROOM 2	
4.58m x 2.85m	15'0" x 9'4"

TYPE 6 - PLOT 221

KITCHEN / LIVING AREA	
8.03m x 3.61m	26'3" x 11'8"
BEDROOM 1	
4.64m x 2.9m	15'2" x 9'5"
BEDROOM 2	
3.44m x 2.8m	11'3" x 9'2"

TYPE 7 - PLOT 222

KITCHEN / LIVING AREA	
8.21m x 3.51m	26'9" x 11'5"
BEDROOM 1	
4.44m x 3.1m	14'6" x 10'2"
BEDROOM 2	
4.91m x 2.8m	16'1" x 9'2"

TYPE 13 - PLOT 223

KITCHEN / LIVING AREA	
6.73m x 5.71m	22'1" x 18'7"
BEDROOM 1	
5.76m x 4.5m	18'9" x 14'8"
BEDROOM 2	
4.28m x 3.37m	14'0" x 11'1"
BEDROOM 3	
4.28m x 2.9m	14'0" x 9'5"

TYPE 8 - PLOT 224

KITCHEN / LIVING AREA	
6.7m x 3.44m	22'0" x 11'3"
BEDROOM 1	
3.63m x 3m	11'9" x 9'8"
BEDROOM 2	
3.15m x 3.15m	10'3" x 10'3"

TYPE 9 - PLOT 225

KITCHEN / LIVING AREA	
7.58m x 3.62m	24'9" x 11'9"
BEDROOM 1	
3.63m x 2.9m	11'9" x 9'5"
BEDROOM 2	
4.03m x 2.8m	13'2" x 9'2"

B Bathroom
 ES En suite
 C Cupboard
 U Utility
 W Wardrobe



**CREST
NICHOLSON**

BRIGHTWELLS YARD

MITFORD COURT

FIRST FLOOR

This block hosts a selection of one, two and three double bedroom apartments.

On the ground floor, each property benefits from a private terrace, while the upper storeys offer a selection of balconies, Juliet balconies and bay windows, resulting in a collection of varied, but consistently bright and airy properties.

Open plan living is a feature of these apartments and provides living spaces which are generously sized, flexible and offer great opportunities for socialising.

Many of the larger apartments benefit from en suite shower rooms in addition to a main bathroom, and ample storage spaces are provided, many properties featuring built-in wardrobes.

1, 2 & 3 BEDROOM APARTMENTS





TYPE 4a - PLOT 211

KITCHEN / LIVING AREA	
8.27m x 3.34m	27'1" x 11'0"
BEDROOM 1	
3.05m x 2.85m	10'0" x 9'4"
BEDROOM 2	
4.41m x 2.98m	14'5" x 9'8"

TYPE 1a - PLOT 212

KITCHEN / LIVING AREA	
7.09m x 3.4m	23'3" x 11'2"
BEDROOM	
4.48m x 2.8m	14'7" x 9'2"

TYPE 16 - PLOT 213

KITCHEN / LIVING AREA	
9.15m x 3.55m	30'0" x 11'6"
BEDROOM 1	
3.1m x 3.1m	10'2" x 10'2"
BEDROOM 2	
3.81m x 3.2m	12'5" x 10'5"
BEDROOM 3	
4.54m x 2.75m	14'9" x 9'0"

TYPE 12 - PLOT 214

KITCHEN / LIVING AREA	
7.53m x 3.58m	24'7" x 11'7"
BEDROOM 1	
3.53m x 2.9m	11'6" x 9'5"
BEDROOM 2	
4.26m x 2.8m	14'0" x 9'2"

TYPE 5a - PLOT 226

KITCHEN / LIVING AREA	
8.03m x 3.57m	26'3" x 11'7"
BEDROOM 1	
3.43m x 2.9m	11'3" x 9'5"
BEDROOM 2	
4.58m x 2.85m	15'0" x 9'4"

TYPE 6a - PLOT 227

KITCHEN / LIVING AREA	
8.03m x 3.61m	26'3" x 11'8"
BEDROOM 1	
4.64m x 2.9m	15'2" x 9'5"
BEDROOM 2	
3.44m x 2.8m	11'3" x 9'2"

TYPE 7a - PLOT 228

KITCHEN / LIVING AREA	
8.21m x 3.51m	26'9" x 11'5"
BEDROOM 1	
4.44m x 3.1m	14'6" x 10'2"
BEDROOM 2	
4.91m x 2.8m	16'1" x 9'2"

TYPE 14 - PLOT 229

KITCHEN / LIVING AREA	
6.77m x 5.71m	22'2" x 18'7"
BEDROOM 1	
4.28m x 3.25m	14'0" x 10'7"
BEDROOM 2	
4.28m x 3.02m	14'0" x 9'9"
BEDROOM 3	
4.28m x 2.9m	14'0" x 9'5"

TYPE 11 - PLOT 230

KITCHEN / LIVING AREA	
6.7m x 3.68m	22'0" x 12'1"
BEDROOM 1	
4.45m x 3.1m	14'6" x 10'2"
BEDROOM 2	
3.15m x 2.9m	10'3" x 9'5"

TYPE 15 - PLOT 231

KITCHEN / LIVING AREA	
7.58m x 3.88m	24'9" x 12'7"
BEDROOM 1	
5.73m x 2.9m	18'8" x 9'5"
BEDROOM 2	
4.28m x 2.85m	14'0" x 9'4"
BEDROOM 3	
4.28m x 2.8m	14'0" x 9'2"

B Bathroom
 ES En suite
 C Cupboard
 U Utility
 W Wardrobe



**CREST
NICHOLSON**

BRIGHTWELLS YARD

MITFORD COURT

SECOND FLOOR

This block hosts a selection of one, two and three double bedroom apartments.

On the ground floor, each property benefits from a private terrace, while the upper storeys offer a selection of balconies, Juliet balconies and bay windows, resulting in a collection of varied, but consistently bright and airy properties.

Open plan living is a features of these apartments and provides living spaces which are generously sized, flexible and offer great opportunities for socialising.

Many of the larger apartments benefit from en suite shower rooms in addition to a main bathroom, and ample storage spaces are provided, many properties featuring built-in wardrobes.

1, 2 & 3 BEDROOM APARTMENTS





TYPE 4 - PLOT 215

KITCHEN / LIVING AREA	
8.27m x 3.34m	27'1" x 11'0"
BEDROOM 1	
3.05m x 2.85m	10'0" x 9'4"
BEDROOM 2	
4.41m x 2.98m	14'5" x 9'8"

TYPE 1a - PLOT 216

KITCHEN / LIVING AREA	
7.09m x 3.4m	23'3" x 11'2"
BEDROOM	
4.48m x 2.8m	14'7" x 9'2"

TYPE 16 - PLOT 217

KITCHEN / LIVING AREA	
9.15m x 3.55m	30'0" x 11'6"
BEDROOM 1	
3.1m x 3.1m	10'2" x 10'2"
BEDROOM 2	
3.81m x 3.2m	12'5" x 10'5"
BEDROOM 3	
4.54m x 2.75m	14'9" x 9'0"

TYPE 12 - PLOT 218

KITCHEN / LIVING AREA	
7.53m x 3.58m	24'7" x 11'7"
BEDROOM 1	
3.53m x 2.9m	11'6" x 9'5"
BEDROOM 2	
4.26m x 2.8m	14'0" x 9'2"

TYPE 5a - PLOT 232

KITCHEN / LIVING AREA	
8.03m x 3.57m	26'3" x 11'7"
BEDROOM 1	
3.43m x 2.9m	11'3" x 9'5"
BEDROOM 2	
4.58m x 2.85m	15'0" x 9'4"

TYPE 6a - PLOT 233

KITCHEN / LIVING AREA	
8.03m x 3.61m	26'3" x 11'8"
BEDROOM 1	
4.64m x 2.9m	15'2" x 9'5"
BEDROOM 2	
3.44m x 2.8m	11'3" x 9'2"

TYPE 7a - PLOT 234

KITCHEN / LIVING AREA	
8.21m x 3.51m	26'9" x 11'5"
BEDROOM 1	
4.44m x 3.1m	14'6" x 10'2"
BEDROOM 2	
4.91m x 2.8m	16'1" x 9'2"

TYPE 14 - PLOT 235

KITCHEN / LIVING AREA	
6.77m x 5.71m	22'2" x 18'7"
BEDROOM 1	
4.28m x 3.25m	14'0" x 10'7"
BEDROOM 2	
4.28m x 3.02m	14'0" x 9'9"
BEDROOM 3	
4.28m x 2.9m	14'0" x 9'5"

TYPE 11 - PLOT 236

KITCHEN / LIVING AREA	
6.7m x 3.68m	22'0" x 12'1"
BEDROOM 1	
4.45m x 3.11m	14'6" x 10'2"
BEDROOM 2	
3.15m x 2.9m	10'3" x 9'5"

B Bathroom
 ES En suite
 C Cupboard
 U Utility
 W Wardrobe



**CREST
NICHOLSON**

BRIGHTWELLS YARD

MITFORD COURT

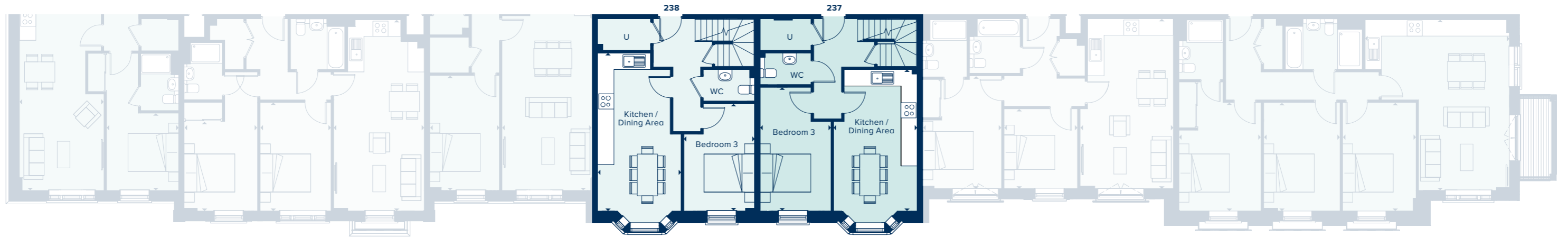
SECOND & THIRD FLOOR

Spread across the second and third floors, these properties offer three double bedrooms and generous living spaces.

The lower floor provides a large kitchen diner, with a south west facing bay window providing ample natural light. A bedroom, wc and two large cupboards are also provided. On the upper floor, a large living room features two sets of double glass doors which lead onto a roof terrace. Two further bedrooms (one en suite) are also accommodated on this floor, along with and a bathroom and further storage space.

1, 2 & 3 BEDROOM DUPLEX APARTMENTS





TYPE 19 - PLOT 219

KITCHEN / LIVING AREA	6.63m x 6.3m	21'8" x 20'7"
BEDROOM 1	4.38m x 2.98m	14'4" x 9'8"
BEDROOM 2	3.5m x 3.38m	11'5" x 11'1"
BEDROOM 3	3.68m x 2.8m	12'1" x 9'2"

TYPE 18 - PLOT 238

KITCHEN / DINING AREA	6.23m x 3.31m	20'4" x 10'9"
LIVING AREA	6.21m x 3.54m	20'4" x 11'6"
BEDROOM 1	5.46m x 3.16m	17'9" x 10'4"
BEDROOM 2	4.16m x 2.95m	13'6" x 9'7"
BEDROOM 3	4.23m x 2.8m	13'9" x 9'2"

TYPE 17 - PLOT 237

KITCHEN / DINING AREA	5.58m x 3.31m	18'3" x 10'9"
LIVING AREA	6.21m x 3.84m	20'4" x 12'6"
BEDROOM 1	4.16m x 2.95m	13'6" x 9'7"
BEDROOM 2	4.16m x 3.06m	13'6" x 10'0"
BEDROOM 3	4.88m x 2.8m	16'0" x 9'2"

TYPE 20 - PLOT 239

KITCHEN / LIVING AREA	7.81m x 7.01m	25'6" x 23'0"
BEDROOM 1	4.18m x 3.1m	13'7" x 10'2"
BEDROOM 2	3.98m x 3.27m	13'1" x 10'7"
BEDROOM 3	3.98m x 2.8m	13'1" x 9'2"

B Bathroom
 ES En suite
 C Cupboard
 U Utility
 W Wardrobe



BRIGHTWELLS YARD
WATSON HOUSE

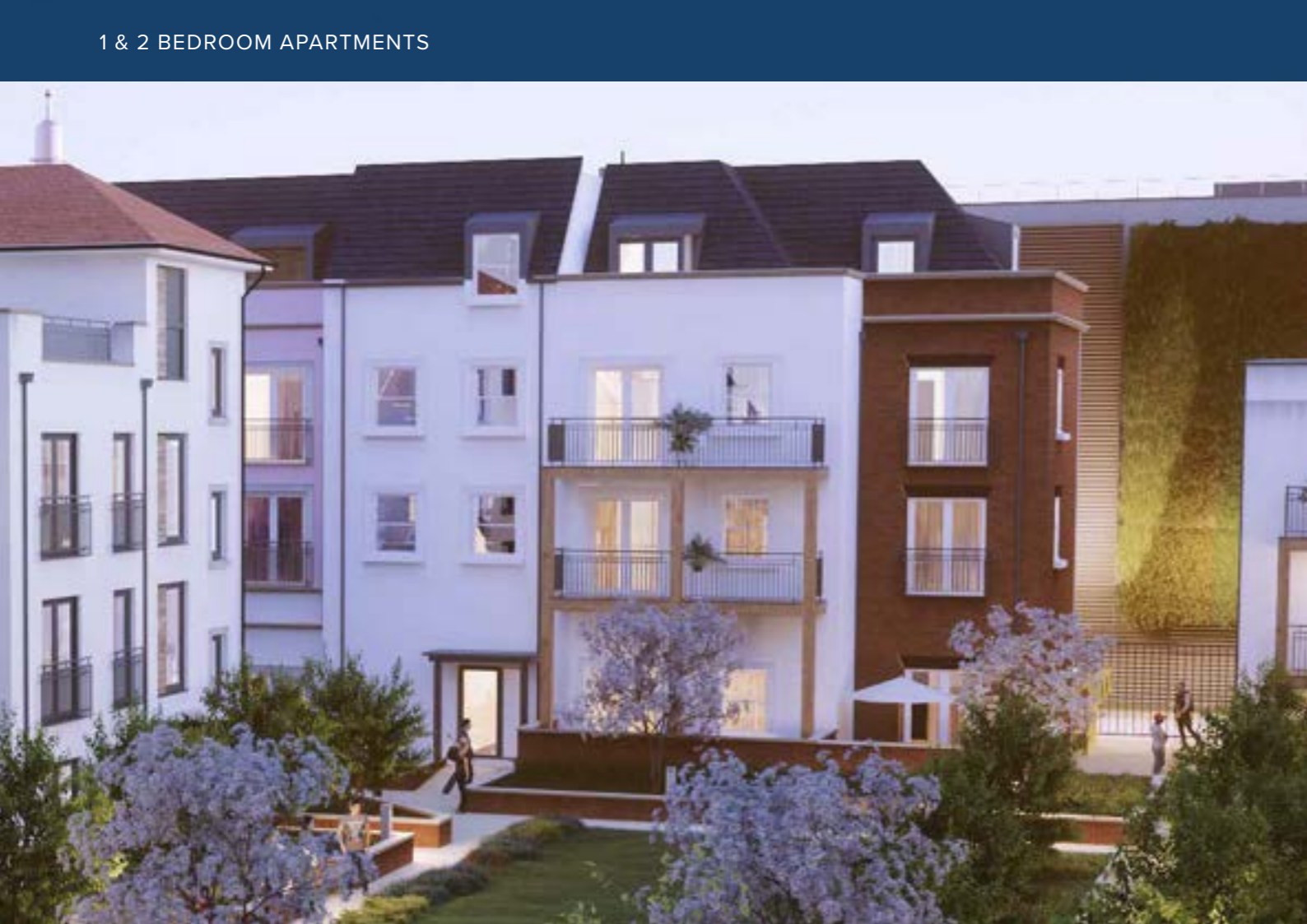
GROUND FLOOR

This building is host to a collection of one, two and three double bedroom apartments which feature open plan living on a generous scale.

Balconies, terraces and bay windows are a feature of these properties, creating some beautifully bright and airy interiors. Some of the larger properties benefit from exquisite wrap-around terraces, providing a variety of elevated views.

En suite bathrooms are generously provided, as is built-in storage, creating extremely practical, as well as desirable, properties.

1 & 2 BEDROOM APARTMENTS



TYPE 4 - PLOT 188

KITCHEN / LIVING AREA

6.51m x 4.04m 21'4" x 13'3"

BEDROOM 1

3.93m x 3.93m 12'9" x 12'9"

BEDROOM 2

3.30m x 3.11m 10'8" x 10'2"

TYPE 1 - PLOT 189

KITCHEN / LIVING AREA

6.69m x 3.42m 21'9" x 11'2"

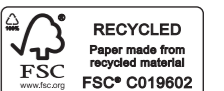
BEDROOM

4.09m x 2.8m 13'4" x 9'2"



B Bathroom
ES En suite
U Utility
W Wardrobe

Please note, the digital illustrations are for illustration purposes only and any may not accurately depict elevation materials, gradients, landscaping or street furniture and may be subject to change. Whilst every effort has been made to ensure that the measurements and dimensions referred to in this brochure are an accurate reflection of the dimensions and measurements of the plots when built, the dimensions may vary from the measurements shown in the brochure save that any such variation shall be no greater than +/- 50mm of the measurements referred to in the brochure. You are strongly advised, therefore, not to order any carpets, appliances or any other goods which depend on precise dimensions before carrying out an actual measurement within your reserved plot. Whilst every reasonable effort has been made to ensure that the information contained in this brochure is correct, it is designed specifically as a guide only and does not constitute or form any part of a contract of sale transfer or lease unless any point that you specifically want to rely on is confirmed in writing by Crest Nicholson and is referred to in the contract. Please ask a sales executive for further details. Crest Nicholson is a registered developer with the New Homes Quality Code. Please speak to a sales executive if you need further help with any marketing material including provision in another format. STU9064/January 2023.





**CREST
NICHOLSON**

BRIGHTWELLS YARD

WATSON HOUSE

FIRST FLOOR

This building is host to a collection of one, two and three double bedroom apartments which feature open plan living on a generous scale.

Balconies, terraces and bay windows are a feature of these properties, creating some beautifully bright and airy interiors. Some of the larger properties benefit from exquisite wrap-around terraces, providing a variety of elevated views.

En suite bathrooms are generously provided, as is built-in storage, creating extremely practical, as well as desirable, properties.

1 & 2 BEDROOM APARTMENTS





B Bathroom
 ES En suite
 U Utility
 W Wardrobe

TYPE 4a - PLOT 190

KITCHEN / LIVING AREA	
6.51m x 4.04m	21'4" x 13'3"
BEDROOM 1	
3.93m x 3.93m	12'9" x 12'9"
BEDROOM 2	
3.39m x 3.11m	11'1" x 10'2"

TYPE 1a - PLOT 191

KITCHEN / LIVING AREA	
6.69m x 3.42m	21'9" x 11'2"
BEDROOM	
4.09m x 2.8m	13'4" x 9'2"

TYPE 2 - PLOT 192

KITCHEN / LIVING AREA	
5.74m x 3.4m	18'8" x 11'2"
BEDROOM	
3.14m x 2.8m	10'3" x 9'2"

TYPE 5 - PLOT 193

KITCHEN / LIVING AREA	
6.67m x 3.44m	21'9" x 11'3"
BEDROOM 1	
3.44m x 2.8m	11'3" x 9'2"
BEDROOM 2	
3.22m x 3.2m	10'6" x 10'5"

TYPE 6 - PLOT 194

KITCHEN / LIVING AREA	
7.45m x 3.49m	24'4" x 11'5"
BEDROOM 1	
3m x 2.9m	9'8" x 9'5"
BEDROOM 2	
4.16m x 2.8m	13'6" x 9'2"

TYPE 3 - PLOT 195

KITCHEN / LIVING AREA	
5.86m x 3.4m	19'2" x 11'2"
BEDROOM	
3.19m x 2.8m	10'5" x 9'2"

TYPE 7 - PLOT 196

KITCHEN / LIVING AREA	
6.74m x 3.58m	22'1" x 11'7"
BEDROOM 1	
3.19m x 2.9m	10'5" x 9'5"
BEDROOM 2	
3.19m x 2.9m	10'5" x 9'5"



**CREST
NICHOLSON**

BRIGHTWELLS YARD

WATSON HOUSE

SECOND FLOOR

This building is host to a collection of one, two and three double bedroom apartments which feature open plan living on a generous scale.

Balconies, terraces and bay windows are a feature of these properties, creating some beautifully bright and airy interiors. Some of the larger properties benefit from exquisite wrap-around terraces, providing a variety of elevated views.

En suite bathrooms are generously provided, as is built-in storage, creating extremely practical, as well as desirable, properties.

1 & 2 BEDROOM APARTMENTS





B Bathroom
 ES En suite
 U Utility
 W Wardrobe

TYPE 4a - PLOT 197

KITCHEN / LIVING AREA	
6.51m x 4.04m	21'4" x 13'3"
BEDROOM 1	
3.93m x 3.93m	12'9" x 12'9"
BEDROOM 2	
3.39m x 3.11m	11'1" x 10'2"

TYPE 1a - PLOT 198

KITCHEN / LIVING AREA	
6.69m x 3.42m	21'9" x 11'2"
BEDROOM	
4.09m x 2.8m	13'4" x 9'2"

TYPE 2 - PLOT 199

KITCHEN / LIVING AREA	
5.74m x 3.4m	18'8" x 11'2"
BEDROOM	
3.14m x 2.8m	10'3" x 9'2"

TYPE 5 - PLOT 200

KITCHEN / LIVING AREA	
6.67m x 3.44m	21'9" x 11'3"
BEDROOM 1	
3.44m x 2.8m	11'3" x 9'2"
BEDROOM 2	
3.22m x 3.2m	10'6" x 10'5"

TYPE 6 - PLOT 201

KITCHEN / LIVING AREA	
7.45m x 3.49m	24'4" x 11'5"
BEDROOM 1	
3m x 2.9m	9'8" x 9'5"
BEDROOM 2	
4.16m x 2.8m	13'6" x 9'2"

TYPE 3 - PLOT 202

KITCHEN / LIVING AREA	
5.86m x 3.4m	19'2" x 11'2"
BEDROOM	
3.19m x 2.8m	10'5" x 9'2"

TYPE 7 - PLOT 203

KITCHEN / LIVING AREA	
6.74m x 3.58m	22'1" x 11'7"
BEDROOM 1	
3.19m x 2.9m	10'5" x 9'5"
BEDROOM 2	
3.19m x 2.9m	10'5" x 9'5"



**CREST
NICHOLSON**

BRIGHTWELLS YARD

WATSON HOUSE

THIRD FLOOR

With outside space facing both east and west, you'll have the perfect opportunity to enjoy the sun both with breakfast and with an evening drink. The west-facing terrace which leads from the living room would provide the ideal situation for an al fresco evening meal, just as the east-facing balcony leading from the kitchen is the perfect spot for morning coffee.

These apartments are generously sized throughout, with three double bedrooms, two en suite bathrooms, a main bathroom, and ample storage space.

3 BEDROOM APARTMENTS





TYPE 9 - PLOT 205

KITCHEN / LIVING AREA

9m x 5.61m 29'5" x 18'4"

BEDROOM 1

4.82m x 3.34m 15'8" x 11'0"

BEDROOM 2

5.39m x 3.69m 17'7" x 12'1"

BEDROOM 3

4.02m x 3m 13'2" x 9'8"

TYPE 8 - PLOT 204

KITCHEN / LIVING AREA

7.01m x 5.75m 23'0" x 18'9"

BEDROOM 1

3.72m x 3.35m 12'2" x 11'0"

BEDROOM 2

3.65m x 3.54m 12'0" x 11'6"

BEDROOM 3

3.91m x 3.35m 12'8" x 11'0"

B Bathroom
 ES En suite
 U Utility
 W Wardrobe



**CREST
NICHOLSON**

BRIGHTWELLS YARD

LANGTON HOUSE

FIRST FLOOR

The one and two bedroom apartments in Langton House are arranged in a 'u' shape with a residents' garden in its centre. The majority of those properties overlooking the garden have the opportunity to do so from a personal terrace or balcony.

An open plan approach to living, kitchen and dining rooms is a feature of these apartments and in most cases these rooms are significantly enhanced with the inclusion of a Juliet balcony, terrace or large bay window.

With some of the two bedroom apartments benefiting from both a main bathroom and an en suite to the main bedroom, this is a collection of generously sized and beautifully light properties.

1 & 2 BEDROOM APARTMENTS



LANGTON HOUSE

FIRST FLOOR

B Bathroom
 ES En suite
 C Cupboard
 U Utility
 W Wardrobe

TYPE 10 - PLOT 110
 KITCHEN / LIVING AREA
 7.7m x 3.5m 25'3" x 11'6"
 BEDROOM 1
 3.4m x 2.9m 11'2" x 9'6"
 BEDROOM 2
 4.5m x 2.85m 14'9" x 9'4"

TYPE 9 - PLOT 109
 KITCHEN / LIVING AREA
 7.5m x 3.55m 24'7" x 11'8"
 BEDROOM 1
 5.2m x 2.9m 13'1" x 9'6"
 BEDROOM 2
 4m x 2.8m 13'1" x 9'2"

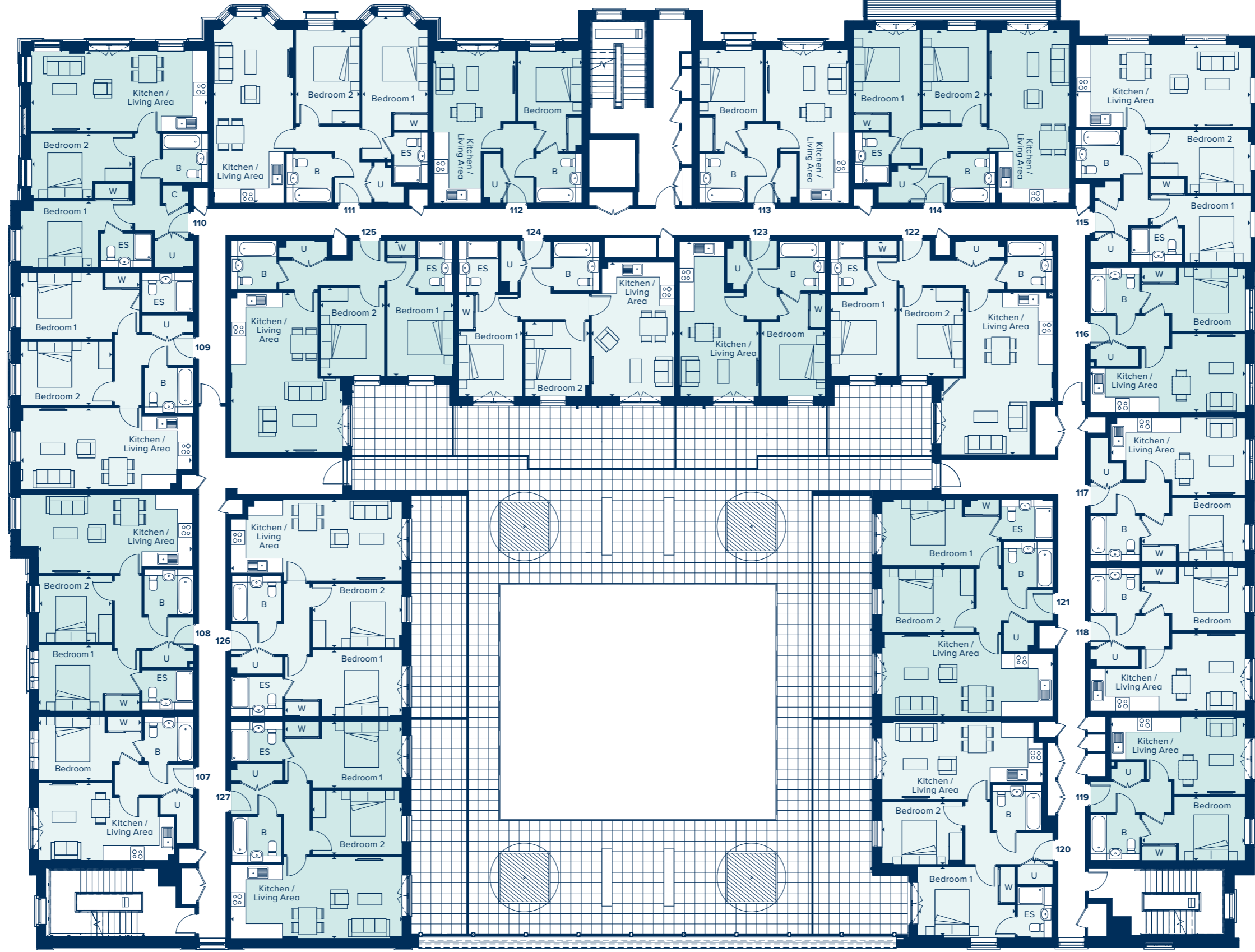
TYPE 8 - PLOT 108
 KITCHEN / LIVING AREA
 7.51m x 3.45m 24'8" x 11'4"
 BEDROOM 1
 4.42m x 2.9m 14'6" x 9'6"
 BEDROOM 2
 3.22m x 2.9m 10'7" x 9'6"

TYPE 7 - PLOT 107
 KITCHEN / LIVING AREA
 5.92m x 3.4m 19'5" x 11'2"
 BEDROOM
 3.22m x 2.8m 10'7" x 9'2"

TYPE 20 - PLOT 127
 KITCHEN / LIVING AREA
 7.47m x 3.57m 24'6" x 11'9"
 BEDROOM 1
 3.92m x 2.9m 12'10" x 9'6"
 BEDROOM 2
 3.92m x 2.8m 12'10" x 9'2"

TYPE 19 - PLOT 126
 KITCHEN / LIVING AREA
 7.47m x 3.57m 24'6" x 11'9"
 BEDROOM 1
 3.92m x 2.9m 12'10" x 9'6"
 BEDROOM 2
 3.92m x 2.8m 12'10" x 9'2"

TYPE 18 - PLOT 125
 KITCHEN / LIVING AREA
 6.99m x 3.8m 22'11" x 12'5"
 BEDROOM 1
 3.55m x 2.8m 11'8" x 9'2"
 BEDROOM 2
 3.85m x 2.9m 12'8" x 9'6"



TYPE 11 - PLOT 111
 KITCHEN / LIVING AREA
 8.17m x 3.49m 26'10" x 11'5"
 BEDROOM 1
 4.23m x 2.88m 13'10" x 9'5"
 BEDROOM 2
 4.12m x 2.8m 13'6" x 9'2"

TYPE 2 - PLOT 112
 KITCHEN / LIVING AREA
 6.65m x 3.6m 21'10" x 11'10"
 BEDROOM
 3.1m x 2.8m 10'2" x 9'2"

TYPE 2 - PLOT 113
 KITCHEN / LIVING AREA
 6.65m x 3.6m 21'10" x 11'10"
 BEDROOM
 3.1m x 2.8m 10'2" x 9'2"

TYPE 12 - PLOT 114
 KITCHEN / LIVING AREA
 7.55m x 3.53m 24'9" x 11'7"
 BEDROOM 1
 3.6m x 2.9m 11'10" x 9'6"
 BEDROOM 2
 4.1m x 2.8m 14'5" x 9'2"

TYPE 13 - PLOT 115
 KITCHEN / LIVING AREA
 7.64m x 3.58m 25'1" x 11'9"
 BEDROOM 1
 2.9m x 2.9m 9'6" x 9'6"
 BEDROOM 2
 4.39m x 2.8m 14'5" x 9'2"

TYPE 3 - PLOT 116
 KITCHEN / LIVING AREA
 6.77m x 3.4m 22'3" x 11'2"
 BEDROOM
 3.21m x 2.8m 10'6" x 9'2"

TYPE 1 - PLOT 117
 KITCHEN / LIVING AREA
 5.88m x 2.66m 19'3" x 8'9"
 BEDROOM
 3.22m x 2.8m 10'7" x 9'2"

* Width measurement taken from kitchen

TYPE 17 - PLOT 124
 KITCHEN / LIVING AREA
 5.86m x 3.62m 19'3" x 11'10"
 BEDROOM 1
 4.45m x 2.8m 14'7" x 9'2"
 BEDROOM 2
 3.25m x 2.8m 10'8" x 9'6"

TYPE 5 - PLOT 123
 KITCHEN / LIVING AREA
 6.76m x 3.46m 22'2" x 11'4"
 BEDROOM
 3.25m x 2.8m 10'8" x 9'2"

TYPE 16 - PLOT 122
 KITCHEN / LIVING AREA
 7.09m x 4.88m 23'3" x 16'
 BEDROOM 1
 3.55m x 2.9m 11'8" x 9'6"
 BEDROOM 2
 3.85m x 2.8m 12'8" x 9'2"

TYPE 15 - PLOT 121
 KITCHEN / LIVING AREA
 7.47m x 3.57m 24'6" x 11'9"
 BEDROOM 1
 5.22m x 2.79m 17'2" x 9'2"
 BEDROOM 2
 4.02m x 2.8m 13'2" x 9'2"

TYPE 14 - PLOT 120
 KITCHEN / LIVING AREA
 7.03m x 3.4m 23'1" x 11'2"
 BEDROOM 1
 4.3m x 2.99m 14'1" x 9'10"
 BEDROOM 2
 3.53m x 2.74m 11'7" x 9'2"

TYPE 4 - PLOT 119
 KITCHEN / LIVING AREA
 5.87m x 3.4m 19'3" x 11'2"
 BEDROOM
 3.11m x 2.8m 10'2" x 9'2"

TYPE 3 - PLOT 118
 KITCHEN / LIVING AREA
 6.77m x 3.4m 22'3" x 11'2"
 BEDROOM
 3.21m x 2.8m 10'6" x 9'2"



**CREST
NICHOLSON**

BRIGHTWELLS YARD

LANGTON HOUSE

SECOND FLOOR

The one and two bedroom apartments in Langton House are arranged in a 'u' shape with a residents' garden in its centre. The majority of those properties overlooking the garden have the opportunity to do so from a private terrace or balcony.

An open plan approach to living, kitchen and dining rooms is a feature of these apartments and in most cases these rooms are significantly enhanced with the inclusion of a Juliet balcony, terrace or large bay window.

With some of the two bedroom apartments benefiting from both a main bathroom and an en suite to the main bedroom, this is a collection of generously sized and beautifully light properties.

1 & 2 BEDROOM APARTMENTS



LANGTON HOUSE

SECOND FLOOR

B Bathroom
 ES En suite
 C Cupboard
 U Utility
 W Wardrobe

TYPE 10 - PLOT 131

KITCHEN / LIVING AREA	7.7m x 3.5m	25'3" x 11'6"
BEDROOM 1	3.4m x 2.9m	11'2" x 9'6"
BEDROOM 2	4.5m x 2.85m	14'1" x 9'4"

TYPE 11 - PLOT 132

KITCHEN / LIVING AREA	8.17m x 3.49m	26'10" x 11'5"
BEDROOM 1	4.23m x 2.88m	13'11" x 9'6"
BEDROOM 2	4.12m x 2.8m	13'6" x 9'2"

TYPE 9 - PLOT 130

KITCHEN / LIVING AREA	7.5m x 3.55m	24'7" x 11'8"
BEDROOM 1	5.2m x 2.9m	17'1" x 9'6"
BEDROOM 2	4m x 2.8m	13'1" x 9'2"

TYPE 8 - PLOT 129

KITCHEN / LIVING AREA	7.51m x 3.45m	24'8" x 11'4"
BEDROOM 1	4.42m x 2.9m	14'6" x 9'6"
BEDROOM 2	3.22m x 2.9m	10'7" x 9'6"

TYPE 1 - PLOT 128

KITCHEN / LIVING AREA	5.92m x 3.4m	19'5" x 11'2"
BEDROOM	3.22m x 2.8m	10'7" x 9'2"

TYPE 25 - PLOT 146

KITCHEN / LIVING AREA	8.81m x 4.88m	28'11" x 16'
BEDROOM 1	3.55m x 2.9m	11'8" x 9'6"
BEDROOM 2	3.85m x 2.8m	12'8" x 9'2"

TYPE 17a - PLOT 145

KITCHEN / LIVING AREA	5.86m x 3.62m	19'3" x 11'11"
BEDROOM 1	4.45m x 2.8m	14'7" x 9'2"
BEDROOM 2	3.25m x 2.8m	10'8" x 9'2"

TYPE 20a - PLOT 148

KITCHEN / LIVING AREA	7.47m x 3.57m	24'6" x 11'9"
BEDROOM 1	3.92m x 2.9m	11'9" x 9'6"
BEDROOM 2	3.92m x 2.8m	11'9" x 9'2"

TYPE 19a - PLOT 147

KITCHEN / LIVING AREA	7.47m x 3.57m	24'6" x 11'9"
BEDROOM 1	3.92m x 2.9m	11'9" x 9'6"
BEDROOM 2	3.97m x 2.8m	13' x 9'2"

TYPE 5a - PLOT 144

KITCHEN / LIVING AREA	6.76m x 3.46m	22'2" x 11'4"
BEDROOM	3.25m x 2.8m	11'8" x 9'2"

TYPE 24 - PLOT 143

KITCHEN / LIVING AREA	8.81m x 4.88m	28'11" x 16'
BEDROOM 1	3.55m x 2.9m	11'8" x 9'6"
BEDROOM 2	3.85m x 2.8m	12'8" x 9'2"

TYPE 23 - PLOT 142

KITCHEN / LIVING AREA	7.96m x 3.57m	26'1" x 11'9"
BEDROOM 1	5.22m x 2.86m	17'2" x 9'5"
BEDROOM 2	4.02m x 2.8m	13'2" x 9'2"



TYPE 12a - PLOT 135

KITCHEN / LIVING AREA	7.55m x 3.53m	24'9" x 11'7"
BEDROOM 1	3.6m x 2.9m	11'10" x 9'6"
BEDROOM 2	4.1m x 2.8m	13'5" x 9'2"

TYPE 21 - PLOT 136

KITCHEN / LIVING AREA	7.43m x 3.32m	24'5" x 10'11"
BEDROOM 1	4.17m x 2.9m	13'8" x 9'6"
BEDROOM 2	4.13m x 2.8m	13'7" x 9'2"

TYPE 3 - PLOT 137

KITCHEN / LIVING AREA	6.77m x 3.4m	22'3" x 11'2"
BEDROOM	3.21m x 2.75m	10'6" x 9'

TYPE 6 - PLOT 138

KITCHEN / LIVING AREA	5.88m x 2.66m	19'3" x 8'8"
BEDROOM	3.22m x 2.8m	10'7" x 9'2"

* Width measurement taken from kitchen

TYPE 3 - PLOT 139

KITCHEN / LIVING AREA	6.77m x 3.4m	22'3" x 11'2"
BEDROOM	3.21m x 2.75m	10'6" x 9'

TYPE 7 - PLOT 140

KITCHEN / LIVING AREA	5.65m x 2.66m	18'6" x 8'9"
BEDROOM	2.89m x 2.8m	9'6" x 9'2"

* Width measurement taken from kitchen

TYPE 22 - PLOT 141

KITCHEN / LIVING AREA	6.79m x 3.4m	22'3" x 11'2"
BEDROOM 1	4.06m x 3m	13'4" x 9'10"
BEDROOM 2	3.29m x 2.7m	10'10" x 8'10"



**CREST
NICHOLSON**

BRIGHTWELLS YARD

LANGTON HOUSE

THIRD FLOOR

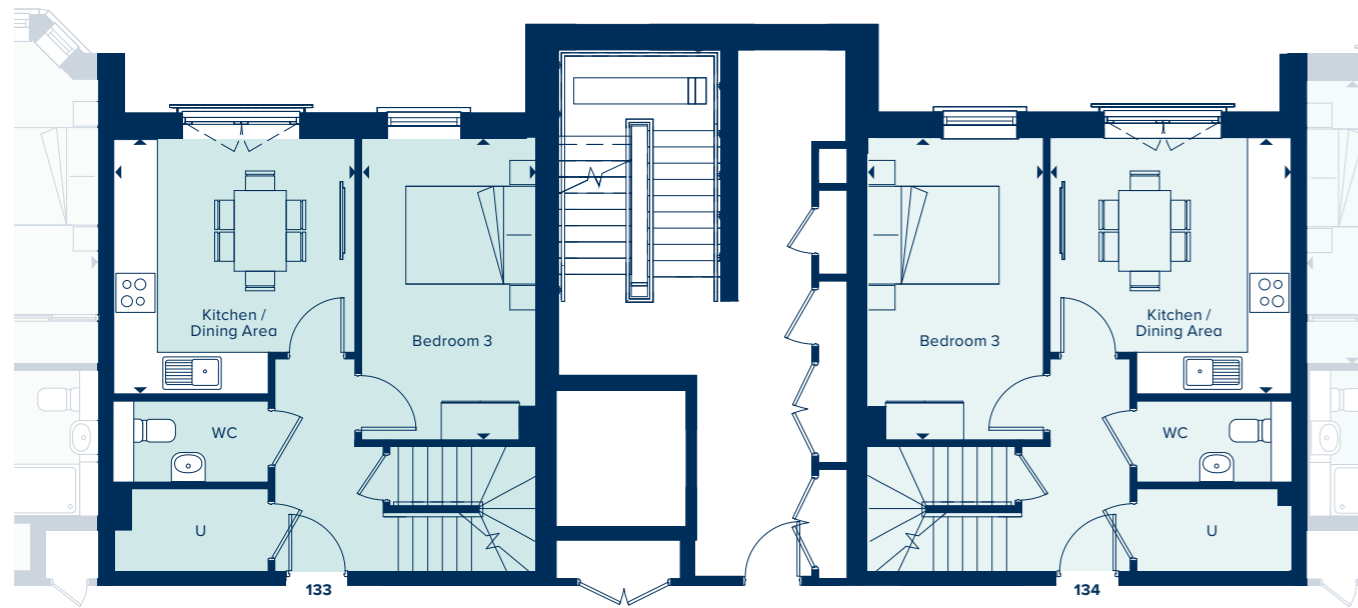
Enjoy two-storey living in an elevated position atop this attractive apartment block, with views to the north east over Brightwell Gardens and to the south west over a residents' garden. Enjoy the rising sun from your living room terrace in the morning and sunsets from the rear terrace which be accessed from both top floor bedrooms.

The lower floor of these properties feature a kitchen dining area, bedroom and wc. Stairs from the hallway ascend to the third floor of the building, which provides a large living room, two further bedrooms (one en suite) and a bathroom. The properties have the considerable attraction of two private roof terraces, accessible from the living rooms and bedrooms on the top storey.

Generously sized throughout, the properties offer sizeable living spaces and bedrooms and substantial built-in storage in addition to stunning outside spaces.

3 BEDROOM DUPLEX APARTMENTS





TYPE 26 - PLOT 133

KITCHEN / DINING AREA

3.95m x 3.68m 13' x 12'1"

BEDROOM 3

4.65m x 2.7m 15'3" x 8'10"

TYPE 26 - PLOT 134

KITCHEN / DINING AREA

3.95m x 3.68m 13' x 12'1"

BEDROOM 3

4.65m x 2.7m 15'3" x 8'10"

TYPE 26 - PLOT 133

LIVING AREA

6.5m x 4.2m 21'4" x 13'9"

BEDROOM 1

5.82m x 2.86m 19'1" x 9'5"

BEDROOM 2

4.57m x 3.29m 14' x 10'10"

TYPE 26 - PLOT 134

LIVING AREA

6.5m x 4.2m 21'4" x 13'9"

BEDROOM 1

5.82m x 2.86m 19'1" x 9'5"

BEDROOM 2

4.57m x 3.29m 14' x 10'10"

B Bathroom
 ES En suite
 U Utility
 W Wardrobe



**CREST
NICHOLSON**

BRIGHTWELLS YARD

RALEIGH HOUSE

SECOND FLOOR

Raleigh House comprises of one and two double-bedroom apartments. Each property is generously proportioned and many provide en suite shower rooms in addition to a main bathroom.

Open plan kitchen, dining and living areas further contribute to the sense of space. In many apartments double glass doors, Juliet balconies and dual aspect add to the light and airy ambience.

Each property has ample storage spaces and built-in wardrobes are a feature of many.

1 & 2 BEDROOM APARTMENTS



B Bathroom
 ES En suite
 C Cupboard
 U Utility



TYPE 10 - PLOT 32

KITCHEN / LIVING AREA
 7.08m x 3.4m 23'3" x 11'2"
 BEDROOM 1
 3.62m x 3m 11'11" x 9'10"
 BEDROOM 2
 3.62m x 2.74m 11'11" x 9'

TYPE 3 - PLOT 33

KITCHEN / LIVING AREA
 6.72m x 3.3m 22' x 10'10"
 BEDROOM
 4.08m x 2.91m 13'5" x 9'7"

TYPE 11 - PLOT 34

KITCHEN / LIVING AREA
 6.26m x 3.62m 20'7" x 11'11"
 BEDROOM 1
 3.13m x 2.85m 10'3" x 9'4"
 BEDROOM 2
 3.13m x 2.64m 10'3" x 8'8"

TYPE 4 - PLOT 35

KITCHEN / LIVING AREA
 6.84m x 3.35m 22'5" x 11"
 BEDROOM
 4.19m x 2.8m 13'9" x 9'2"

TYPE 5 - PLOT 36

KITCHEN / LIVING AREA
 6.51m x 3.28m 21'4" x 10'9"
 BEDROOM
 4.14m x 2.8m 13'7" x 9'2"

TYPE 1 - PLOT 37

KITCHEN / LIVING AREA
 6.97m x 3.39m 22'10" x 11'2"
 BEDROOM
 3.69m x 2.83m 12'2" x 9'3"

TYPE 9 - PLOT 38

KITCHEN / LIVING AREA
 4.91m x 4.28m 16'1" x 14'1"
 BEDROOM 1
 2.82m x 2.8m 9'3" x 9'2"
 BEDROOM 2
 3.35m x 3.12m 10'12" x 10'3"

TYPE 2 - PLOT 39

KITCHEN / LIVING AREA
 6.43m x 3.45m 21'1" x 11'4"
 BEDROOM
 3.75m x 2.8m 12'4" x 9'2"



**CREST
NICHOLSON**

BRIGHTWELLS YARD

RALEIGH HOUSE

THIRD FLOOR

Raleigh House comprises of one and two double-bedroom apartments. Each property is generously proportioned and many provide en suite shower rooms in addition to a main bathroom.

Open plan kitchen, dining and living areas further contribute to the sense of space. In many apartments double glass doors, Juliet balconies and dual aspect add to the light and airy ambience.

Each property has ample storage spaces and built-in wardrobes are a feature of many.

1 & 2 BEDROOM APARTMENTS



B Bathroom
 ES En suite
 C Cupboard
 U Utility



TYPE 12 - PLOT 40

KITCHEN / LIVING AREA
 6.73m x 3.4m 22'1" x 11'2"
BEDROOM 1
 3.28m x 3m 10'9" x 9'10"
BEDROOM 2
 3.28m x 2.74m 10'9" x 9'

TYPE 6 - PLOT 41

KITCHEN / LIVING AREA
 6.4m x 3.41m 21' x 11'2"
BEDROOM
 3.77m x 2.8m 12'4" x 9'2"

TYPE 13 - PLOT 42

KITCHEN / LIVING AREA
 6m x 3.27m 19'8" x 10'9"
BEDROOM 1
 3.08m x 2.8m 10'1" x 9'2"
BEDROOM 2
 3.08m x 2.51m 10'1" x 8'3"

TYPE 7 - PLOT 43

KITCHEN / LIVING AREA
 5.94m x 3.35m 19'6" x 11"
BEDROOM
 3.3m x 2.8m 10'10" x 9'2"

TYPE 8 - PLOT 44

KITCHEN / LIVING AREA
 5.61m x 2.63m 18'5" x 8'8"
BEDROOM
 3m x 2.8m 9'10" x 9'2"

TYPE 1a - PLOT 45

KITCHEN / LIVING AREA
 6.97m x 3.39m 22'10" x 11'2"
BEDROOM
 3.69m x 2.83m 12'1" x 9'3"

TYPE 9a - PLOT 46

KITCHEN / LIVING AREA
 4.91m x 3.15m 16'1" x 10'4"
BEDROOM 1
 2.82m x 2.8m 9'3" x 9'2"
BEDROOM 2
 3.35m x 3.12m 11' x 10'3"

TYPE 2a - PLOT 47

KITCHEN / LIVING AREA
 6.43m x 3.44m 21'1" x 11'3"
BEDROOM
 3.75m x 2.75m 12'4" x 9'



**CREST
NICHOLSON**

BRIGHTWELLS YARD

VALENCE HOUSE

SECOND AND THIRD FLOOR

Positioned over the second and third floor levels, these one and two bedroom properties are generously sized and beautifully designed to incorporate maximum natural light. Many are dual aspect and most include a Juliet balcony or private terrace, accessible from the open plan living, kitchen and dining room.

The larger properties include an en suite shower room in addition to the main bathroom, and all include ample storage space.

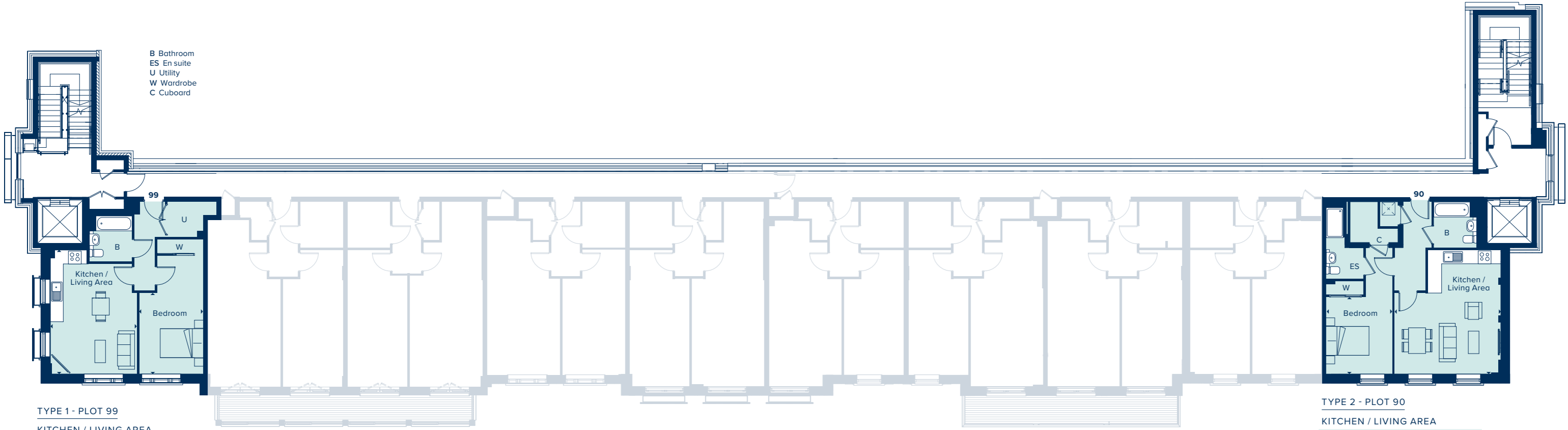
1 & 2 BEDROOM APARTMENTS



VALENCE HOUSE

SECOND FLOOR

B Bathroom
 ES En suite
 U Utility
 W Wardrobe
 C Cuboard



TYPE 1 - PLOT 99
 KITCHEN / LIVING AREA
 5.82m x 4.09m 19'1" x 13'4"
 BEDROOM
 3.81m x 3m 12'5" x 9'8"

TYPE 2 - PLOT 90
 KITCHEN / LIVING AREA
 5.82m x 4.99m 19'1" x 16'4"
 BEDROOM
 3.62m x 3.1m 11'9" x 10'2"

THIRD FLOOR

TYPE 3 - PLOT 106		TYPE 4 - PLOT 105		TYPE 5 - PLOT 104		TYPE 6 - PLOT 103		TYPE 7 - PLOT 102		TYPE 8 - PLOT 101		TYPE 9 - PLOT 100	
KITCHEN / LIVING AREA		KITCHEN / LIVING AREA		KITCHEN / LIVING AREA		KITCHEN / LIVING AREA		KITCHEN / LIVING AREA		KITCHEN / LIVING AREA		KITCHEN / LIVING AREA	
7.1m x 3.4m	23'3" x 11'2"	7.02m x 3.75m	23'0" x 12'3"	6.98m x 3.41m	22'9" x 11'2"	6.98m x 3.45m	22'9" x 11'3"	6.93m x 3.55m	22'7" x 11'6"	7.04m x 3.69m	23'1" x 12'1"	7.09m x 3.66m	23'3" x 12'0"
BEDROOM 1		BEDROOM 1		BEDROOM 1		BEDROOM		BEDROOM 1		BEDROOM 1		BEDROOM 1	
3.84m x 3.12m	12'6" x 10'2"	4.67m x 2.9m	15'3" x 9'5"	4.1m x 2.8m	13'5" x 9'2"	3.03m x 2.8m	9'9" x 9'2"	4.1m x 2.9m	13'5" x 9'5"	4.52m x 2.97m	14'8" x 9'7"	5.72m x 2.98m	18'8" x 9'8"
BEDROOM 2		BEDROOM 2		BEDROOM 2				BEDROOM 2		BEDROOM 2		BEDROOM 2	
3.25m x 2.95m	10'7" x 9'7"	3.47m x 2.8m	11'4" x 9'2"	4.75m x 2.75m	15'6" x 9'0"			4.5m x 2.8m	14'8" x 9'2"	3.49m x 2.8m	11'5" x 9'2"	3.42m x 2.67m	11'2" x 8'8"





BRIGHTWELLS YARD

East Street, Farnham,
Surrey, GU9 7UA

For all enquires please call

01252 982426

crestnicholson.com/brightwellsyard



Please note, the digital illustrations are for illustration purposes only and any may not accurately depict elevation materials, gradients, landscaping or street furniture and may be subject to change. Whilst every effort has been made to ensure that the measurements and dimensions referred to in this brochure are an accurate reflection of the dimensions and measurements of the plots when built, the dimensions may vary from the measurements shown in the brochure save that any such variation shall be no greater than +/- 50mm of the measurements referred to in the brochure. You are strongly advised, therefore, not to order any carpets, appliances or any other goods which depend on precise dimensions before carrying out an actual measurement within your reserved plot. Whilst every reasonable effort has been made to ensure that the information contained in this brochure is correct, it is designed specifically as a guide only and does not constitute or form any part of a contract of sale transfer or lease unless any point that you specifically want to rely on is confirmed in writing by Crest Nicholson and is referred to in the contract. Please ask a sales executive for further details. Crest Nicholson is a registered developer with the New Homes Quality Code. Please speak to a sales executive if you need further help with any marketing material including provision in another format. 1010369/January 2023.





BRIGHTWELLS YARD SPECIFICATION

From integrated appliances to modern, clean finishes, you can look forward to a stylish new home with a wonderful specification throughout.

1, 2 & 3 BEDROOM APARTMENTS



BRIGHTWELLS YARD

East Street, Farnham,
Surrey, GU9 7UA

For all enquiries please call

01252 982426

brightwellsyard@crestnicholson.com

crestnicholson.com/brightwellsyard

SPECIFICATION

KITCHEN

Fully fitted contemporary kitchen
Integrated single oven with 4 ring ceramic hob
Integrated extractor hood
Integrated fridge/freezer
Bristan sink with Bristan mixer tap in chrome

BATHROOM & EN SUITE

Fully fitted white Roca bathroom suite
Chrome mixer taps and shower fittings
Porcelanosa tiling to bathroom and en suite
Heated towel rail to bathroom and en suite

DECORATION, JOINERY & DOORS

Polished chrome ironmongery
Fitted wardrobes to master bedroom
Smooth finish pure brilliant white painted walls and ceilings

ELECTRICAL & LIGHTING

Electrical fittings in white throughout
Sky Q capabilities
Telephone point to hall area/cupboard
LED downlighters to bathroom and en suite

HEATING & ENERGY EFFICIENCY

100% energy efficiency lighting throughout
Electric heating with compact electric radiators

SECURITY & PEACE OF MIND

Mains operated smoke and heat detectors, with battery backup
Battery operated carbon monoxide detector

WARRANTY & AFTER CARE

Complete NHBC 10 year warranty
Thorough demonstration of your new home before it is handed to you
Advice provided on the best way to look after your home in the future
Support from a dedicated customer care team for the first two years



Whilst every effort has been made to ensure that the contents and specification in this brochure is correct and accurate at the time of creation, it may be subject to change and Crest Nicholson reserves the right to amend the contents and specification at any time prior to completion. This contents and specification does not in any way constitute or form any part of a contract of sale transfer or lease. Please ask a sales executive for further details.

Crest Nicholson is a registered developer with the New Homes Quality Code. Please speak to a sales executive if you need further help with any marketing material including provision in another format. 1011471/January 2024.



BRIGHTWELLS YARD

East Street, Farnham,
Surrey, GU9 7UA

For all enquiries please call

01252 982426

brightwellsyard@crestnicholson.com

crestnicholson.com/brightwellsyard



House Type Illustration

Please note, the digital illustrations are for illustration purposes only and any may not accurately depict elevation materials, gradients, landscaping or street furniture and may be subject to change. Whilst every effort has been made to ensure that the measurements and dimensions referred to in this brochure are an accurate reflection of the dimensions and measurements of the plots when built, the dimensions may vary from the measurements shown in the brochure save that any such variation shall be no greater than +/- 50mm of the measurements referred to in the brochure. You are strongly advised, therefore, not to order any carpets, appliances or any other goods which depend on precise dimensions before carrying out an actual measurement within your reserved plot. Whilst every reasonable effort has been made to ensure that the information contained in this brochure is correct, it is designed specifically as a guide only and does not constitute or form any part of a contract of sale transfer or lease unless any point that you specifically want to rely on is confirmed in writing by Crest Nicholson and is referred to in the contract. Please ask a sales executive for further details. Crest Nicholson is a registered developer with the New Homes Quality Code. Please speak to a sales executive if you need further help with any marketing material including provision in another format.

Development Map/Site Plan

Please note, the digital illustrations are for illustration purposes only and any may not accurately depict elevation materials, gradients, landscaping or street furniture. Whilst every effort has been made to ensure that the information in this site map is correct and accurate at the time of creation, it may be subject to change and Crest Nicholson reserves the right to amend the layout of the development. This site map does not in any way constitute or form any part of a contract of sale transfer or lease. Please ask a sales executive for further details. STU9064/January 2023.

