



REZIDE  
GROUP

OFFERS OVER £260,000  
FIELD EDGE DRIVE, BARROW UPON SOAR, LOUGHBOROUGH



Welcome to Field Edge Drive, a charming semi-detached property nestled in the picturesque landscape of Barrow upon Soar. Boasting three bedrooms, a spacious lounge/diner, modern kitchen, alarm system, off road parking, south facing garden, lots of storage and much more. This fantastic residence offers a blend of modern comforts and cozy living spaces, perfect for families and professionals alike.



Upon entry, you're greeted by a spacious bright and airy area entrance hall adorned with lush carpets, providing ample room for storing coats and shoes, with a convenient storage cupboard under the stairs. The modern kitchen, featuring tiled flooring and sleek cream shaker style cabinets, is equipped with top-of-the-line appliances and plenty of workspace, making meal preparation a delight. A downstairs WC adds convenience, while the inviting lounge diner, flooded with natural light, offers a perfect retreat with its upgraded stone fireplace and French doors leading to the generous rear garden.

Ascending the stairs, you'll discover three well-appointed bedrooms. The master bedroom, overlooking the serene garden, boasts tasteful décor, lush carpets, and its own ensuite







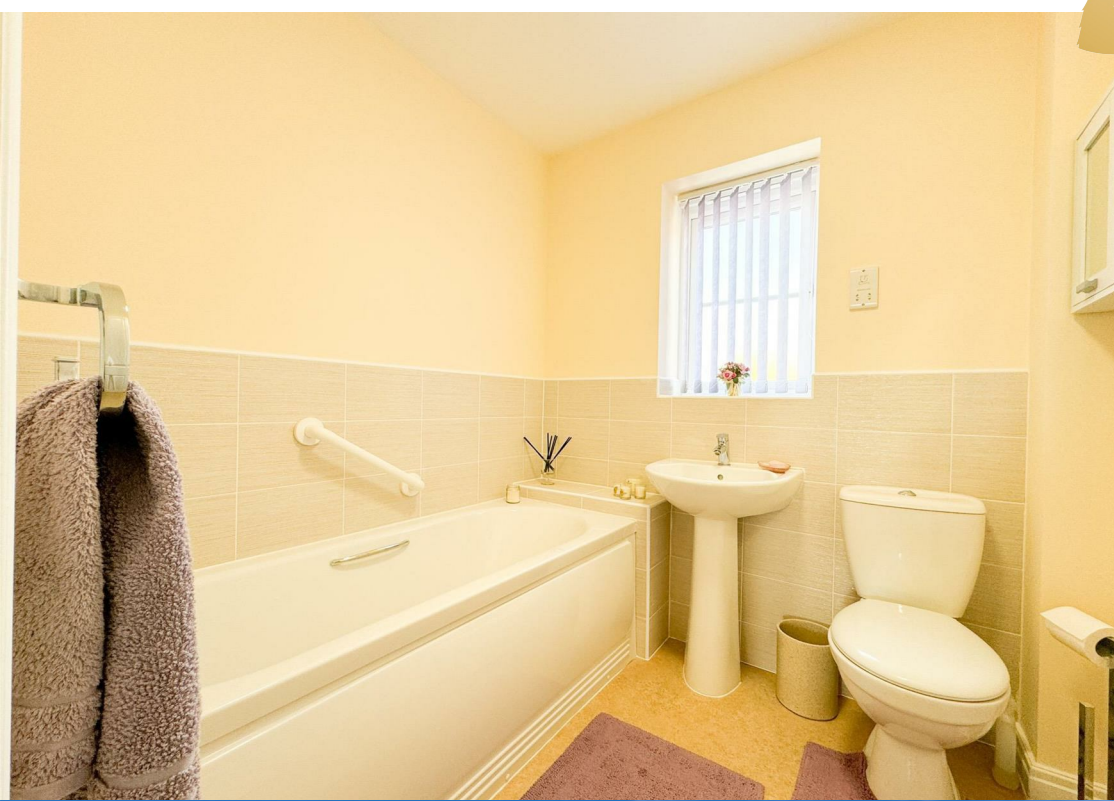
shower room, exuding luxury and comfort. Two additional bedrooms, one overlooking the beautiful countryside and the other enjoying front-facing views, offer versatility and style. A contemporary family bathroom with modern fixtures completes the upper level.

Outside, the property continues to impress with off-road parking for two vehicles and a spacious rear garden featuring a large lawn, extended patio seating area, and established shrubs, ideal for outdoor entertaining or simply relaxing amidst nature's tranquility.





Situated in the sought-after Poppyfields estate and just 4 1/2 years old, this home comes with plenty of NHBC warranty, offering peace of mind to its new owners. With its desirable location and impeccable features, Field Ed Drive is sure to attract significant interest. Don't miss your chance to make this captivating property your own. Arrange a viewing today and step into your dream home!

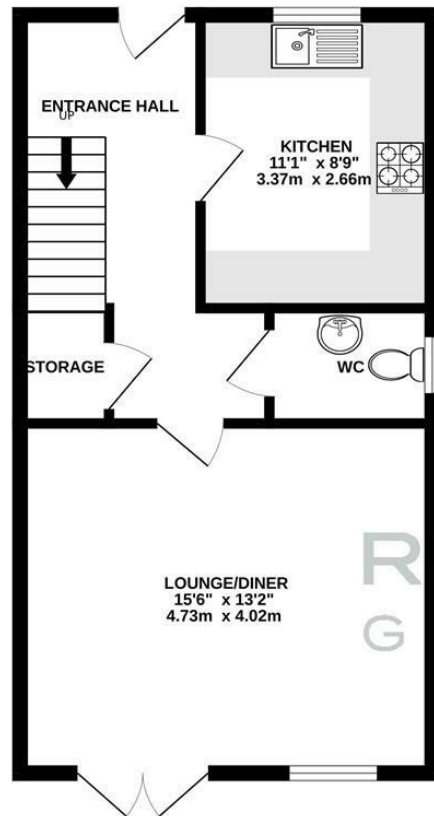




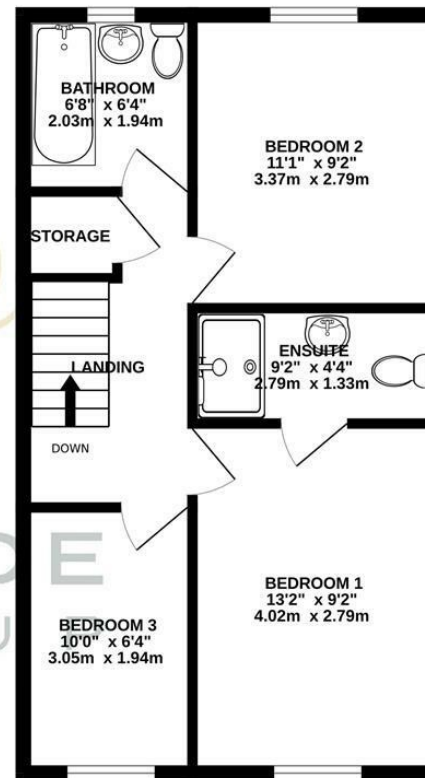




GROUND FLOOR  
444 sq.ft. (41.2 sq.m.) approx.



1ST FLOOR  
444 sq.ft. (41.2 sq.m.) approx.



TOTAL FLOOR AREA : 888 sq.ft. (82.5 sq.m.) approx.

Whilst every attempt has been made to ensure the accuracy of the floorplan contained here, measurements of doors, windows, rooms and any other items are approximate and no responsibility is taken for any error, omission or mis-statement. This plan is for illustrative purposes only and should be used as such by any prospective purchaser. The services, systems and appliances shown have not been tested and no guarantee as to their operability or efficiency can be given.  
Made with Metropix ©2024

