



**JOHNS AVENUE, MOUNTSORREL, LOUGHBOROUGH**  
**ASKING PRICE: £450,000**







Rezide are delighted to introduce this exceptional home, perfectly positioned in a quiet cul-de-sac in the heart of Mountsorrel. Offering a flexible layout with the option of three or four bedrooms, this beautifully designed property combines contemporary style with practical living. Thoughtfully finished with high-quality fixtures and fittings, it provides a modern yet comfortable space, ideal for families, professionals, or those looking for a stylish home in a sought-after location.





Upon entering, you are welcomed by a bright and spacious hallway with elegant tiled flooring and a handy under-stairs storage cupboard. To the right, a versatile reception room offers the perfect space for a study, playroom, additional sitting area, or even a fourth bedroom, depending on your needs. Further along, the ground-floor bathroom is fitted with a sleek bathtub and overhead shower, a wall-mounted basin, a WC, and a chrome heated towel rail, all finished in a contemporary style. Opposite, a well-proportioned ground-floor bedroom benefits from its own en suite shower room, complete with a floating WC, a wall-mounted sink, and a glass-enclosed shower.

The heart of the home is the impressive open-plan kitchen, dining, and living space. A stunning vaulted ceiling and











expansive bi-fold doors allow natural light to flood in, creating a seamless connection to the garden. The stylish kitchen is finished with deep navy cabinetry, luxurious quartz worktops, and high-end integrated appliances, including an induction hob, wine fridge, fridge-freezer, dishwasher, oven, and microwave. A separate utility room provides additional storage and space for laundry appliances.

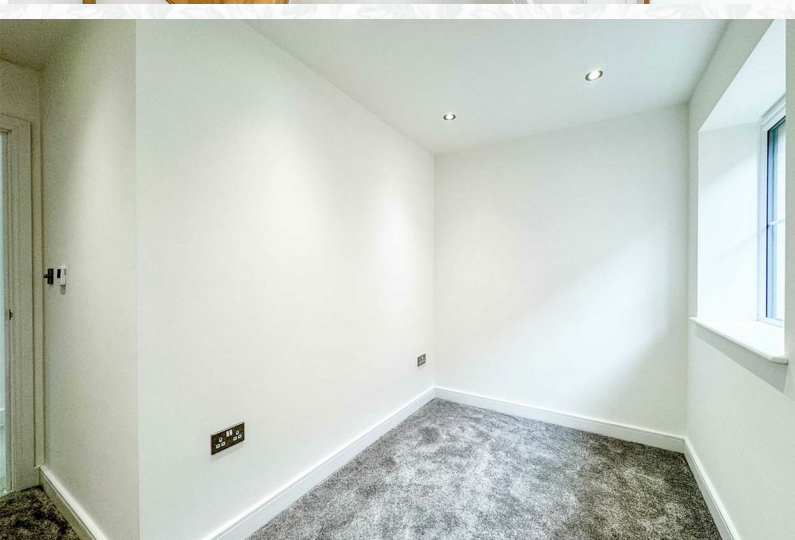
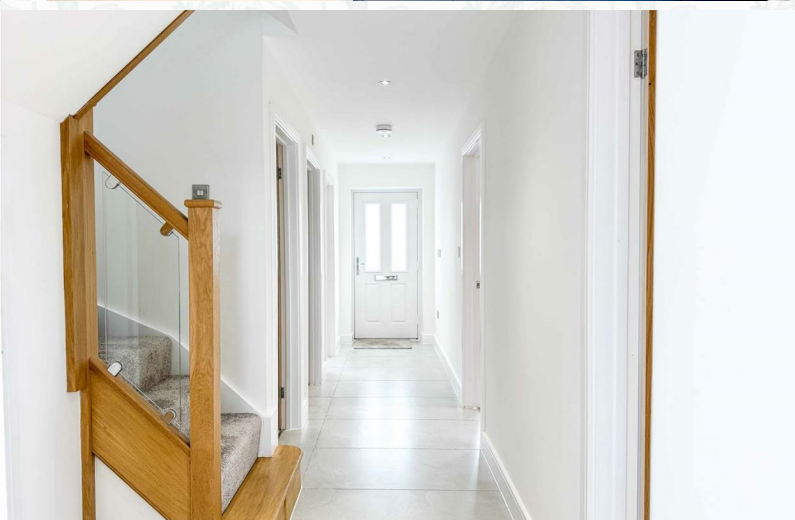
Upstairs, the landing is bright and airy, thanks to a Velux window, adding to











the sense of space. The master bedroom is generously sized and designed with comfort in mind, featuring ample storage. The en suite is finished to a high standard with a rainfall shower, a floating WC with built-in storage, a wall-mounted sink, and a chrome heated towel rail, all complemented by sleek tiling.

The outdoor space has been designed for both relaxation and practicality. The landscaped rear garden features a spacious patio with sleeper-edged

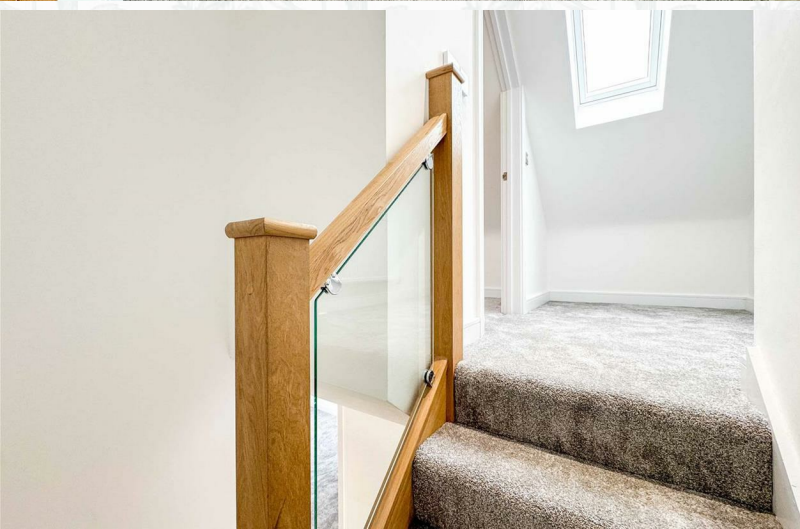




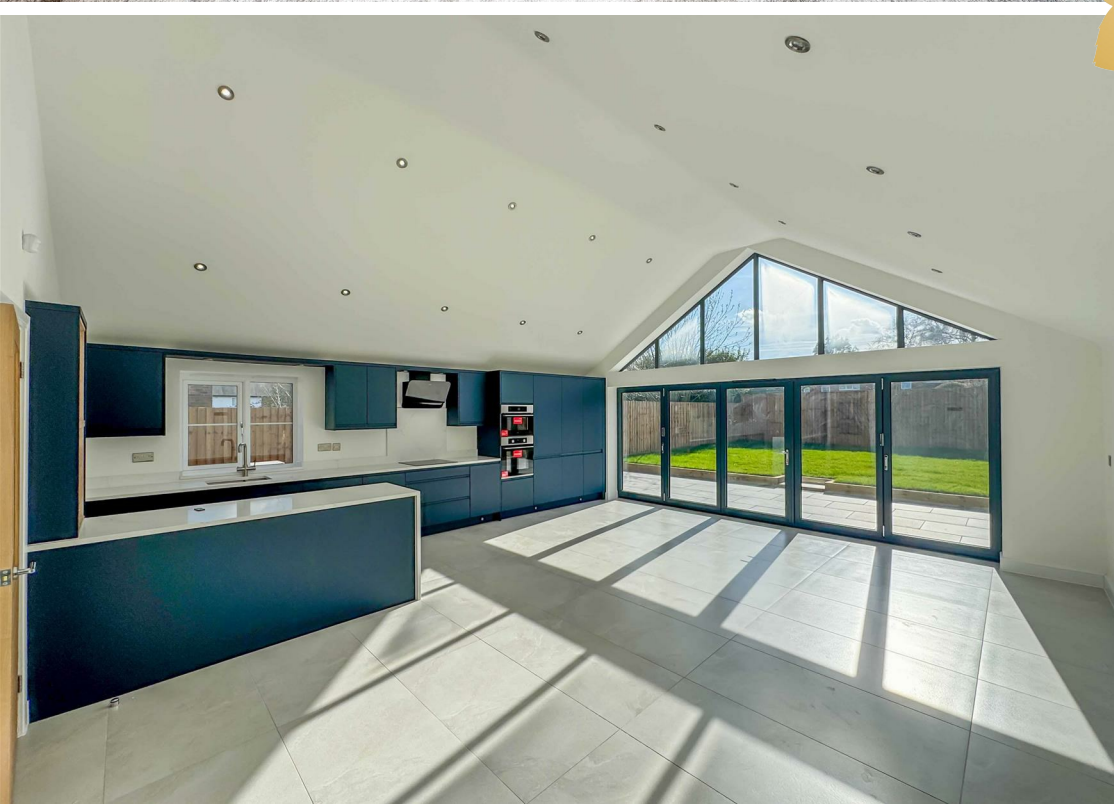




steps leading to a lawn, all enclosed by brand-new fencing for privacy. There is also additional patio space to the side, providing extra room for outdoor seating or storage. At the front, a block-paved driveway offers ample parking for multiple vehicles. Located in the highly desirable village of Mountsorrel, this home is within easy reach of local amenities, excellent schools, and transport links, making it ideal for those seeking a balance of convenience and tranquility. To truly appreciate all that this home has to offer, contact Rezone Estate Agents today to arrange a viewing.











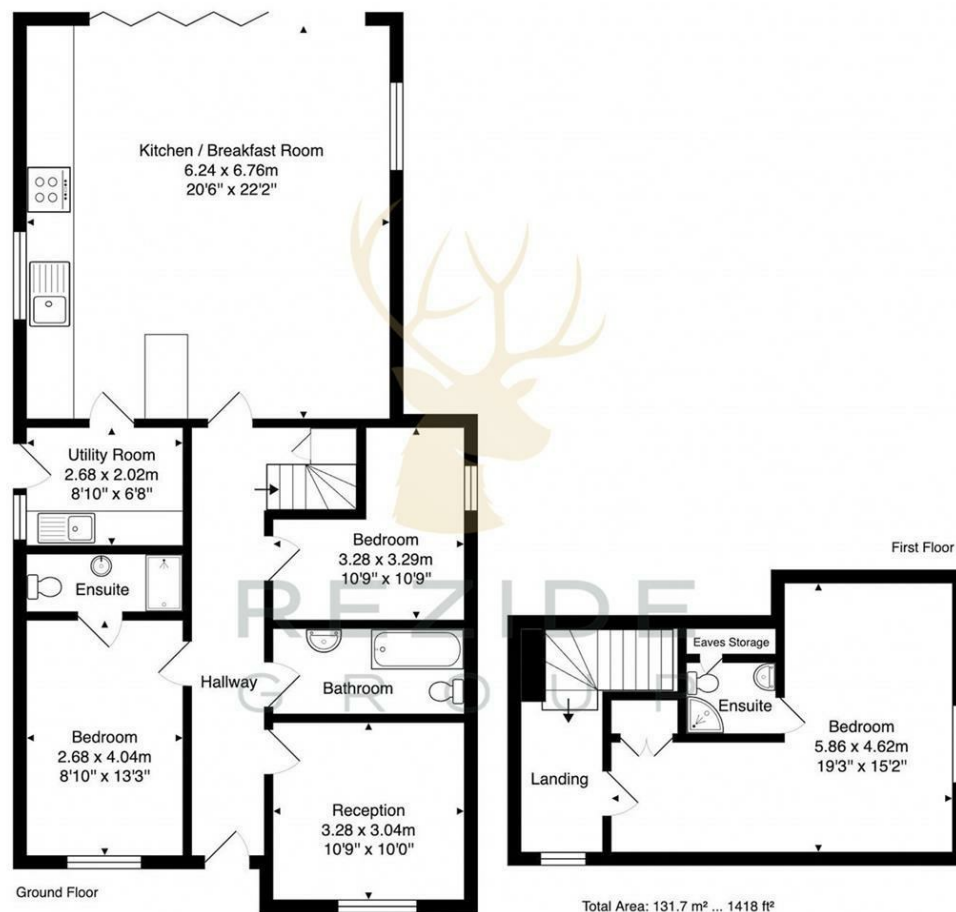






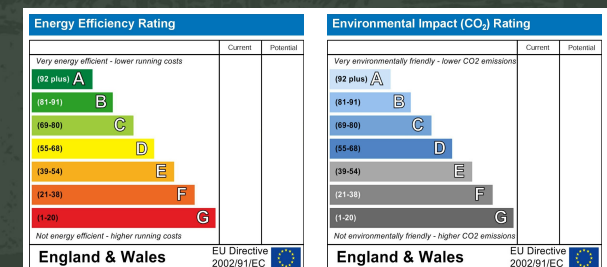






## KEY FEATURES:

- FOR SALE WITH NO UPWARD CHAIN
- THREE BEDROOMS AND STUDY/ DRESSING ROOM
- MODERN LUXURY LIVING
- HUGE OPEN PLAN KITCHEN DINER
- DUAL BI-FOLD DOORS INTO GARDEN
- FANTASTIC FOR ALL AGES
- TWO EN-SUITES AND FAMILY BATHROOM
- AIR SOURCE HEAT PUMP
- CUL-DE-SAC LOCATION
- EPC - C



House - Detached

Scan to book your valuation!

