



REZIDE
GROUP

HOTON ROAD, WYMESWOLD,
ASKING PRICE £375,000



Rezide are delighted to introduce this stunning, extended three-bedroom detached family home in the highly desirable village of Wymeswold. This charming property boasts a spacious open-plan kitchen and dining area, a beautiful lounge complete with a roaring log burner, and stunning views of the surrounding countryside. Additional features include an ensuite shower room, a downstairs WC, ample storage, off-road parking, and a garage. This home is perfect for a young family seeking a rural retreat filled with character and charm.



Upon approach, you will notice the beautifully maintained front garden, filled with established shrubs and trees, which enhances the home's curb appeal. The striking oak-framed porch sets this home apart from others on the row. Stepping inside, you are welcomed by an entrance hall, ideal for hanging coats and storing shoes, with an additional storage area on the left, forming part of the building's extension. The entrance hall also leads to a tastefully decorated downstairs WC, featuring a small corner wash basin and toilet.

Moving through one of the elegant oak doors, you enter the spacious lounge. The current owners have created a cozy and inviting atmosphere with stylish decor. A large front-facing window provides stunning views and, being set back from the main road, ensures privacy. The focal point of this room is the log burner, perfect for creating a warm and inviting space during the colder months. From the lounge, you seamlessly transition into the open-plan kitchen and dining area.







This space has been carefully designed with both aesthetics and functionality in mind. Beautiful wooden flooring runs throughout the ground floor, complementing the cream cabinetry and sage-colored feature walls. Wood-effect work surfaces and carefully chosen tiling contribute to a charming country-home feel. Large windows and a conservatory allow natural light to flood the space, creating a bright and airy atmosphere. The kitchen is fitted with an integrated dishwasher and a stunning range oven, making it as practical as it is stylish. The dining area comfortably accommodates six people, with the option to extend into the conservatory for larger gatherings. The conservatory is currently arranged as a soft-seating area, offering another delightful space to relax and take in the garden views.

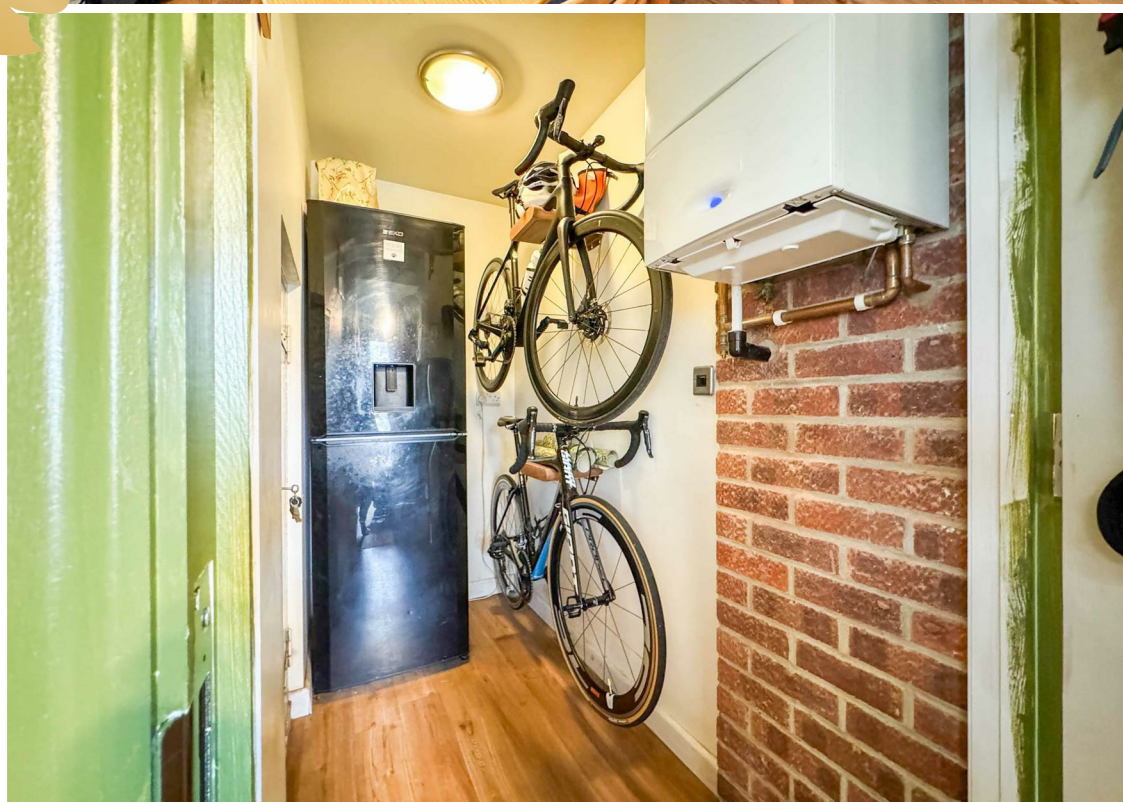






Leading off from the kitchen is a corridor that provides access to the back door and a small utility space. This hallway also includes a generous storage cupboard and access to the under-stairs cupboard. This practical corridor is especially beneficial for families and pet owners, providing a convenient space to clean muddy shoes and paws before entering the main living areas.

Upstairs, you will find three well-appointed bedrooms. The master bedroom is a serene retreat, featuring a large panoramic window overlooking the rear garden. Soft, plush carpeting, tasteful decor, and a sliding door leading to the ensuite shower room add to its appeal. The ensuite is elegantly finished with floor-to-ceiling white subway tiles, a glass sliding-door shower cubicle, a hand wash basin, a toilet, and a heated towel rail.

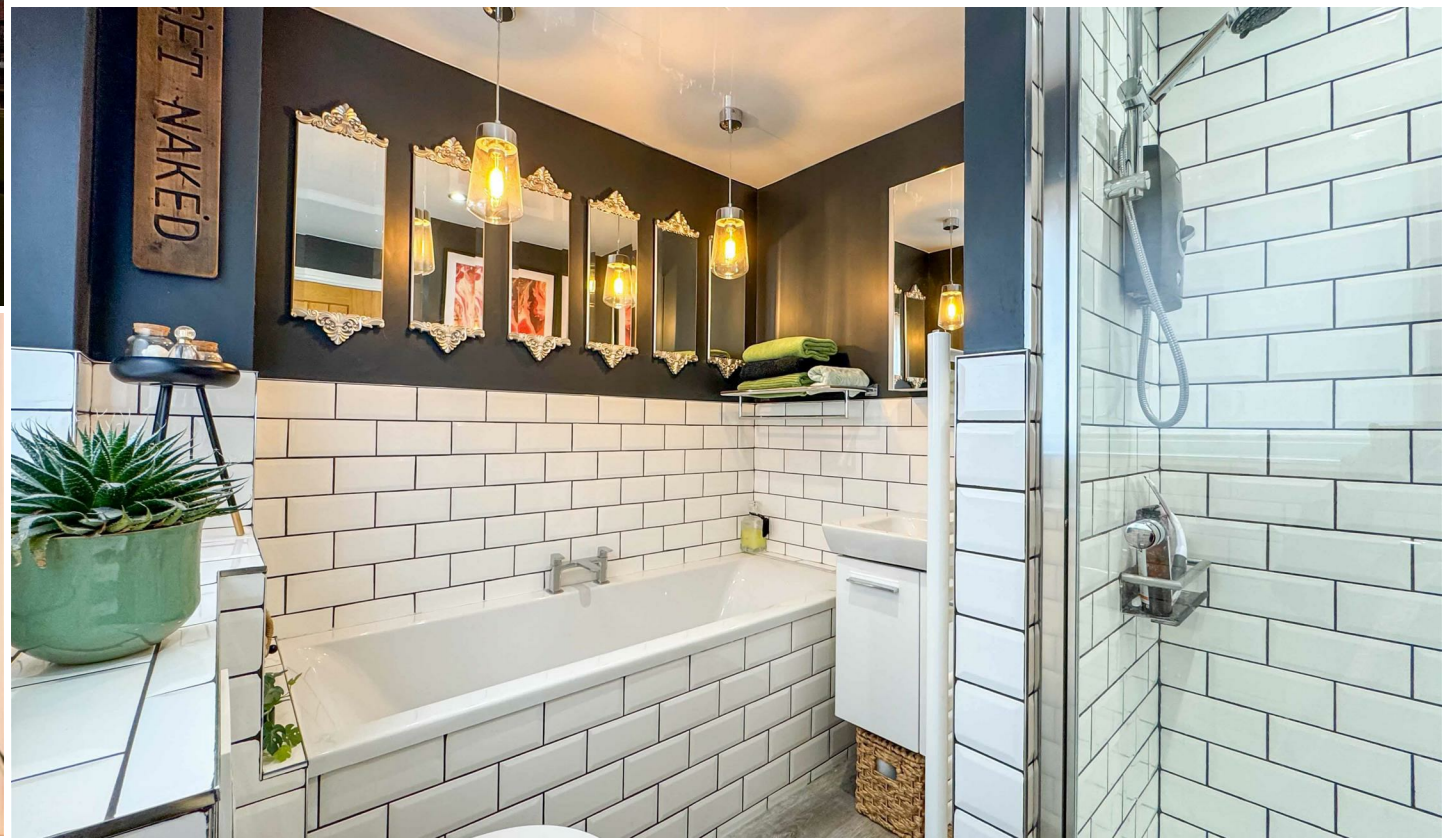
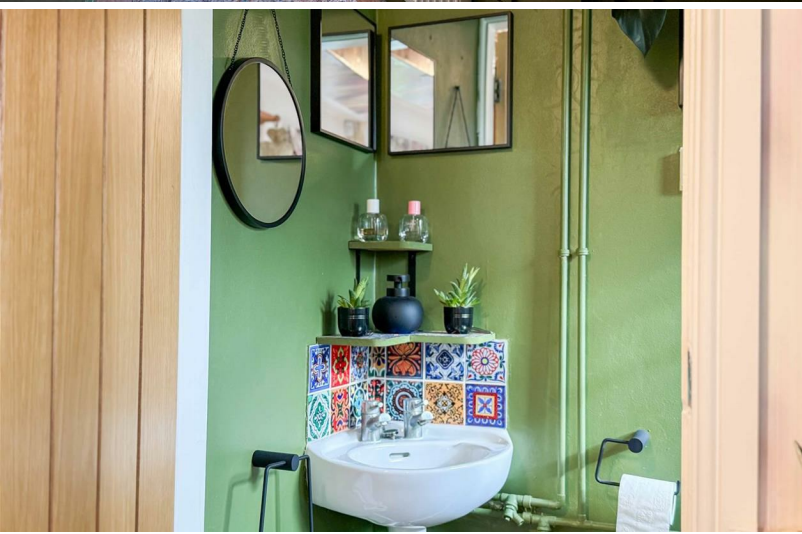




The second bedroom is a generously sized double room with views over the front of the property and the surrounding countryside. High-quality laminate flooring and stylish decor enhance the space, which easily accommodates a king-size bed along with additional furniture. The third bedroom, currently used as a home office, would also make an excellent snug double bedroom, dressing room, or nursery.

The family bathroom has been tastefully decorated in a striking navy blue, complemented by floor-to-ceiling white tiles. This well-appointed space includes a four-piece suite, comprising a toilet, a vanity basin unit, a tiled bath with a side-mounted tap, and a separate shower cubicle with a glass door and an electric shower.

Outside, the beautifully landscaped rear garden provides a private oasis, featuring various seating areas perfect for entertaining or relaxing. A back gate offers convenient access to an alleyway leading to the property's designated parking area and single garage. This stunning home seamlessly combines countryside charm with modern living, making it an ideal choice for those seeking a warm and welcoming family residence.





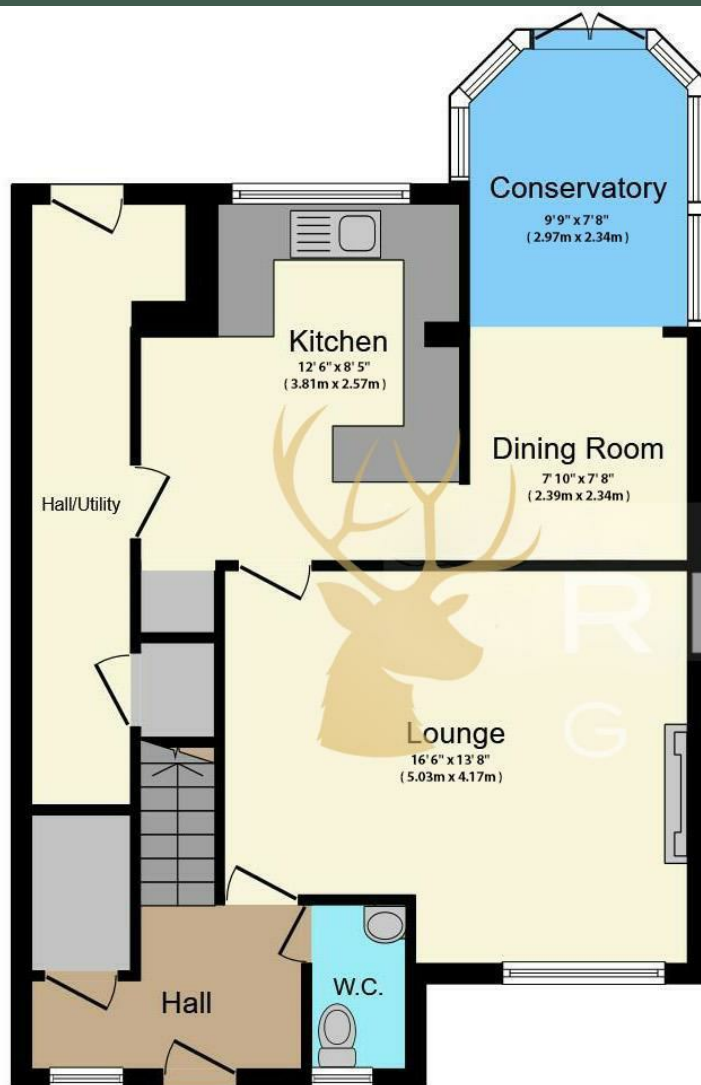












Ground Floor



First Floor

