



REZIDE
GROUP



PRICE GUIDE £239,950
STEVENS ROAD, SILEBY



Rezide is pleased to offer to the market this charming two-bedroom mid-townhouse in the highly sought-after village of Sileby in Charnwood. Situated on the edge of a small-scale Davidson development, this modern home boasts a picturesque location with green space to the front and benefits from off-road parking and a low-maintenance garden to the rear.



Enter the home via a composite glazed door into the welcoming entrance hallway, where you are greeted by stairs rising to the first floor and access to the lounge at the front of the property. The lounge features carpeted flooring, a large window with views over the front green space, an under-stairs storage cupboard, and access to an inner lobby. The inner lobby provides access to a convenient downstairs WC and leads into the well-appointed kitchen diner. The kitchen is fitted with a range of wall and base-level storage units, plumbing for a washing machine, an integrated oven and hob, a stainless steel sink and drainer unit, and space for a fridge freezer. The tiled flooring and French doors opening to the rear garden enhance the kitchen's appeal.

Upstairs, you will find two generous double bedrooms, one at the front and one at the rear of the property, each offering delightful







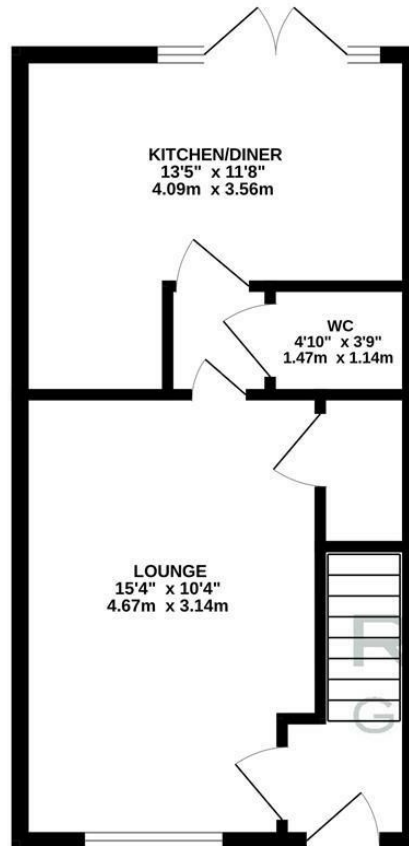
views over the garden and the green space, respectively. The bathroom is stylishly fitted with a bath and shower, a low flush WC, a pedestal wash basin, and is fully tiled from floor to ceiling.

The property further benefits from off-road parking to the front and a low-maintenance rear garden featuring a patio and a laid lawn, making it an ideal space for entertaining and providing a blank canvas for you to create your dream garden. This delightful home in Sileby offers the perfect blend of modern living in a tranquil village setting, ideal for first-time buyers, young families, or those looking to downsize.

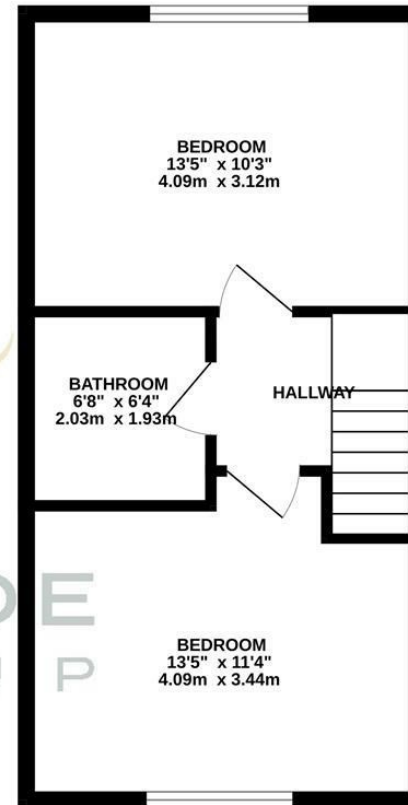








REZIDE
GROUP



TOTAL FLOOR AREA : 723 sq.ft. (67.2 sq.m.) approx.

Whilst every attempt has been made to ensure the accuracy of the floorplan contained here, measurements of doors, windows, rooms and any other items are approximate and no responsibility is taken for any error, omission or mis-statement. This plan is for illustrative purposes only and should be used as such by any prospective purchaser. The services, systems and appliances shown have not been tested and no guarantee as to their operability or efficiency can be given.

Made with Metropix ©2024

