



OFFERS OVER £425,000
GRANGE DRIVE, BURTON ON THE WOLDS





Situated on a modern William Davis development at the edge of the highly sought-after village of Burton On The Wolds, this executive four-bedroom detached family home offers an ideal blend of contemporary living within a beautiful Wolds village. Known as The Solent, this property boasts a practical layout designed to accommodate modern family life.



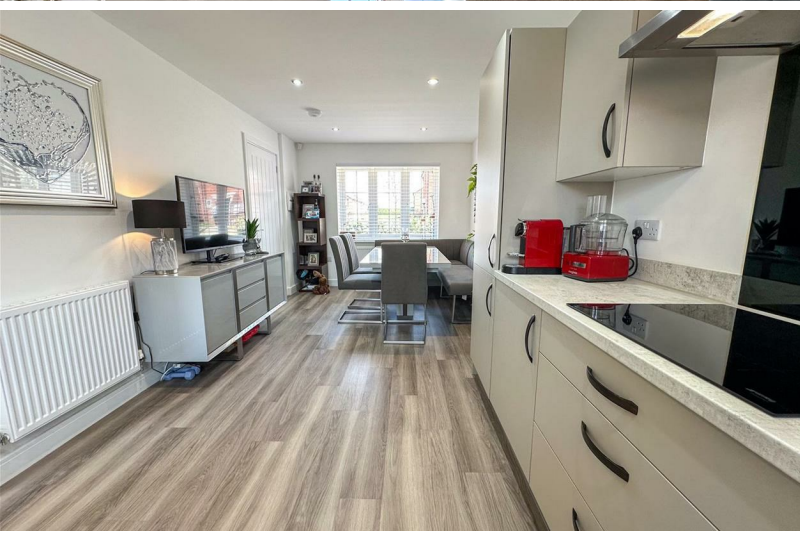
The ground floor features a convenient utility room, a welcoming hall, and a cloakroom, all leading to a combined kitchen and family dining area. This space is perfect for family gatherings and meals, while the separate lounge provides a cozy retreat. The lounge is enhanced by French doors that open to a beautiful private garden, inviting fresh air into the home and offering a perfect spot for outdoor relaxation.





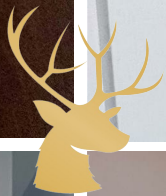


Upstairs, the home offers three well-proportioned bedrooms that share a family bathroom, complete with a bathtub. The principal bedroom is a highlight, offering a spacious en-suite shower room and a built-in wardrobe, creating a private sanctuary for relaxation. With a total of four bedrooms, the property provides flexibility, including the option to convert one of the rooms into a home office, ideal for remote work or personal projects.





The property is set back from the road, providing privacy and a sense of space, complemented by a green area at the front. It also includes off-road parking to the side, along with access to a single garage, offering convenience and additional storage. The generous garden is designed for easy maintenance, featuring a laid lawn and a patio area, perfect for entertaining family and friends. This home not only offers a practical and stylish living space but also a desirable location within a vibrant community.





REZIDE
GROUP



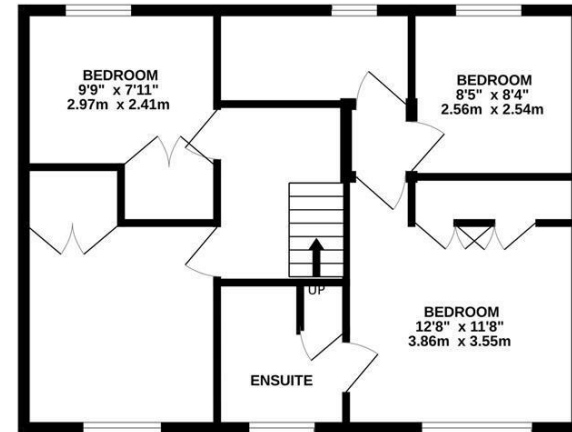
PLOT PLAN FOR GUIDANCE ONLY



GROUND FLOOR
752 sq.ft. (69.9 sq.m.) approx.



1ST FLOOR
574 sq.ft. (53.4 sq.m.) approx.



TOTAL FLOOR AREA : 1327 sq.ft. (123.3 sq.m.) approx.

Whilst every attempt has been made to ensure the accuracy of the floorplan contained here, measurements of doors, windows, rooms and any other items are approximate and no responsibility is taken for any error, omission or mis-statement. This plan is for illustrative purposes only and should be used as such by any prospective purchaser. The services, systems and appliances shown have not been tested and no guarantee as to their operability or efficiency can be given.
Made with Metropix ©2024

