



REZIDE
GROUP

ASKING PRICE £190,000
THE ROMANS, MOUNTSORREL, LOUGHBOROUGH



Rezide estate agents is delighted to introduce this beautifully presented two-bedroom mid-row terrace property on The Romans in Mountsorrel. This stunning home features landscaped front and rear gardens, a modern galley kitchen, a spacious lounge with French doors, a spiral staircase, two double bedrooms, and a stylish bathroom. The property boasts contemporary finishes, ample natural light, and high-quality fittings, making it an excellent first home or investment property. With easy access to Loughborough and Leicester City Centre via the A6, and a variety of new local amenities including restaurants, pubs, and scenic routes along the River Soar, this home offers a perfect blend of comfort and convenience. To find out more, please contact the office on 015092744.

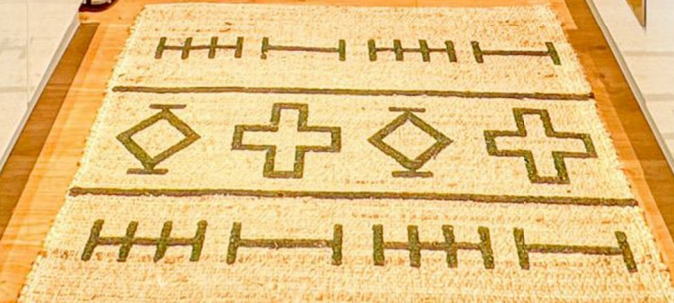


As you approach the property, you will notice the landscaped front garden with path edging and decorative gravel. A contemporary composite front door leads into a small porch before moving through into the main entrance hall.

The modern galley kitchen features wood-effect work surfaces on both sides, white units with silver handles, contemporary tiling, wood-effect flooring, an integral fridge freezer, an integral oven with a gas hob and extractor, and space for a washing machine. There is a window overlooking the front of the property and LED lighting in the ceiling. Moving through into the spacious lounge, you'll find the same wood-effect flooring, ample space for seating and dining, and additional furniture. French doors and two large windows flood the room with natural light and provide access to the delightful rear garden. A spiral staircase in the lounge leads upstairs.

Leading off from the landing upstairs, you'll find the master bedroom, which features lush carpets, a generous-sized window allowing plenty of



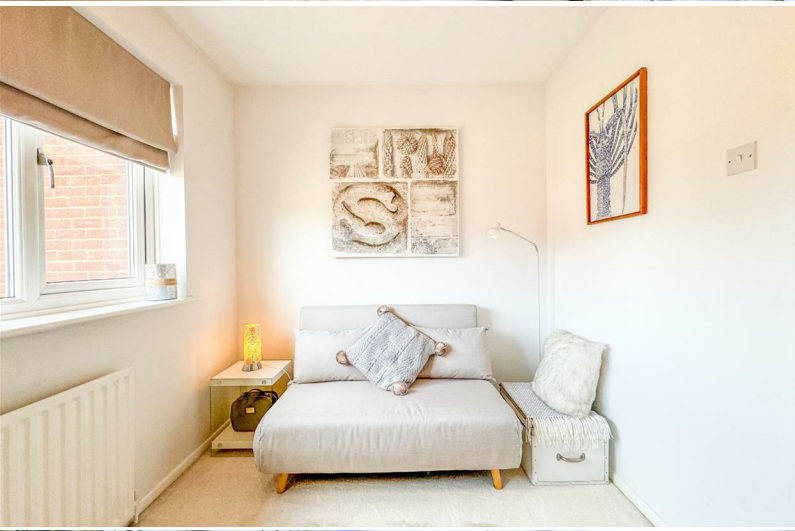




natural light, tasteful wall coverings, and a high-quality fitted wardrobe with sliding doors. The bathroom is a neutral space with white subway brick-effect tiling and a modern three-piece suite, including a bath, pedestal basin, and shower with a folding glass shower screen. Bedroom number two is a double bedroom with the same lush carpets and a window overlooking the front of the property, along with additional storage.

Outside, the rear of the property features a final landscaped garden with a spacious patio seating area and a raised deck area for additional seating. The rest of the garden has been gravelled for easy maintenance. There is also a gate at the end of the garden leading to access via an alleyway to the road.

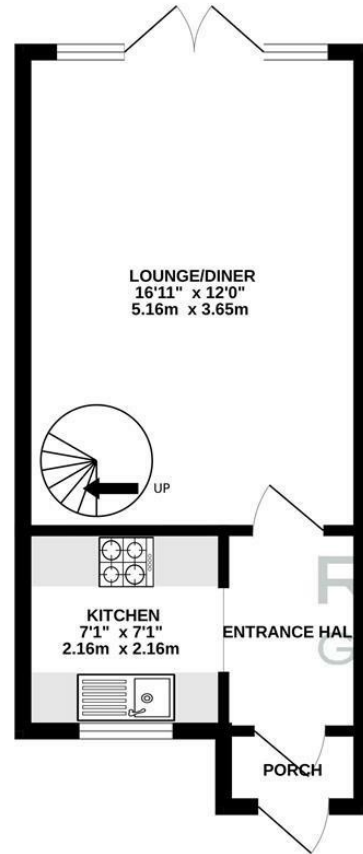




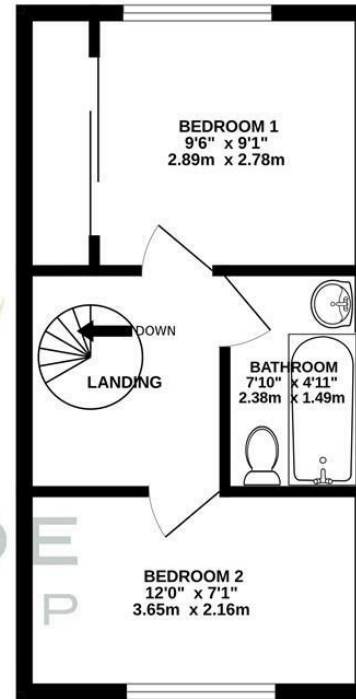
Mountsorrel is a vibrant place to live, with lots of exciting new businesses and amenities joining the village, including a Michelin-star restaurant, various pubs including a wine bar, and beautiful scenic routes in the surrounding countryside and along the idyllic River Soar. In terms of access, the A6 provides easy access to Loughborough or Leicester City Centre, and the property itself is a short walk away from the main road, where you can catch the bus as well. This beautifully presented two-bedroom mid-row terrace on The Romans in Mountsorrel offers a perfect blend of comfort and modern living. With its landscaped gardens, contemporary interiors, and convenient location close to local amenities and transport links, it is an ideal first home or investment property. For more information, please contact Rezide estate agents on 015092744.



GROUND FLOOR
300 sq.ft. (27.9 sq.m.) approx.



1ST FLOOR
287 sq.ft. (26.7 sq.m.) approx.



RESIDE
GROUP

TOTAL FLOOR AREA - 587 sq.ft. (54.6 sq.m.) approx.

Whilst every attempt has been made to ensure the accuracy of the floorplan contained here, measurements of doors, windows, rooms and any other items are approximate and no responsibility is taken for any error, omission or mis-statement. This plan is for illustrative purposes only and should be used as such by any prospective purchaser. The services, systems and appliances shown have not been tested and no guarantee as to their operability or efficiency can be given.
Made with Metropix ©2024

