



REZIDE
GROUP



APPLE TREE WAY, BARROW UPON
ASKING PRICE £625,000



REZIDE Estate Agents is pleased to present this impressive five-bedroom, three-bathroom detached family home, now available on the market. Nestled in a prime spot within this highly sought-after development in the desirable village of Barrow upon Soar, this property offers an ideal blend of luxury and practicality. The property has been meticulously upgraded and decorated this home to an exceptional standard, featuring a high-specification kitchen and utility room, luxury carpets, and stylish tiled flooring throughout. All bathrooms boast upgraded tiling, and four of the bedrooms include fitted wardrobes. The exterior of the property is equally impressive, with landscaped gardens that include a large sheltered patio area, perfect for entertaining. The private driveway accommodates up to four cars and leads to a double garage.



As you approach this remarkable property, its striking double-fronted symmetry immediately catches your eye. Overlooking a beautiful green space, this home occupies one of the finest plots in the estate. Entering through the front door, you're greeted by a bright and inviting entrance hall featuring elegant tiled flooring and tasteful wallpaper. There's convenient storage space under the staircase. From the entrance hall, you can access the lounge to the right, the downstairs WC also to the right, and the kitchen/diner straight ahead.

The kitchen/diner is a fantastic space, accommodating a large dining table and soft seating, creating a true living kitchen. The upgraded kitchen boasts luxury units, glossy work surfaces, and a range of integrated appliances, including a dishwasher, fridge





KEEP CALM AND KISS ME

I'M NOT BOSSY, I JUST HAVE BETTER IDEAS



BREAD



freezer, double oven, and gas hob. The kitchen also features a grey brick tile effect backsplash, LED lighting, and a breakfast bar for informal dining. A bay window with upgraded shutters, high-quality tiled flooring, and French doors leading to the patio area enhance this space.

The lounge is a generous-sized room with plush carpets, tastefully decorated walls, a stunning fireplace, a bay window overlooking the front of the property, and contemporary light fittings. Reception room number two, also accessible from the entrance hall, is a versatile space ideal for a second sitting room, large office, or







family room. This room also features plush carpets and a bay window with a view of the front garden.

Heading upstairs, you find the master suite directly in front of you. This luxurious space includes a walk-through dressing area leading to the main bedroom, which features aspect windows with shutters, contemporary light fittings, luxury wall coverings, and access to the master ensuite. The ensuite bathroom is upgraded with luxury tiles, a chrome heated towel rail, a glass shower cubicle, a pedestal basin, and a toilet. Bedroom two also offers high-end finishes, a walk-in wardrobe, and its own ensuite shower room. The family bathroom, upgraded with premium tiles, includes a four-piece suite: a bath with a side-mounted tap, a shower cubicle, a pedestal basin, and a toilet. Bedrooms three, four, and five are equally well-appointed, with luxurious carpets and tastefully decorated walls.

Outside:





The beautifully landscaped garden is perfect for outdoor living, featuring a covered patio area ideal for alfresco dining or entertaining. The current owners have a hot tub situated here. The garden also includes a manicured lawn, various flowerbeds, a decked seating area, and a path leading to the back gate and double garage. The garage, accessible from both inside the garden and through the two garage doors, is equipped with power and lighting, and there is driveway parking for four cars.

Location:

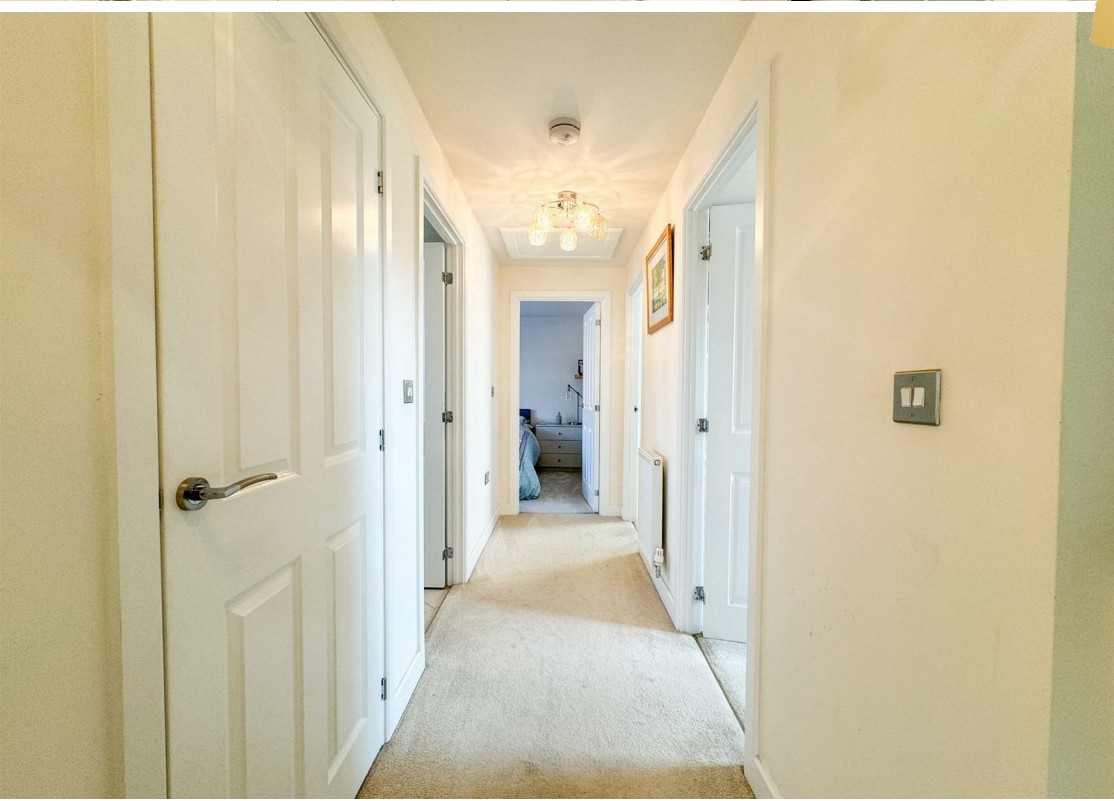
The delightful village of Barrow Upon Soar is highly sought after, offering an abundance of fantastic pubs, restaurants, cafes, and shops. The area also boasts stunning countryside walks along the idyllic River Soar. The property is also close to several well-regarded schools, such as The Loughborough Schools Foundation, Ratcliffe College, Humphrey Perkins, and Rawlins Academy. Excellent road links via the A6, A46, and M1 Motorway provide easy access to Loughborough, Leicester, Nottingham, and Derby.

To find out more about this exceptional property, please contact Rezone Estate Agents on (01509) 274474.

















Ground



First

