



REZIDE
GROUP



WENTWORTH AVENUE, ELMESTHORPE,
OFFERS OVER £525,000

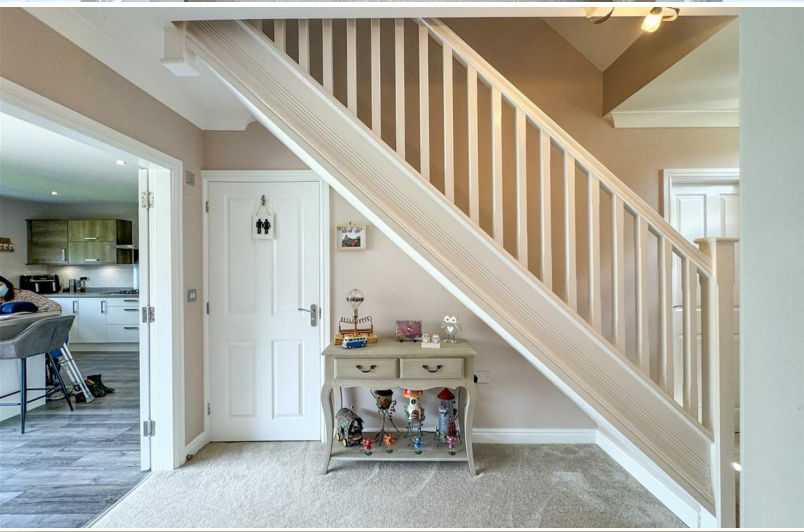
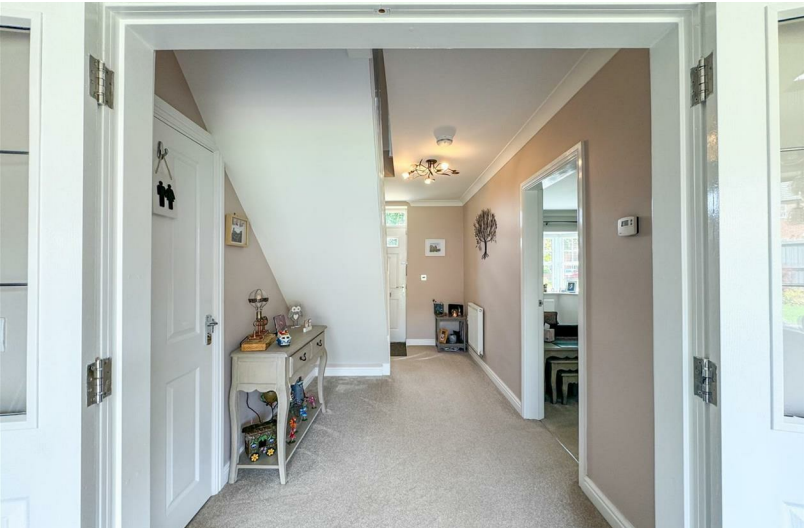


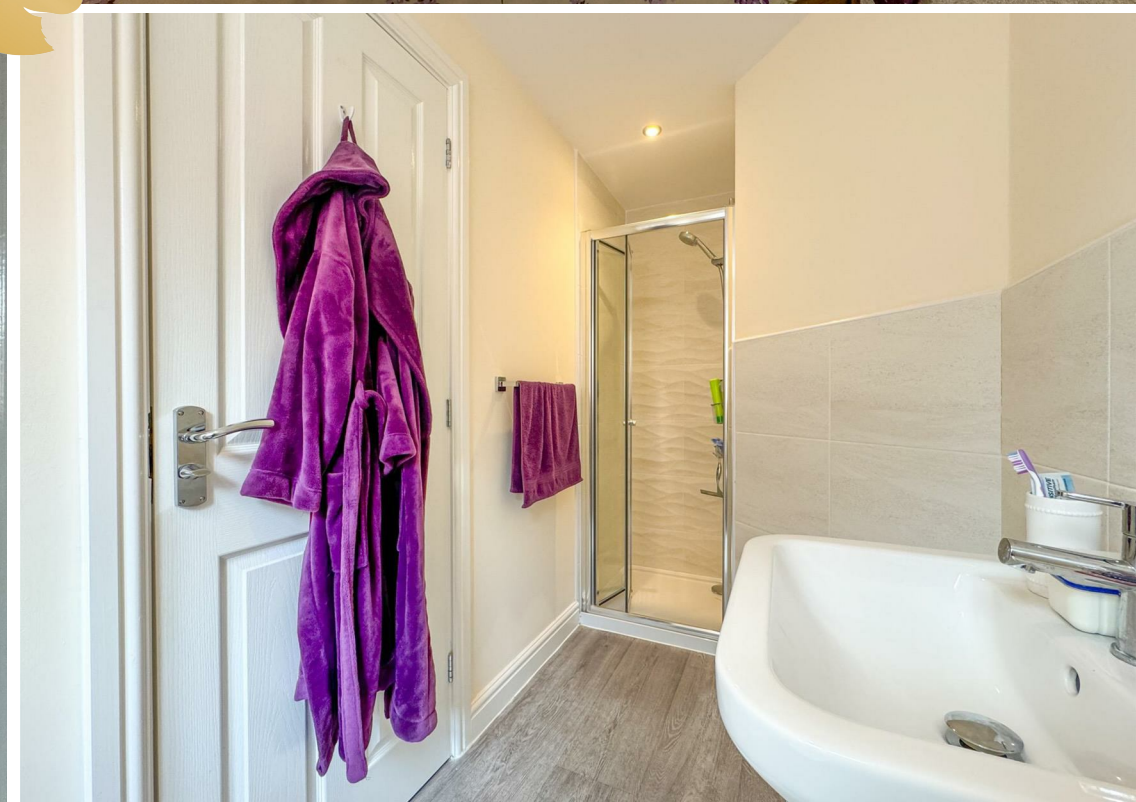
Rezide Estate Agents is delighted to present this impressive five-bedroom detached family home, showcasing a stunning open-plan kitchen diner with bifold doors leading to the garden. This home also features a separate lounge area, a downstairs study, WC, and utility room. Upstairs there is five double bedrooms, two en-suites, a family bathroom and additional shower room on the top floor! Outside there is a generous sized rear garden, parking for several cars and a double garage. To arrange a viewing please call the office on 01509 274474.

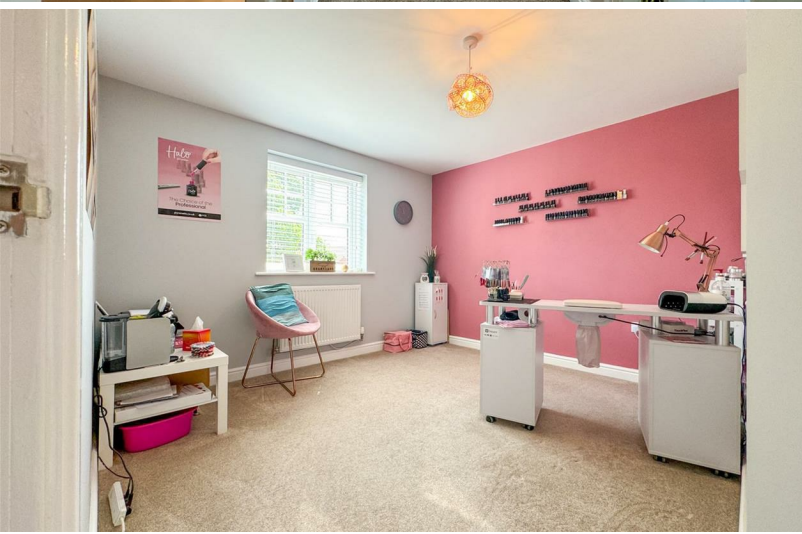
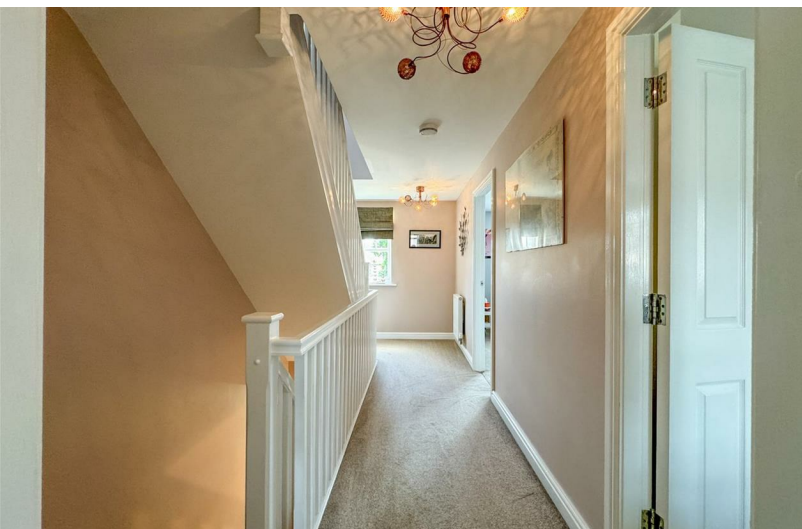
















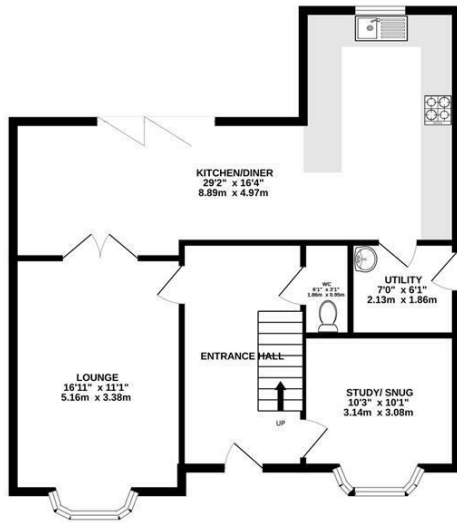




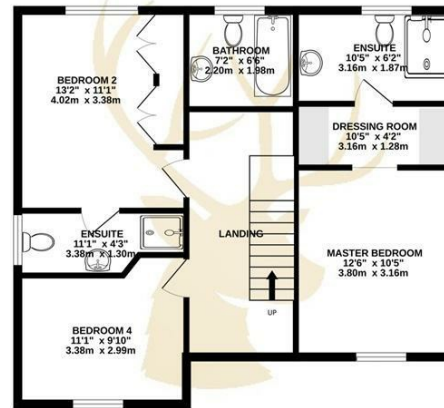
ABA

1

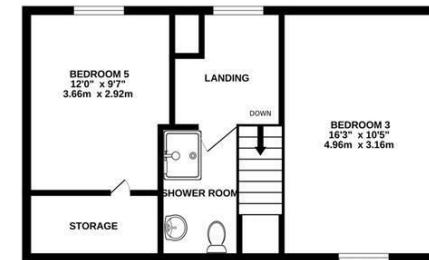
GROUND FLOOR
772 sq.ft. (71.7 sq.m.) approx.



1ST FLOOR
689 sq.ft. (64.0 sq.m.) approx.



2ND FLOOR
443 sq.ft. (41.1 sq.m.) approx.



REZIDE
GROUP

TOTAL FLOOR AREA : 1903 sq.ft. (176.8 sq.m.) approx.

Whilst every attempt has been made to ensure the accuracy of the floorplan contained here, measurements of doors, windows, rooms and any other items are approximate and no responsibility is taken for any error, omission or mis-statement. This plan is for illustrative purposes only and should be used as such by any prospective purchaser. The services, systems and appliances shown have not been tested and no guarantee as to their operability or efficiency can be given.

Made with Metropix ©2024

